



**Crawley**  
**Crime & Disorder**  
**Reduction Partnership**

# **COMMUNITY SAFETY PARTNERSHIP PLAN 2008-2011**

## **FIRST YEAR SUMMARY REVIEW APRIL 2008 - MARCH 2009**

## CRAWLEY COMMUNITY SAFETY PARTNERSHIP PLAN 2008-2011 FIRST YEAR SUMMARY REVIEW - APRIL 2008 TO MARCH 2009

The Crawley Community Safety Partnership Plan 2008-2011 aims to make Crawley and Gatwick Airport safer places. The Plan has eight priorities to tackle crime, disorder and anti-social behaviour and is produced and published by the Crawley Crime and Disorder Reduction Partnership (CDRP). The eight priorities are to:

1. Reduce alcohol and drug-related crime, particularly public place violence and vandalism
2. Reduce acquisitive crimes of most concern to local communities, including burglary, robbery, vehicle crime and crime against businesses
3. Reduce the re-offending of those who commit the most crime or cause the most harm
4. Reduce fear of crime and promote public confidence
5. Support children and young people to feel and stay safe
6. Tackle anti-social behaviour (ASB), particularly involving young people
7. Tackle domestic abuse, serious sexual offences and hate crime
8. Reduce road traffic deaths and serious injuries.

The Crawley CDRP comprises Crawley Borough Council, Sussex Police, West Sussex County Council, West Sussex Fire and Rescue Service, Sussex Police Authority and West Sussex Primary Care Trust. It also includes other organisations in the public, private, voluntary and community sectors. This summary review covers the period April 2008 to March 2009, and describes the many activities and initiatives that the CDRP undertook in order to achieve its priorities and objectives and to make Crawley a safer place for all.

During the year, overall recorded crime in Crawley, including Gatwick Airport, went down 8% from 12,083 offences to 11,155, a reduction of 928 crimes. Vehicle crime went down 6%; criminal damage went down 10%; fires started deliberately went down 11%; violent crime overall went down 14%; public place violent crime went down 22% and racist incidents went down 29%. However, domestic burglary went up 2.5% from 276 to 283 offences and reported domestic violence incidents went up 21% from 1,293 to 1,562.\*

Table 1 contains the crime figures for Crawley and Gatwick Airport (the Crawley CDRP area) for the years April 2007 to March 2008 and April 2008 to March 2009.

**Table 1**

Crawley and Gatwick Airport	07/08	08/09	% diff	Target
Overall Crime	12,083	11,155	-7.68	-5%
Domestic Burglary	276	283	+2.5	-5%
Vehicle Crime	1,128	1,059	-6.1	-6%
Criminal Damage	1,790	1,608	-10.16	-5%
Violent Crime	2,502	2,151	-14	-10%
Public Place Violent Crime	1,619	1,264	-21.9	n/a
Deliberate Fires	213	189	-11.2	n/a
Domestic Violence	1,293	1,562	+20.8	n/a
Racist Incidents	140	99	-29.2	n/a

\*All percentage figures have been rounded up to the nearest whole decimal point.

Between April 2008 and March 2009, there were a total of 8,674 crimes recorded by police in Crawley (excluding Gatwick Airport). These recorded crimes have been broken down by type and ward, as shown in Table 2. It can be seen that 'Theft Other' offences comprise the greatest single proportion of crimes by type (31%) followed by Violent Crime (19%) and Criminal Damage (17%). By ward, Northgate comprises more than twice the number of recorded crimes than any other ward - 2,185 in number and 25% of the total. Northgate ward covers the bulk of the town centre and includes the Crawley Police Station.

**Table 2**

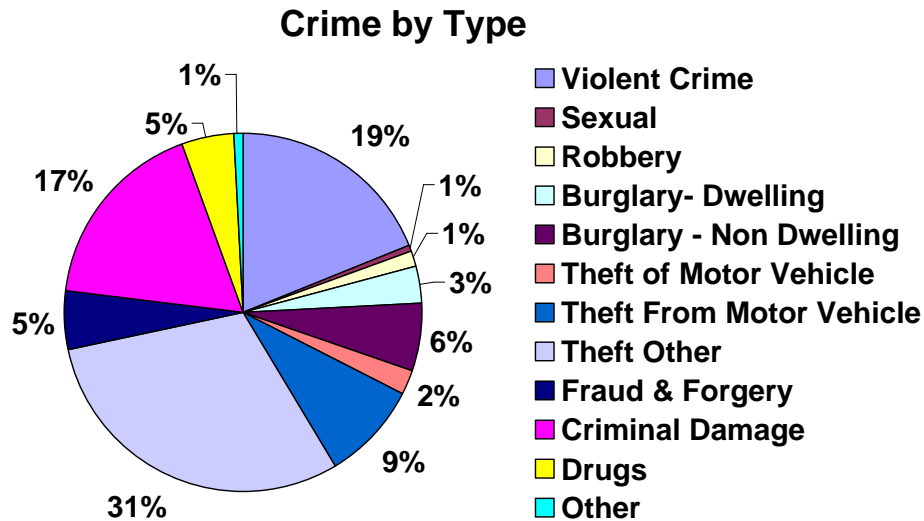


Table 3, shows the breakdown of recorded crimes in Crawley by ward during 2008/09

**Table 3**

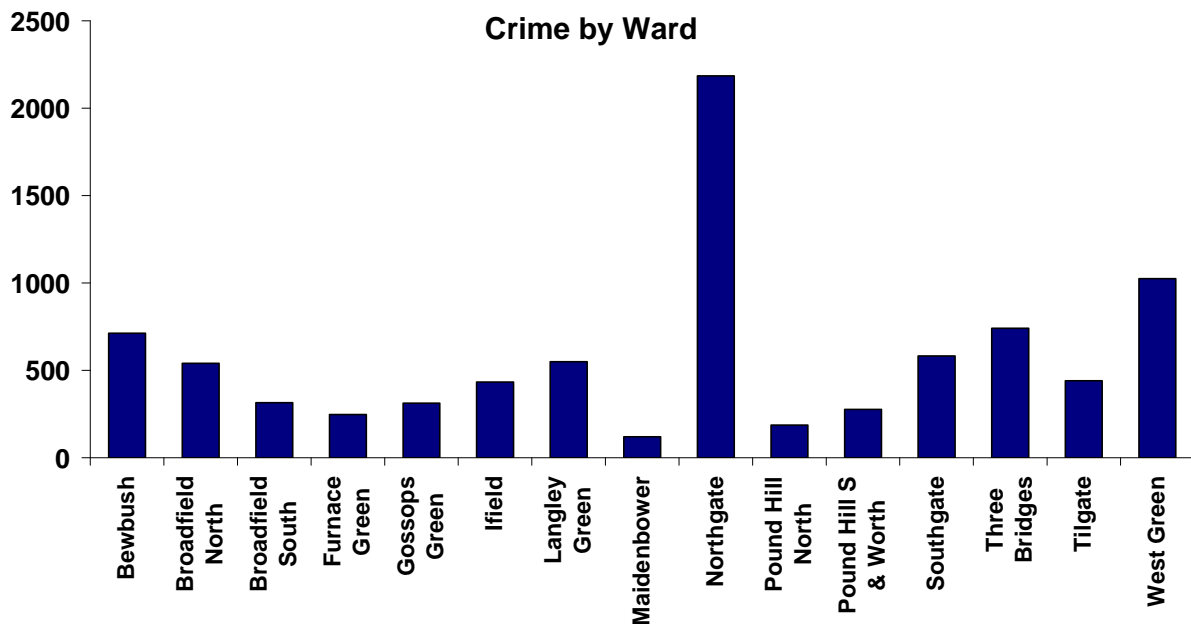


Table 4 shows the comparison of All Crime by type between 07/08 and 08/09. 'Other' offences show the greatest percentage decrease of 28% or 25 crimes. Criminal damage shows the greatest decrease of actual number of crimes, down by 203 (12%). Theft Other shows the greatest rise in actual number of crimes, up by 109 offences (4%); the percentage value being low as a result of the high number of offences in the category. Robbery shows the greatest increase by percentage at 18%, up 17 crimes.

**Table 4**

All Crime by Type	08/09	As % of 08/09 Total	07/08	As % of 07/08 Total	Actual Difference 08/09 to 07/08	Percentage Difference 08/09 to 07/08
Violent Crime	1603	18%	1802	20%	-199	-11%
Sexual	104	1%	89	1%	15	17%
Robbery	112	1%	95	1%	17	18%
Burglary- Dwelling	280	3%	277	3%	3	1%
Burglary - Non Dwelling	546	6%	575	6%	-29	-5%
Theft of Motor Vehicle	180	2%	211	2%	-31	-15%
Theft From Motor Vehicle	763	9%	777	9%	-14	-2%
Theft Other	2626	30%	2517	28%	109	4%
Fraud & Forgery	469	5%	432	5%	37	9%
Criminal Damage	1515	17%	1718	19%	-203	-12%
Drugs	412	5%	412	5%	0	0%
Other	64	1%	89	1%	-25	-28%
<b>Total</b>	<b>8674</b>	<b>100%</b>	<b>8994</b>	<b>100%</b>	<b>-320</b>	<b>-4%</b>

Table 5 shows the comparison of All Crime by Ward between 2007/08 and 2008/09. Maidenbower shows the greatest percentage decrease at 36% or 67 crimes. Bewbush shows the greatest decrease in actual number of crimes, down by 184 (21%).

Three Bridges shows the greatest rise in actual number of crimes, up 107 offences, a rise of 17%. Furnace Green shows the greatest increase by percentage at 33%, up 61 crimes.

**Table 5**

All Crime by Ward	08/09	As % of 08/09 Total	07/08	As % of 07/08 Total	Actual Difference 08/09 to 07/08	Percentage Difference 08/09 to 07/08
Bewbush	713	8%	897	10%	-184	-21%
Broadfield North	541	6%	546	6%	-5	-1%
Broadfield South	316	4%	396	4%	-80	-20%
Furnace Green	248	3%	187	2%	61	33%
Gossops Green	313	4%	376	4%	-63	-17%
Ifield	433	5%	517	6%	-84	-16%
Langley Green	550	6%	561	6%	-11	-2%
Maidenbower	121	1%	188	2%	-67	-36%
Northgate	2185	25%	2138	24%	47	2%
Pound Hill North	187	2%	198	2%	-11	-6%
Pound Hill S & Worth	277	3%	299	3%	-22	-7%
Southgate	583	7%	628	7%	-45	-7%
Three Bridges	741	9%	634	7%	107	17%
Tilgate	441	5%	452	5%	-11	-2%
West Green	1025	12%	977	11%	48	5%
<b>Total</b>	<b>8674</b>	<b>100%</b>	<b>8994</b>	<b>100%</b>	<b>-320</b>	<b>-4%</b>

To achieve these reductions and improvements, the Crawley Crime and Disorder Reduction Partnership formed eight action groups to tackle its eight priorities. The following is a summary of the main activities, outputs and outcomes of these action groups.

**Priority 1**  
**Reduce alcohol and drug-related crime, particularly**  
**public place violence and vandalism**

In the last year the partnership:

- Successfully piloted the Crawley Alcohol Arrest Referral Service. CAARS offers advice and treatment (structured brief interventions) to those arrested by police for alcohol-related offences. 907 referrals were made during the year of which 628 related to Crawley residents (the remainder were from Horsham and Mid Sussex). 62% of offences were for violence and vandalism. The scheme has now been rolled out to the rest of West Sussex to incorporate Worthing and Chichester custody centres;
- Carried out test purchase operations in convenience stores, supermarkets and other licensed premises, including at Gatwick Airport, to detect and deter the unlawful sales of alcohol to those under 18 years. Fixed Penalty Notices (FPNs) were issued to those failing the tests;
- Carried out drug testing operations in town centre pubs, clubs and bars to detect the presence of illegal substances and to provide advice to licensees on how best to prevent and deter drug use in their premises;
- Supported the National Tackling Drugs Week to raise people's awareness of the dangers of problem drug taking and of the help and treatment that is available for those who wished to deal with their problem drug taking;
- Carried out visits to licensed premises throughout the town to monitor compliance with the licensing laws and the licensing objectives;
- Increased membership of Crawley Pub Watch. Benefits of membership include access to a dedicated town-wide secure radio system, a database of those banned from pubs or barred by courts from entering licensed premises, and regular support and advice from the police and council on all licensing matters;
- Introduced various identity and age verification schemes to support Pub Watch members in discouraging and deterring underage or excluded persons from entering licensed premises, particularly at weekends;
- Ran a Know Your Limits alcohol campaign over the Christmas period aimed at 18-24 year olds to provide advice on safe, sensible and sociable alcohol consumption, the dangers of drink/driving and advice on safe sex;
- Increased high-visibility police patrols in the town centre on Thursday, Friday and Saturday nights between 8 pm and 4 am to deter and detect alcohol-related violence and vandalism;

- Launched the Priority Alcohol Related Offenders Scheme (PAROS), to monitor and manage ex-offenders in the community whose risk of re-offending was linked to their alcohol consumption;
- Launched the Street Pastors Scheme comprising trained volunteers from local churches providing late night high-visibility patrols in town centre locations to provide support, reassurance and help to patrons of the night-time economy;
- Commissioned Addaction - the alcohol and drug charity – as the primary third sector provider of treatment services in Crawley and West Sussex;
- Appointed two Harm Reduction Advisors at Crawley Hospital to refer those with alcohol and drugs problems into specialist treatment services;
- Did not pursue the Safer Socialising Award as it was felt to be too limiting. Alternative schemes linked to the night time economy will be considered.

**Priority 2**  
**Reduce acquisitive crimes of most concern to local communities, including burglary, robbery, vehicle crime and crime against businesses**

In the last year the partnership:

- Extended the Crawley Crime Diversion Programme - an initiative to keep first-time juvenile shoplifters out of the criminal justice system - to include offences of criminal damage and minor assaults. 107 young people undertook the programme last year of which 87 were shoplifters. The programme now in its sixth year has achieved an overall reoffending rate of 2% for shoplifters and 8% overall. A remarkable example of a project originally piloted in Crawley;
- Used a police 'bait' car equipped with covert tracking equipment to catch and convict persistent and prolific car thieves and installed new street car crime signage and undertook preventative patrols in hotspot crime locations;
- Increased membership of Crawley Shop Watch. Benefits of membership include access to a dedicated town-wide secure radio system, a database of those shoplifters excluded from retail premises because of their offending behaviour or those acting anti-social behaviour;
- Extended the Business Watch radio system to cover the whole of Crawley, enabling members based on neighbourhood parades to use the system;
- Carried out drug raids, made seizures of cannabis, cocaine and other drugs, secured convictions, and confiscated assets from drug dealers;
- Undertook operations at Gatwick Airport to disrupt and detect thefts by employees on airside areas and thefts from passengers on landside areas.

**Priority 3**  
**Reduce the re-offending of those who commit  
the most crime or cause the most harm**

In the last year the partnership:

- Targeted 28 prolific and other priority offenders who were committing the most crime or causing the most harm. As of 31 December 2008, the combined reduction rate in re-offending by this group - as measured across West Sussex was 37% - against a Local Area Agreement (LAA) target of 20%;
- Complied with the PPO Premium Service Protocol to manage offenders;
- Found difficulty in securing accommodation for some ex-offenders, and this remains an issue. The extent of this problem has yet to be fully assessed.

**Priority 4**  
**Reduce fear of crime and promote public confidence**

In the last year the partnership:

- Formed police ward panels in neighbourhood areas to enable local residents to identify their crime and anti-social behaviour prioritises and for the police to report back to the panels on what had been done to tackle them. A maximum of three priorities are tackled at any one time and will often involve the council, particularly where anti-social behaviour is concerned;
- Undertook various crime prevention campaigns and initiatives including a
  - Safer Crawley Weekend in Queens Square
  - Sat Nav marking day at County Oak Retail Park
  - Targeted distribution of leaflets to prevent car crime
  - Letters to residents to raise awareness of garage breakings
  - Road safety messages on Park and Display car park tickets
  - Safety and security information in Council tenants' newsletters.
- Published and printed articles, information and posters in Crawley Live and other publications, including garden shed security, abandoned vehicles, graffiti removal, Crawley and Gatwick Business Watch, services to victims of domestic violence; the Community Wardens Service, road safety, Crimestoppers and FRANK – a confidential drug helpline;
- Produced and distributed Neighbourhood Policing Team newsletters, provided press articles and gave radio interviews;
- Held a public meeting to give Crawley residents and others the opportunity to discuss the issues they wanted community safety partners to prioritise;
- Posted an on-line community safety questionnaire on the Council website;
- Upgraded nearly a third of the town centre and neighbourhood parade CCTV system with the installation of 13 new high resolution replacement cameras providing police monitoring, recording and picture storage on a 24/7 basis;

- Installed two additional cameras to the Crawley CCTV system, bringing the total number being operated by the Council and Sussex Police to 42. Police are also able to view the CCTV cameras installed at County Mall and at Crawley Leisure Park, bringing the total number of cameras accessible to 88 and providing camera coverage across the entire town centre and parts of Memorial Gardens;
- Deployed a mobile CCTV camera at crime hotspot locations across Crawley;
- Utilised the Automatic Number Plate Recognition (ANPR) camera system;
- Installed additional street lighting in identified vulnerable areas in Crawley;
- Introduced the Policing Pledge setting out the services and standards that can be expected of the police working with community safety partners;
- Provided web-based crime mapping and information at the neighbourhood level to enable residents to view the incidents of crime and disorder in their local area and to increase their confidence in the police and the local authorities to tackle crime, disorder and anti-social behaviour;
- Carried out 12 beat surgeries at Gatwick Airport, held six property marking days and held a public consultation meeting in partnership with Gatwick Airport Ltd.

### Priority 5 Support children and young people to feel and stay safe

In the last year the partnership:

- Provided funding to support positive activities for young people in Crawley, including the B-Boyz Project in Bewbush and the Friday Night Football Project;
- Extended the Safer Schools Partnership (SSP) by appointing a Police Community Support Officers (PCSO) to operate full-time in three senior schools in Crawley. The SSP, amongst other things, aims to provide a safe and secure school community, engage young people, challenge unacceptable behaviour, and help pupils to develop a respect for themselves and their community;
- Appointed a PCSO to work in partnership with staff and students at Central Sussex College to promote community cohesion and prevent violent extremism;
- Assigned Police Community Support Officers to liaise with every primary school in Crawley in order to gain the trust and confidence of the children, teachers, parents and governors, and to provide a reassuring and visible presence;
- Undertook outreach work with young people in areas identified as having problems with teenagers hanging about;
- Supported the opening of a youth café in the town centre to enable young people to meet in a safe and sociable environment and where youth workers were on hand to deal with any personal or other issues;

- Held the Crawley Youth Awards to provide the opportunity for young people to present a positive images of themselves and to help counter the often negative images portrayed of them in the press and media;
- Launched a pan-Sussex Anti-Bullying helpline for children and young people, and appointed two county-based caseworkers to provide support and advice;
- Ran an operation at Gatwick Airport with the UK Border Agency to target the illegal trafficking of children and young people.

**Priority 6**  
**Tackle anti-social behaviour, particularly involving young people**

A total of 4,030 Anti-Social Behaviour (ASB) incidents were recorded by police in 2007/08 compared to 4,091 in 2008/09; this represents an increase of 61 incidents, or 1.5%.

Analysis of Table 6 reveals that Bewbush saw the greatest decrease in terms of the actual numbers of incidents, down 142 or 28%. The greatest percentage decrease was in Furnace Green with a reduction of 37%, down 39 incidents, from 106 to 67.

The greatest increase in actual number of recorded incidents was in Pound Hill South and Worth with an additional 75 incidents, up from 115 to 190 or 65%. The greatest percentage increase was in Pound Hill North, at 75%, a rise from 96 to 168 of recorded incidents.

**Table 6**

All ASB by ward	08/09	As % of 08/09 Total	07/08 Total	As % of 07/08 Total	Actual Difference 08/09 to 07/08	Percentage Difference 08/09 to 07/08
Bewbush	358	9%	500	12%	-142	-28%
Broadfield North	275	7%	243	6%	32	13%
Broadfield South	184	4%	276	7%	-92	-33%
Furnace Green	67	2%	106	3%	-39	-37%
Gossops Green	158	4%	101	3%	57	56%
Ifield	253	6%	299	7%	-46	-15%
Langley Green	341	8%	313	8%	28	9%
Maidenbower	149	4%	114	3%	35	31%
Northgate	750	18%	690	17%	60	9%
Pound Hill North	168	4%	96	2%	72	75%
Pound Hill S & Worth	190	5%	115	3%	75	65%
Southgate	277	7%	229	6%	48	21%
Three Bridges	375	9%	304	8%	71	23%
Tilgate	184	4%	242	6%	-58	-24%
West Green	362	9%	402	10%	-40	-10%
<b>Total</b>	<b>4091</b>	<b>100%</b>	<b>4030</b>	<b>100%</b>	<b>61</b>	<b>2%</b>

In the last year the partnership:

- Agreed 21 Acceptable Behaviour Contracts (ABCs) with young people and their parents/carers to modify and manage their unacceptable behaviour, and to deter them from further activity that could lead to more complaints;
- Increased to 13 the number of anti-social behaviour orders (ASBOs) operating in Crawley and being monitored by partners for compliance;
- Launched Operation Athlete on Friday and Saturday nights between 5 pm and 11 pm to identify young people involved in low-level anti-social behaviour on neighbourhood parades and in residential areas. 177 verbal warnings were given to these young people during the year and this was followed up with letters to their parents/cares describing the effects that their children's anti-social behaviour was having on the quality of life of Crawley residents;
- Appointed an anti-social behaviour youth caseworker to provide early intervention to prevent and deter ASB; produced an operational guide for community safety partners tackling anti-social behaviour, and introduced a new case management system to better store, search and share information on individual cases, particularly where police and Council data has been made compatible with the Home Office National Standard for Incident Recording;
- Used powers provided under the Designated Public Places Order and the Community Safety Accreditation Scheme to seize and confiscated alcohol from young people acting anti-socially in residential areas, parks and open spaces;
- Revised the leaflets on the reporting of ASB, and the guidance available to parents/carers on the link with ASB and alcohol and of local support services.

### **Priority 7** **Tackle domestic abuse, serious sexual offences and hate crime**

In the last year the partnership:

- Established a Multi Agency Risk Assessment Conference (MARAC) to support victims of domestic violence who were at high-risk of further abuse, and additionally appointed a MARAC domestic violence caseworker;
- Opened a pan-Sussex Sexual Assault Referral Centre (SARC) at Crawley Hospital for the victims of violent sexual offences; appointed a number of Police Sexual Assault Liaison Officers and Independent Sexual Assault Referral Officers, and commissioned the third sector to provide a counselling service for victims. Since January 2009, victims have been able to self-refer to the SARC;
- Extended the reporting of hate crime to include racists, homophobic and disablist incidents; provided the opportunity for victims and witnesses to report attacks and abuse via telephone, e-mail and the internet, and commissioned Victim Support Sussex to provide caseworker support to victims and families.

## Priority 8 Reduce road traffic deaths and serious injuries

In the last year the partnership:

- Launched campaigns in the summer and at Christmas (including at Gatwick Airport) to raise awareness of the dangers of drink/driving. The Fire and Rescue Service also parked a static 'gift-wrapped' crashed car at various locations across the town to reinforce the Christmas anti-drink/drive campaign;
- Targeted E2E students at Central Sussex College to raise awareness of the issues of dangerous driving, inexperienced drivers and un-roadworthy vehicles;
- Launched the pan-Sussex Company Operators Safer Transport Scheme (COSTS). This recognises that business drivers have collision rates that are 30-40% higher than those of private drivers and are 53% more likely to be injured than similar drivers who do not drive at work. Nearly a third of all collisions causing death or serious injury involve people driving on business. COSTS provides operators with information on occupational roads risks, vehicle specific speed limits, corporate manslaughter, duty of care and health and safety issues;
- Used Operation Crackdown - the anti-social driving and abandoned vehicle website - to target resources at locations that generated the most complaints;
- Used a mobile speed indicator device (SID) to encourage motorists to comply with the 30mph speed limit on roads where complaints of speeding had been made by local residents on a regular basis via Operation Crackdown;
- Referred 210 drink/drivers arrested by the police to the Crawley Alcohol Arrest Referral Service and provided them with Alcohol Harm Reduction Packs;
- Provided road safety crossing advice to children in local junior schools.

## Additional activity undertaken by the crime and disorder reduction partnership

In the last year the partnership also:

- Formed a Local Action Team to tackle anti-social behaviour in Three Bridges
- Created mechanisms to monitor and respond to community tensions
- Provided community safety improvement advice for Langley Green, Ifield and Furness Green neighbourhood shopping parades and environs
- Supported the work of the Crawley Together Pathfinder Programme
- Worked towards achieving the strategic aims and objectives in the Crawley Sustainable Community Strategy 2008 to 2012 [visit www.crawley.gov.uk](http://www.crawley.gov.uk)
- Worked towards achieving the relevant improvement targets in the West Sussex Local Area Agreement (LAA) [visit www.westsussex.gov.uk](http://www.westsussex.gov.uk)
- Carried out a Strategic Assessment of crime and disorder in Crawley
- Produced the 2009/10 Community Safety Partnership Action Plan
- Agreed the funding plan to support delivery of the action plan
- Sought to provide value for money and cost effectiveness.

Table 7 sets out the position of the Crawley Crime and Disorder Reduction Partnership (CDRP) compared with its most similar CDRPs elsewhere in England.

**Table 7**

<b>All Crime per 1,000 residents</b>	
Dorset – Christchurch	58.098
Dorset – Poole	74.882
Hampshire – Rushmoor	83.527
Greater Manchester – Stockport	86.254
Greater Manchester – Trafford	88.318
Dorset – Weymouth & Portland	93.129
Hertfordshire – Stevenage	95.795
Devon & Cornwall – Plymouth	96.407
Metropolitan Police – Hounslow	107.973
Essex – Harlow	109.765
Hertfordshire – Watford	109.884
<b>Sussex – Crawley</b>	<b>112.388</b>
Hampshire – Portsmouth	127.041
Lancashire – Blackpool	129.384
Hampshire – Southampton	146.359
<b>Most Similar Group average</b>	<b>100.881</b>

This review has provided a summary of the activities and achievements of the Crawley Crime and Disorder Reduction Partnership in the year April 2008 to March 2009. But, the position of the Crawley CDRP compared to its most similar group of CDRPs at 12/15 (Table 7), above, combined with the fact that only about 45% of all crime is actually recorded by police, leaves no room for complacency and the work of the partnership will continue unabated in 2009/10 and beyond.

Objectives not commenced or completed during the first year of the Community Safety Partnership Plan (2008/11) will be carried over into 2009/10. These are in the 2009/10 partnership action plan and can be viewed at [www.crawley.gov.uk/communitysafety](http://www.crawley.gov.uk/communitysafety)

During 2008/09, the West Sussex Community Safety Unit provided the Crawley Crime and Disorder Reduction Partnership with funding, advice and services, and supported its efforts to enhance community safety in Crawley and to improve people's quality of life.

During the year, the West Sussex Strategic Community Safety Partnership supported the work of the Crawley CDRP, through the delivery and development of the County Community Safety Agreement and the West Sussex Local Area Agreement.

During the year, Government Office for the South East (GOSE) provided the Crawley Crime and Disorder Reduction Partnership with funding for its community safety partnership plan. The Crawley CDRP would like to thank these bodies for their help.

**For more information about crime and community safety in Crawley visit  
[www.crawley.gov.uk/communitysafety](http://www.crawley.gov.uk/communitysafety) and/or [www.sussex.police.uk](http://www.sussex.police.uk)  
or email [communitysafety@crawley.gov.uk](mailto:communitysafety@crawley.gov.uk)**