

Route Option Discussion

Crawley Western Link Road – Northern Section Corridor Study

GAL meeting - 03-09-2021



Agenda

- **Aim of Today's meeting**
- **Study Recap**
- **Option Development**
 - CWLR Eastern Section
 - CWLR Middle Section
 - CWLR Western Section
- **AOB**

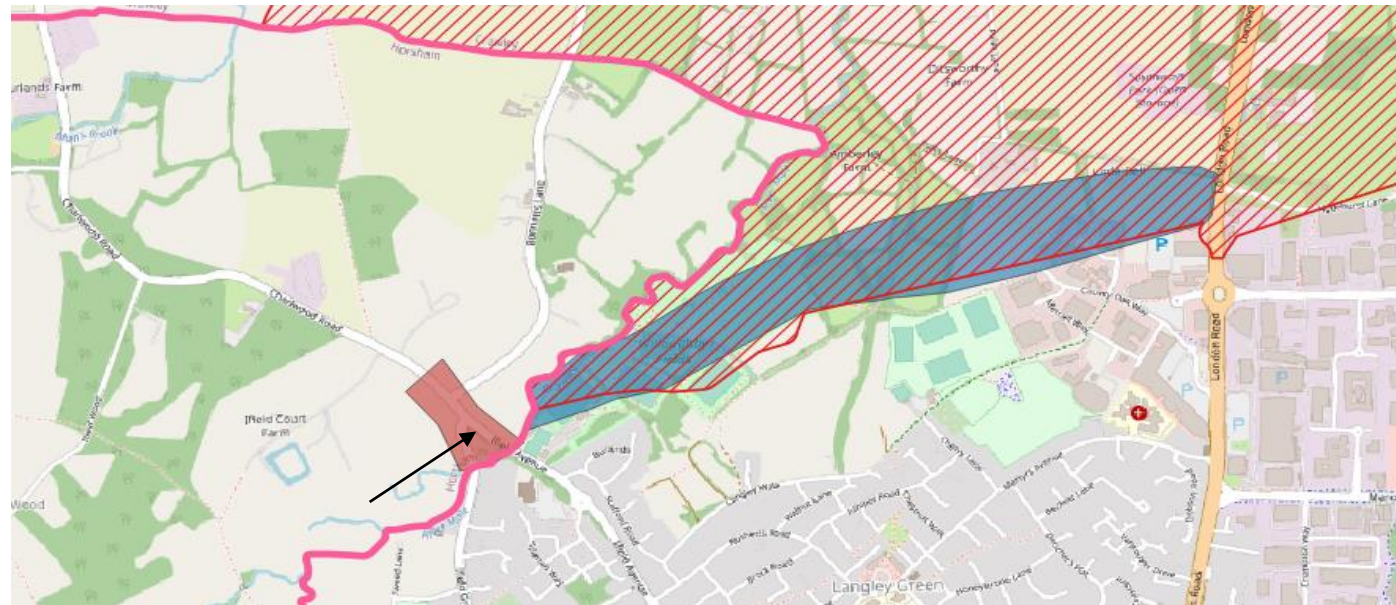
Aim of the Meeting

- Ensure GAL is kept up to date with the work we are doing and involved in the Study process
- To discuss the options developed to date and seek GAL input to:
 - Identify any missing options
 - Sifting of any developed options
 - Information to feed into the assessment of options
- Confirm date for a follow up meeting to discuss the route option assessment

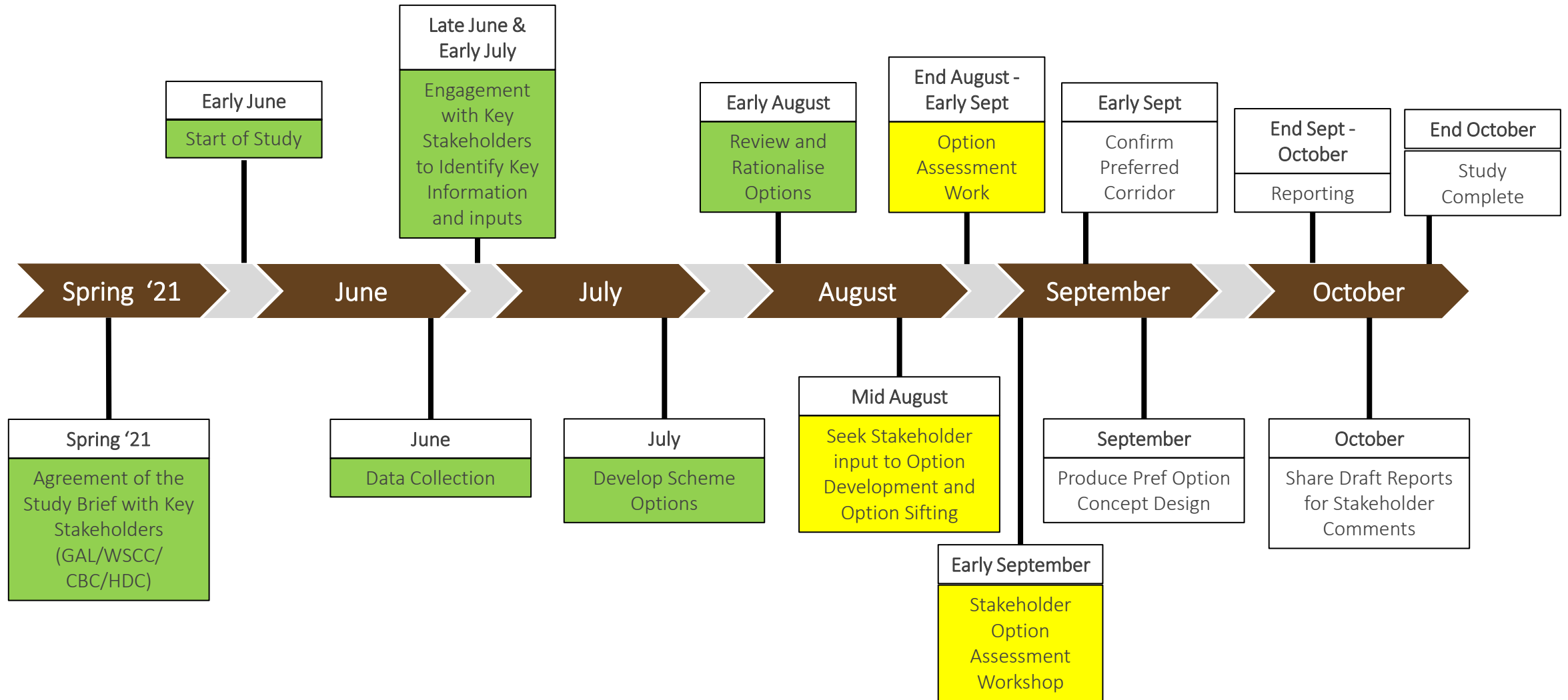
Study Recap

Purpose of the study

The purpose of the study is to identify a corridor for the northern section of the Crawley Western Link Road which is accepted by stakeholders and overcomes current conflicts. (e.g. between safeguarding zone and current proposed Crawley Local Plan route corridor)

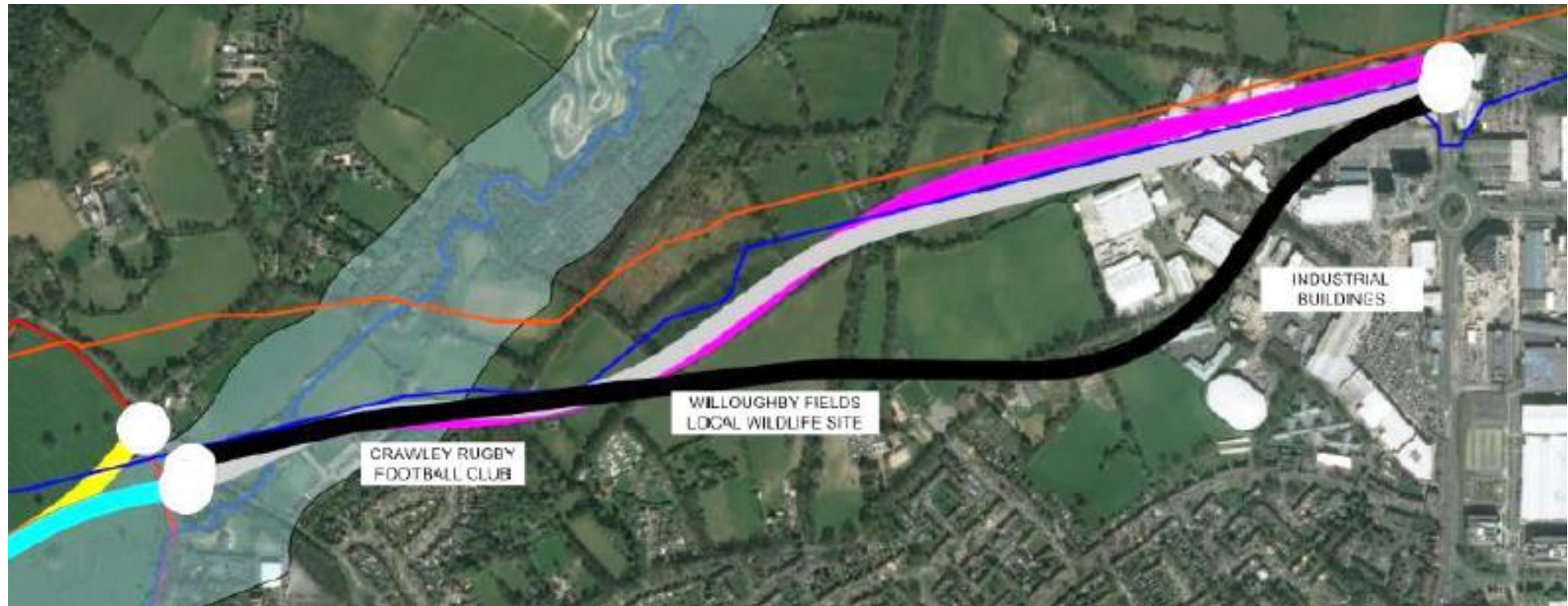


The Study Programme and Process



Route options previously considered

From the Arcadis /Homes England work, three route options were identified for the northern section of the Crawley Western Link Road.

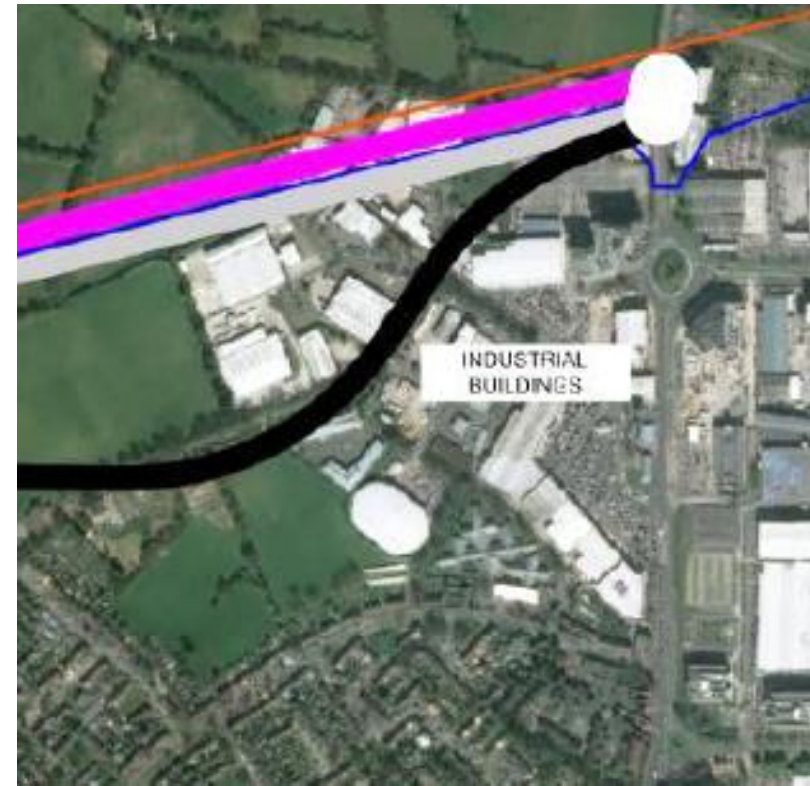


Option Development

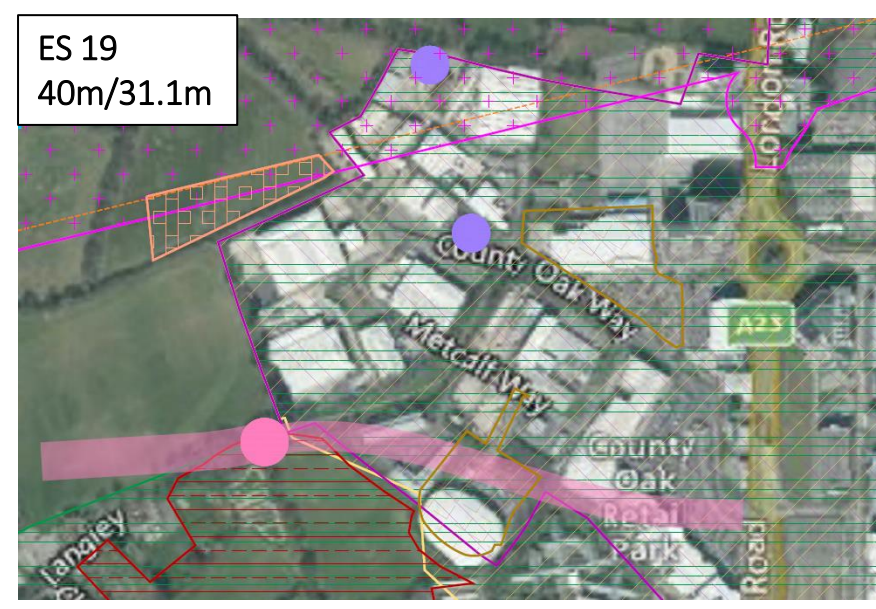
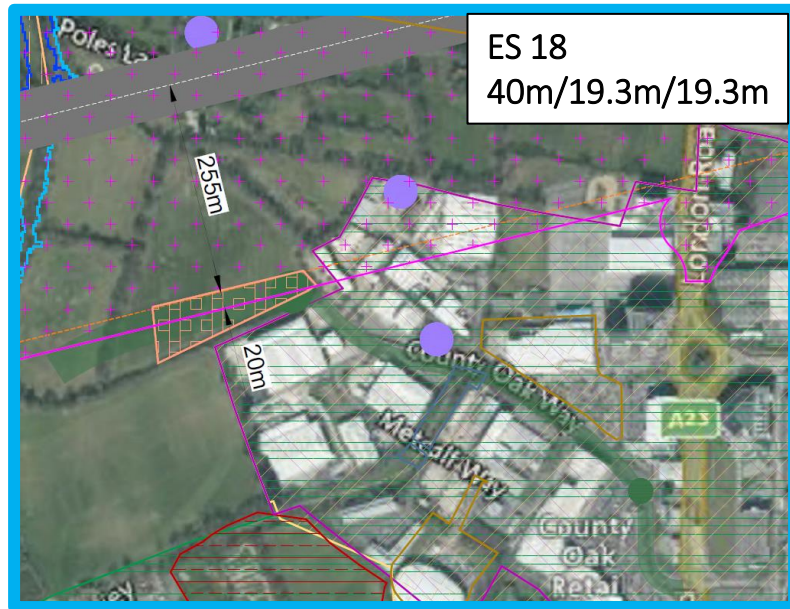
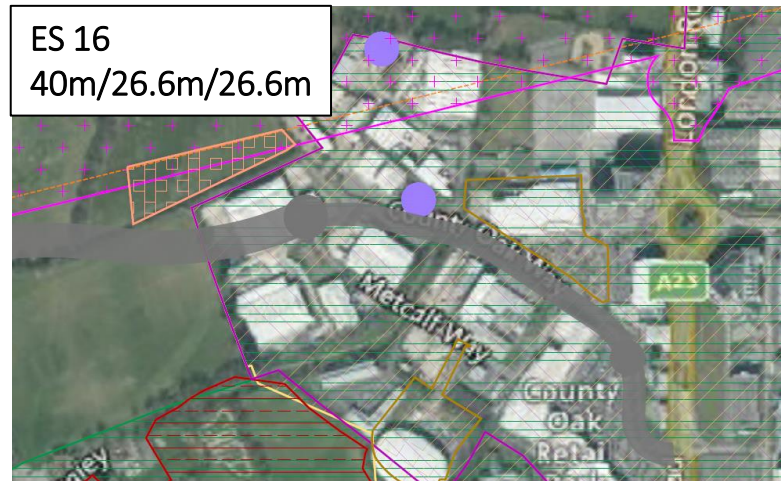
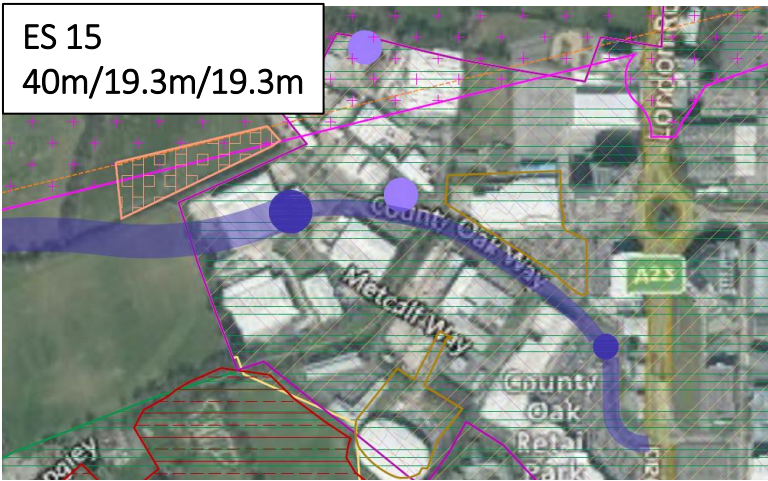
Study Area



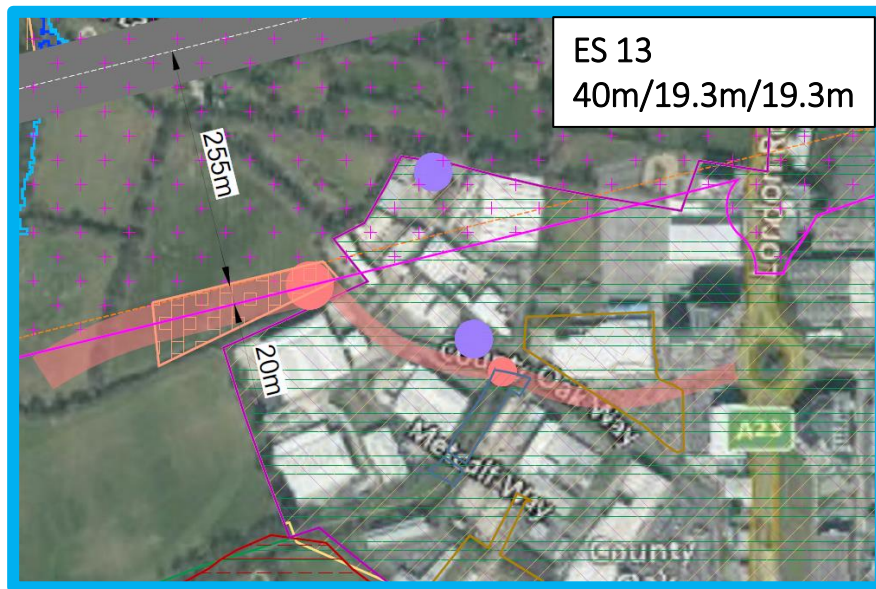
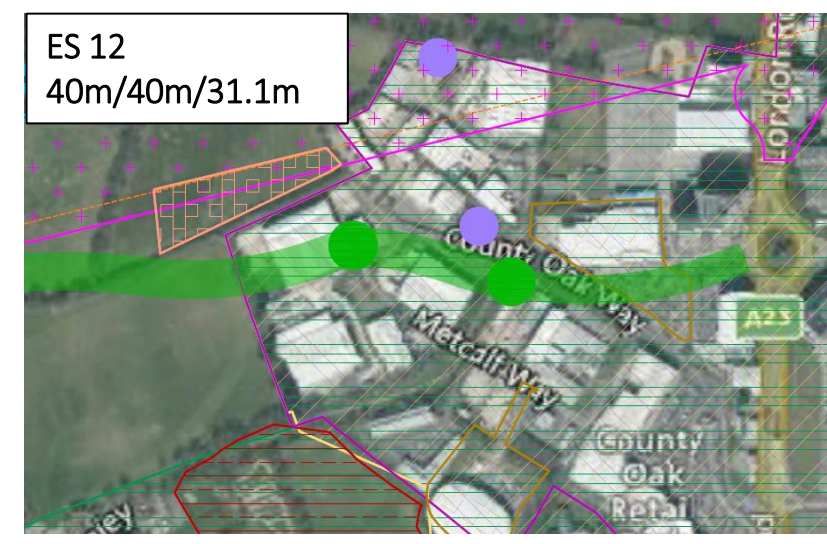
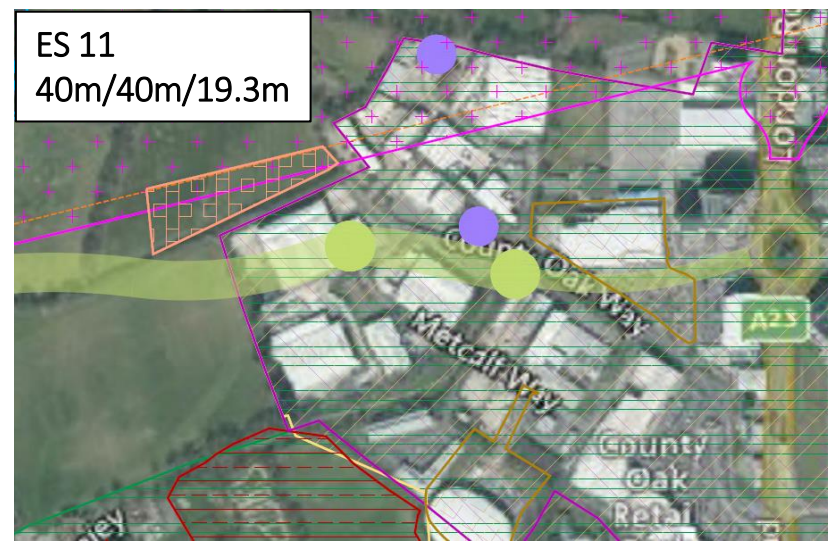
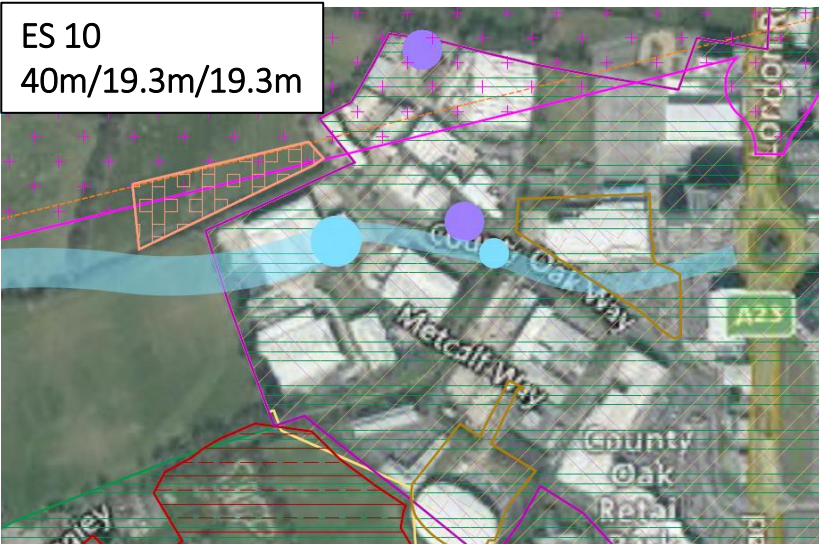
Eastern Options



CWLR Eastern Section "County Oak Way Option"

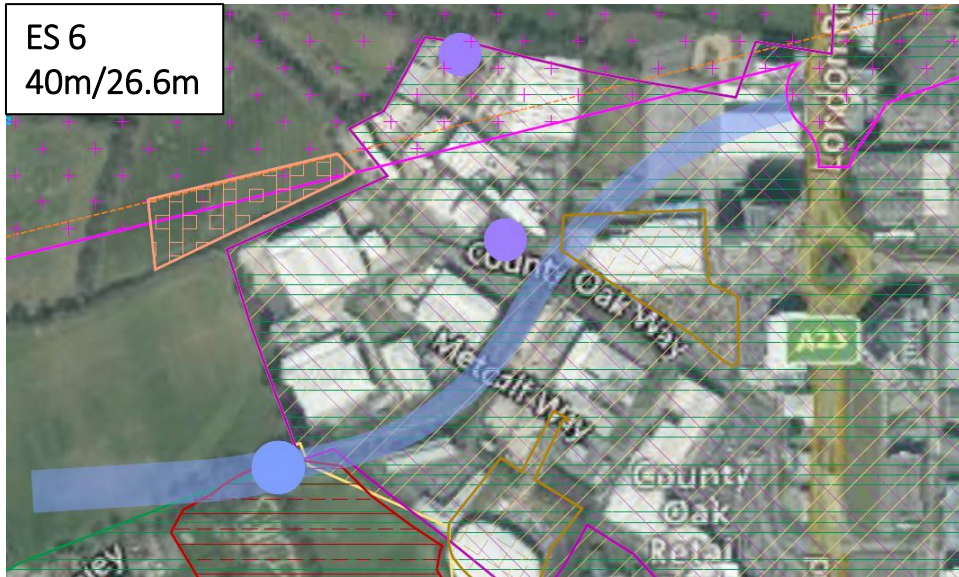


CWLR Eastern Section “Fleming Way R’bout Options”



CWLR Eastern Section “Bridleway Options”

ES 6
40m/26.6m



ES 7
40m/19.3m/19.3m



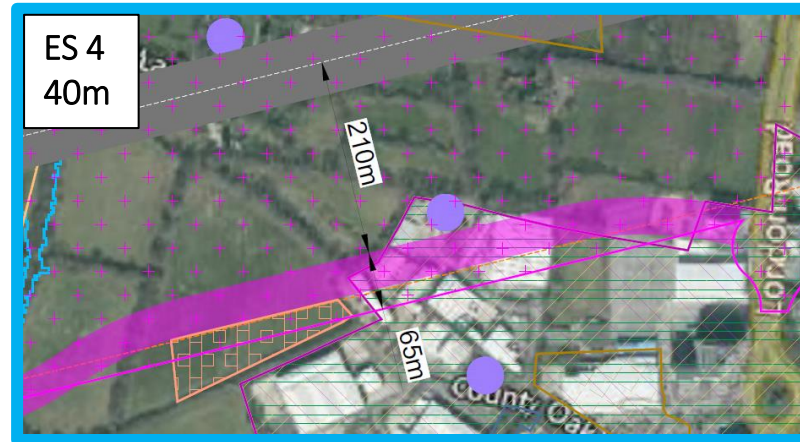
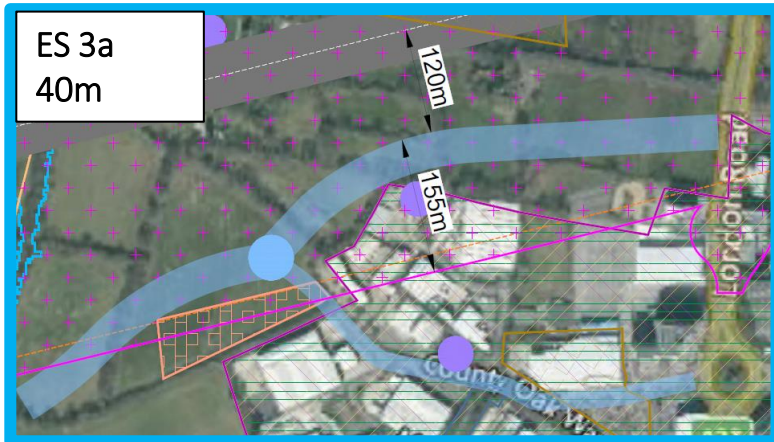
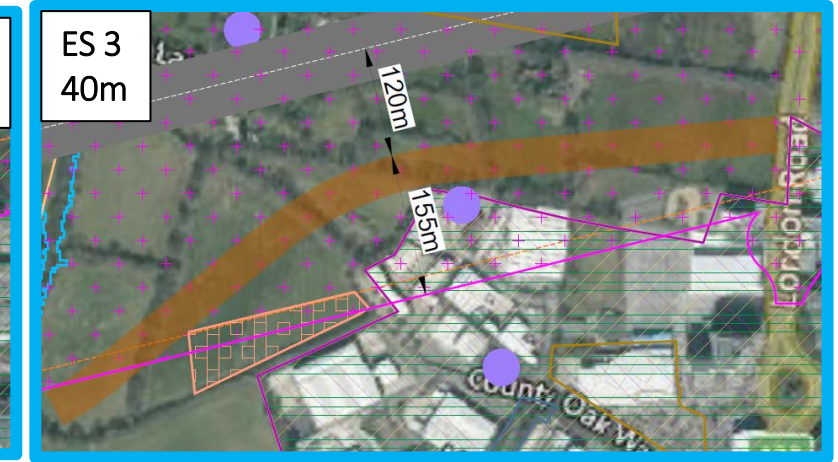
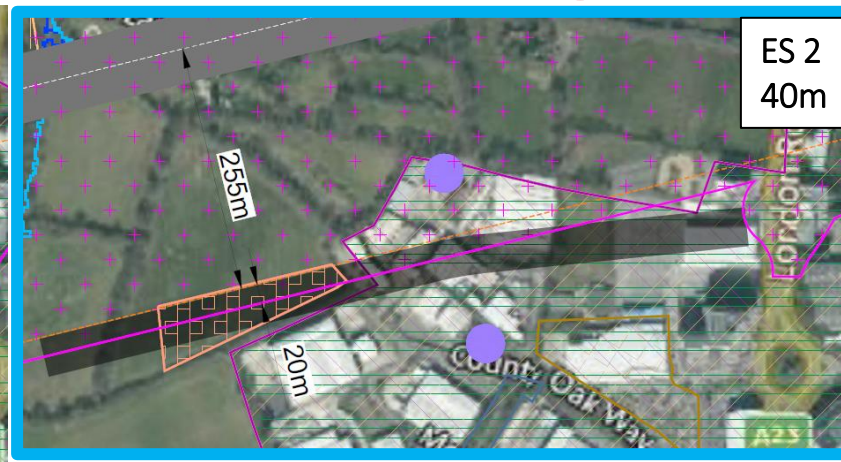
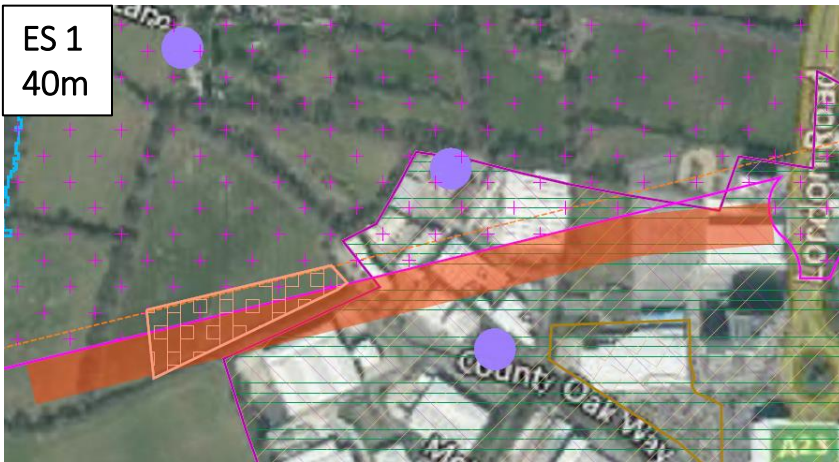
ES 8
40m/26.6m/26.6m



ES 9
40m/31.1m/31.1m



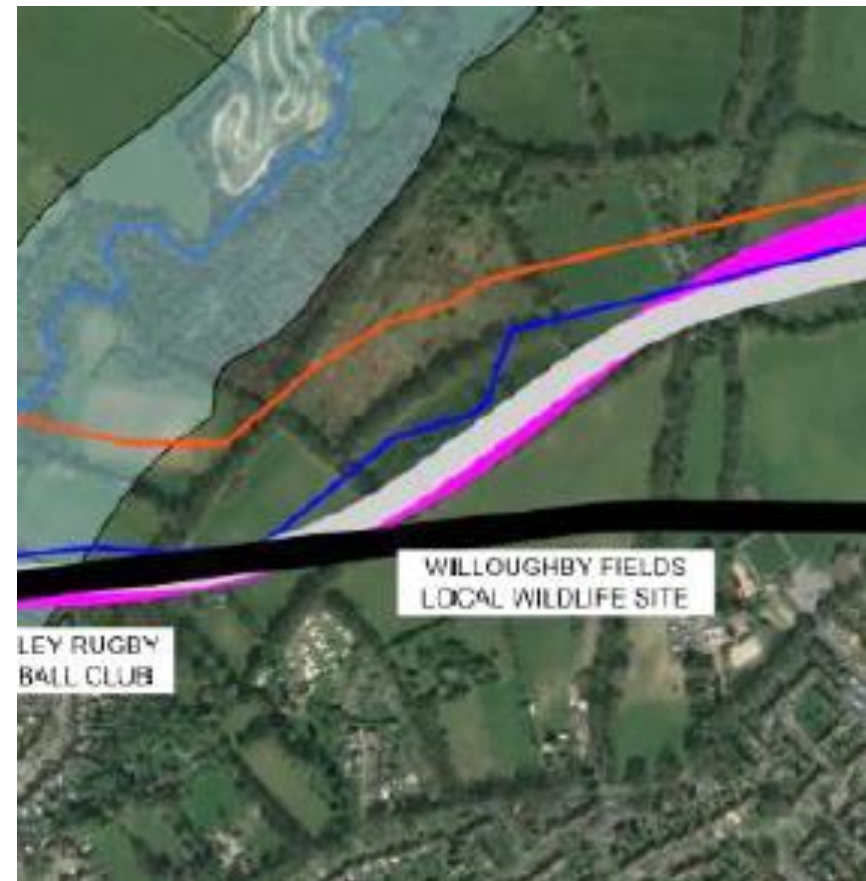
CWLR Eastern Section "Safeguarding Options"



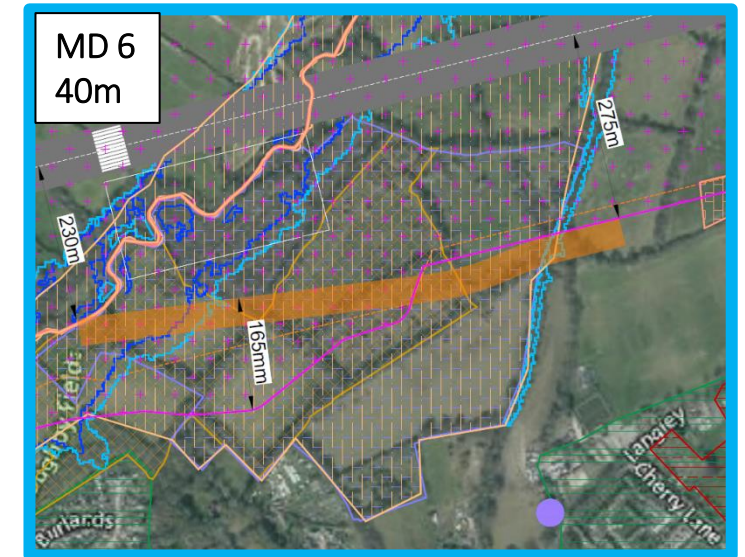
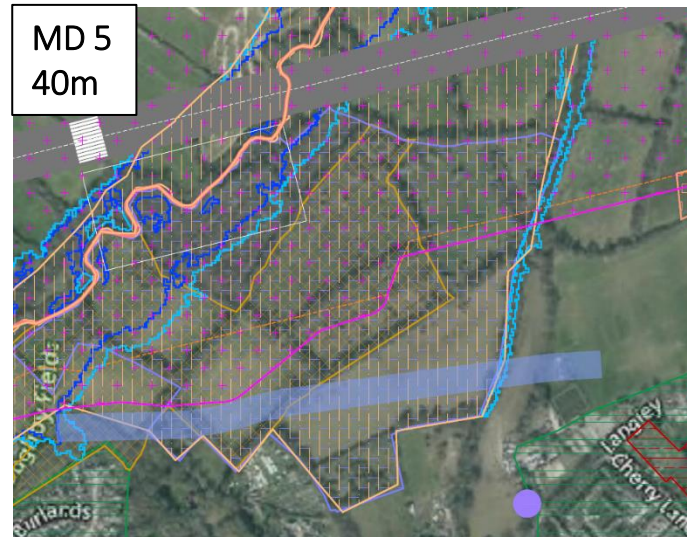
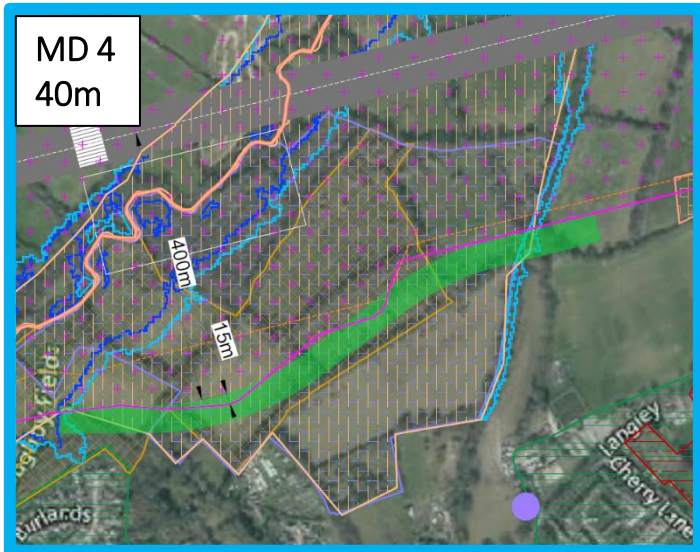
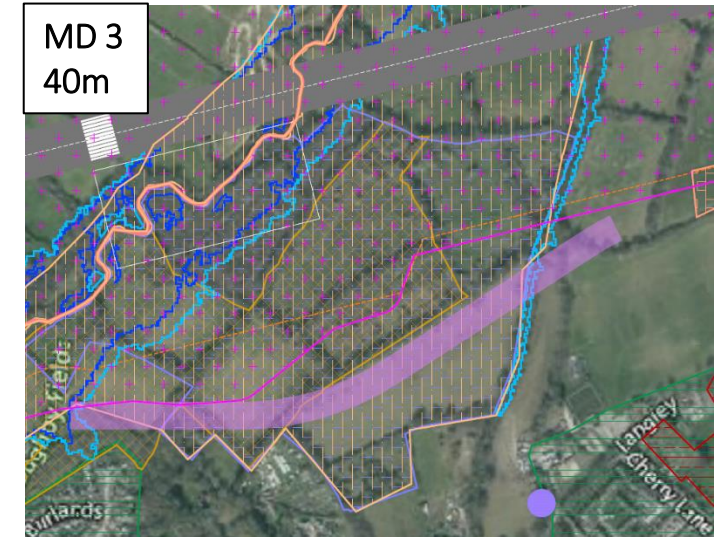
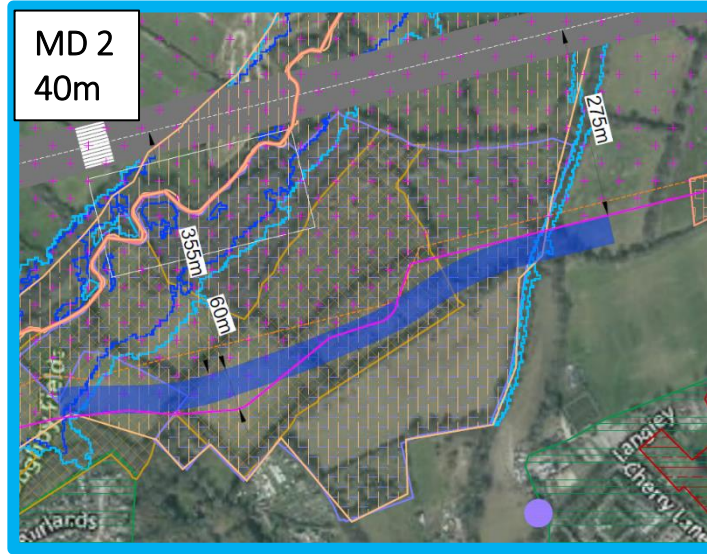
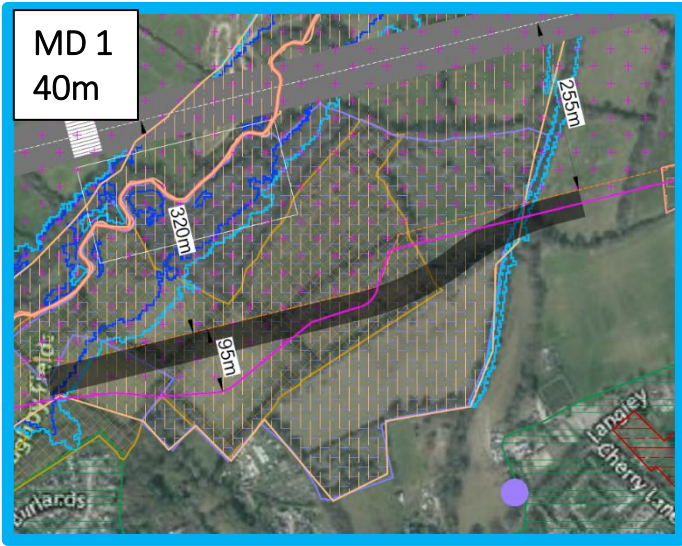
Eastern Options Discussion

- Are there Options which appear to be missing?
- Can you provide evidence to support the sifting of any of the options?
- Can you provide information to feed into the Assessment of Options

Middle Options



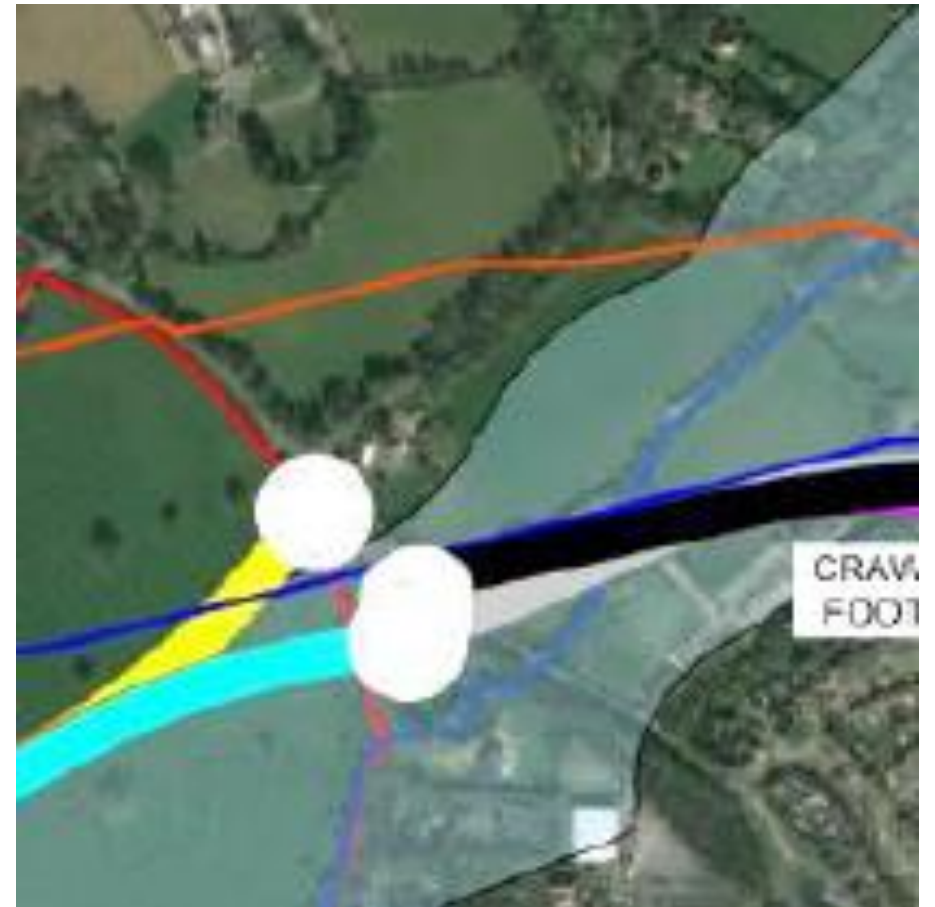
CWLR Middle Section



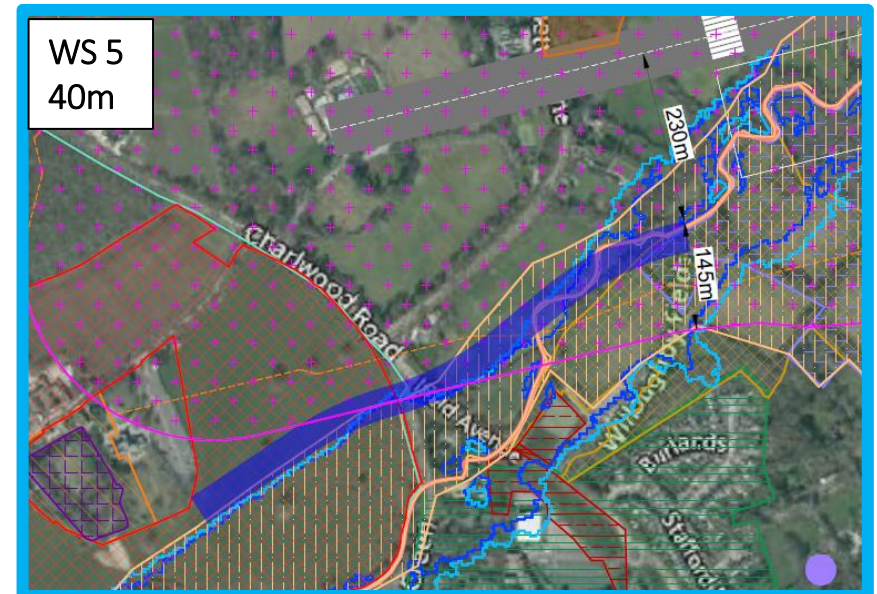
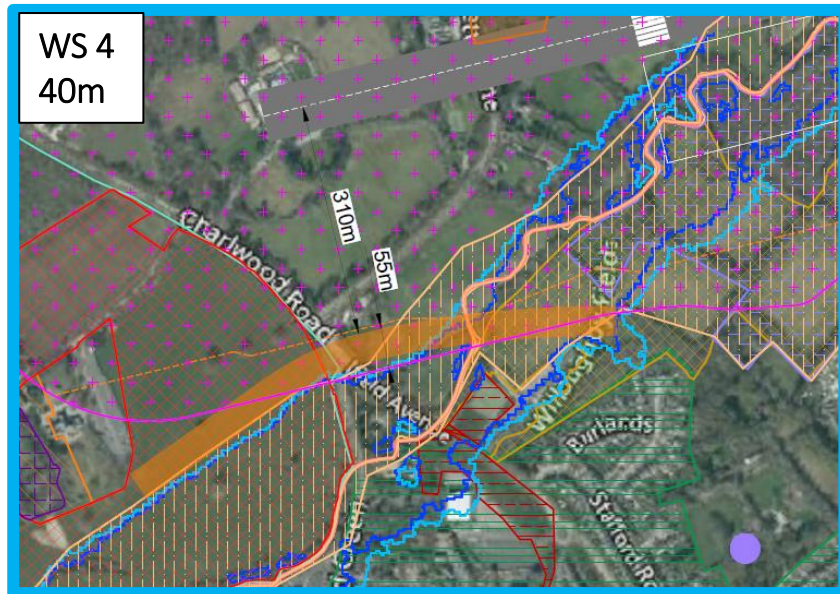
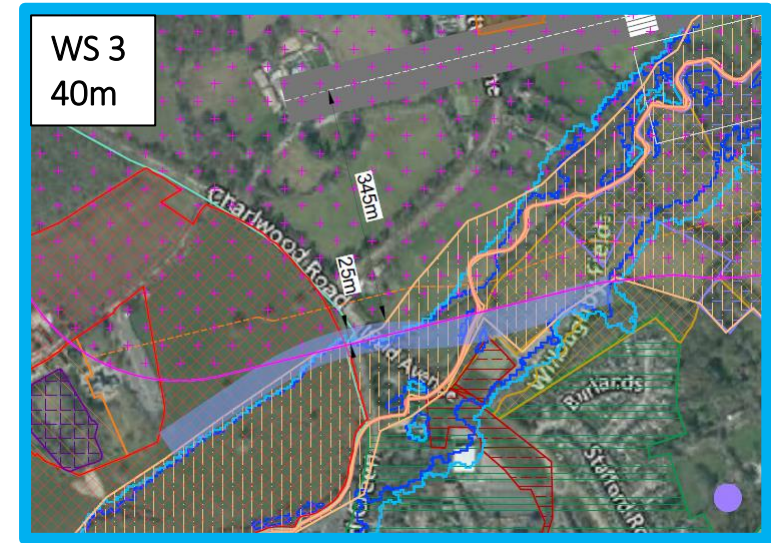
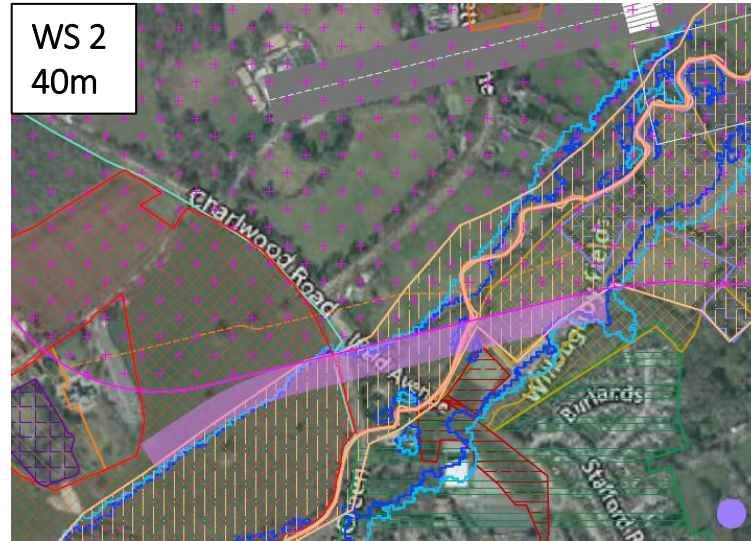
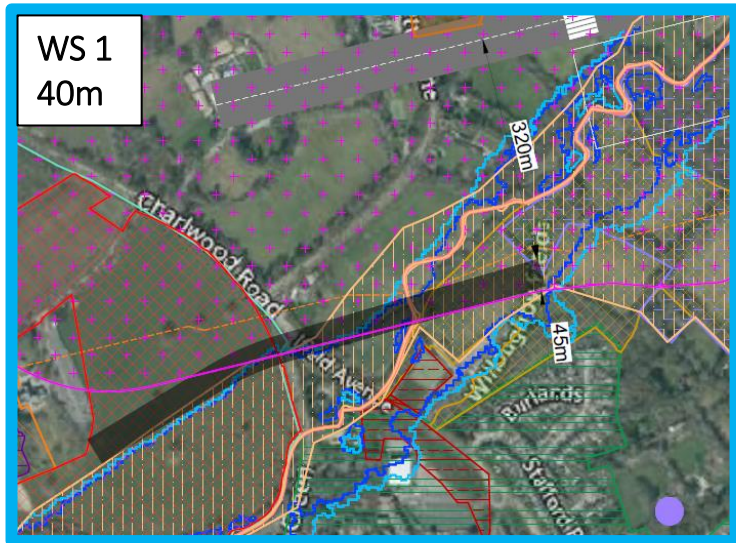
Middle Options Discussion

- Are there Options which appear to be missing?
- Can you provide evidence to support the sifting of any of the options?
- Can you provide information to feed into the Assessment of Options

Western Options



CWLR Western Section



Western Options Discussion

- Are there Options which appear to be missing?
- Can you provide evidence to support the sifting of any of the options?
- Can you provide information to feed into the Assessment of Options

AOB

Data Requested

From whom	Information required	Importance	Format	Requested	Received	Interim Assumption Made
GAL	Flood mapping (with GAL expansion)	HIGH	CAD, GIS shape file or plan	NO	NO	Assume flooding is contained within environmental flood channel corridors
GAL	Design of internal elements of old and new safeguarding zone	HIGH	CAD, GIS shape file or plan	NO	PARTLY	We have used the information provided by Elizabeth

SYSTRA
S Y S T R A . C O . U K