



GATWICK MASTER PLAN JULY 2012

Gatwick

APPENDICES

A

Appendix A - Drawings



Contents

- FIG A.1 Gatwick Location Plan
- FIG A.2 Existing Airport – Land Use Plan
- FIG A.3 Existing Airport – Key Infrastructure
- FIG A.4 Existing Airport – Air Quality Contours
- FIG A.5 Existing Airport – Air Noise Contours
- FIG A.6 Existing Airport – Ground Noise Measuring Sites
- FIG A.7 Gatwick in 2020 – Land Use Plan
- FIG A.8 Gatwick in 2020 – Development Opportunities
- FIG A.9 Gatwick in 2020 – Air Quality Contours
- FIG A.10 Gatwick in 2020 – Air Noise Contours
- FIG A.11 Gatwick in 2030 (single runway) – Land Use Plan
- FIG A.12 Gatwick in 2030 (single runway) – Development Opportunities
- FIG A.13 Gatwick in 2030 (two runways) – Land Use Plan
- FIG A.14 Gatwick in 2030 (two runway) – Air Noise Contours



0m 500m 1km
100m



Mole Valley District

CHARLWOOD

Horsham District

RIVER MOLE

A217

A23

HORLEY

Reigate and Banstead District

RIVER MOLE

GATWICK STREAM

Tandridge District

CRAWTERS BROOK

GATWICK STREAM

Mid-Sussex District

A23

Crawley District

LONDON TO BRIGHTON RAILWAY

A2011

A264

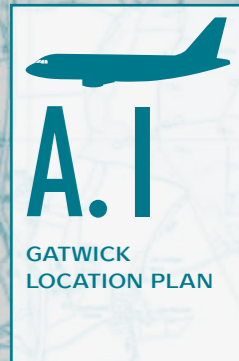
A2220

M23

A23

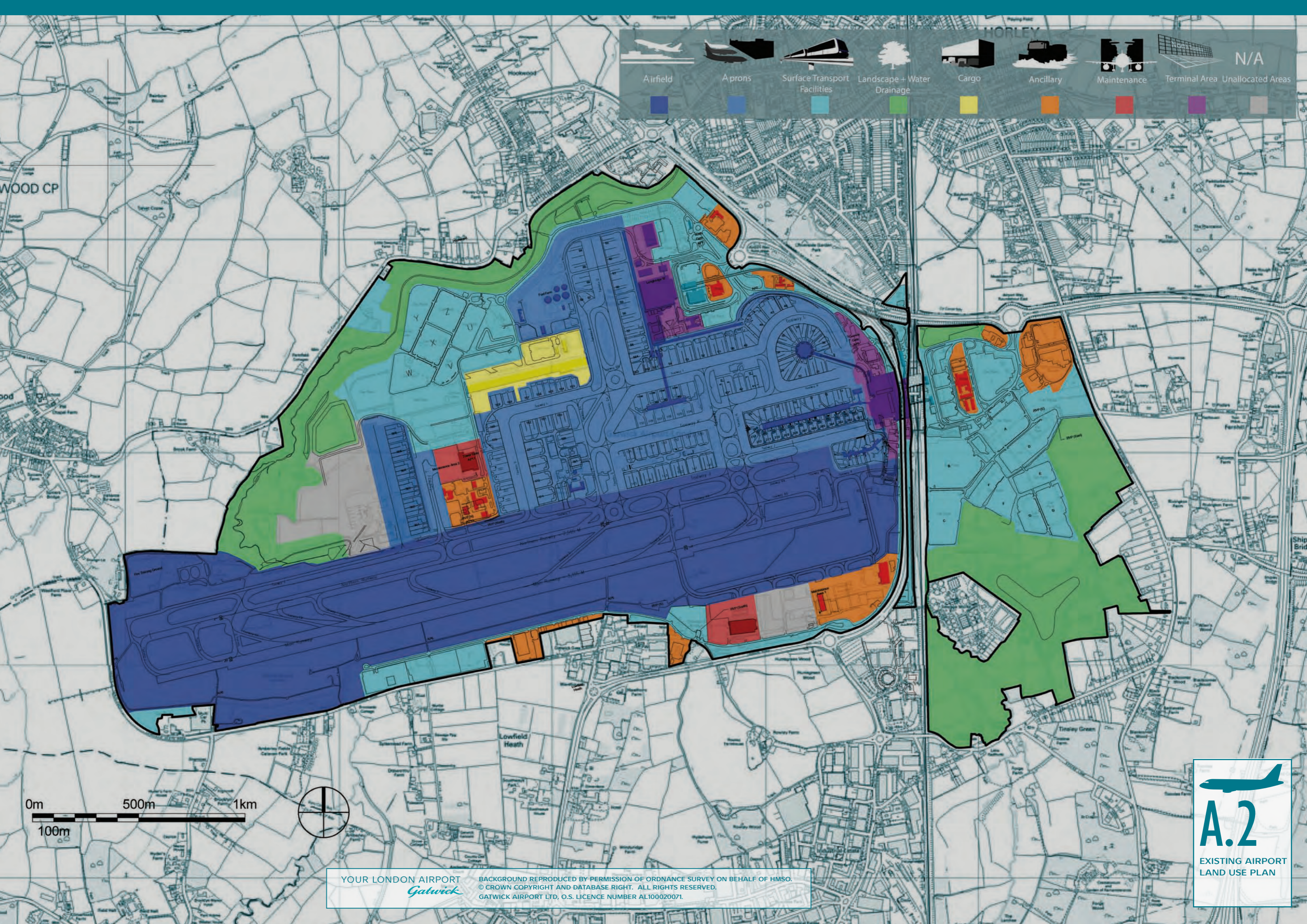
CRAWLEY

YOUR LONDON AIRPORT
Gatwick
BACKGROUND REPRODUCED BY PERMISSION OF ORDNANCE SURVEY ON BEHALF OF HMSO.
© CROWN COPYRIGHT AND DATABASE RIGHT. ALL RIGHTS RESERVED.
GATWICK AIRPORT LTD, O.S. LICENCE NUMBER AL100020071.



YOUR LONDON AIRPORT
Gatwick

									N/A
Airfield	Aprons	Surface Transport Facilities	Landscape + Water Drainage	Cargo	Ancillary	Maintenance	Terminal Area	Unallocated Areas	

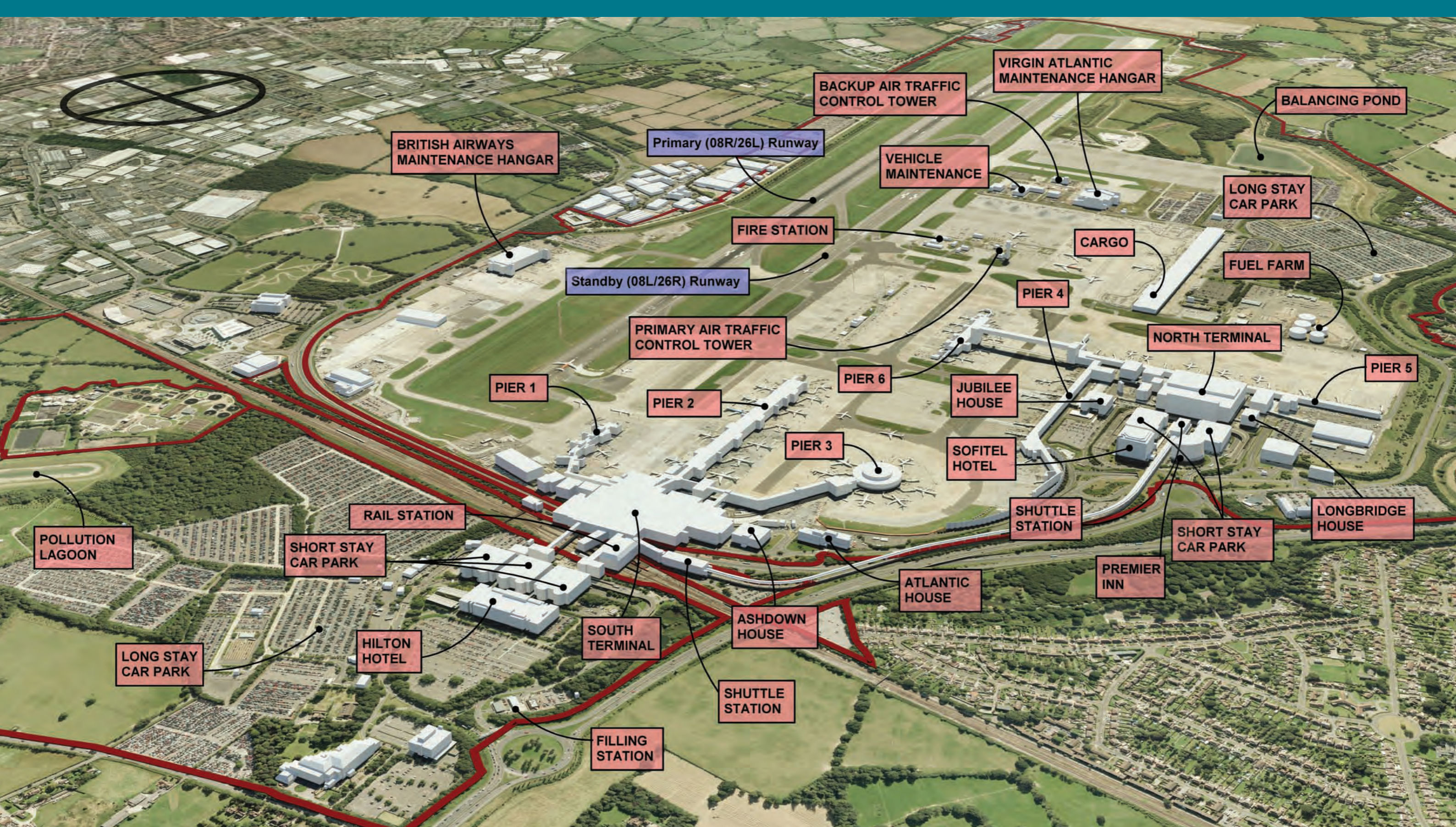


YOUR LONDON AIRPORT
Gatwick

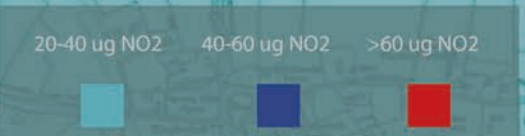
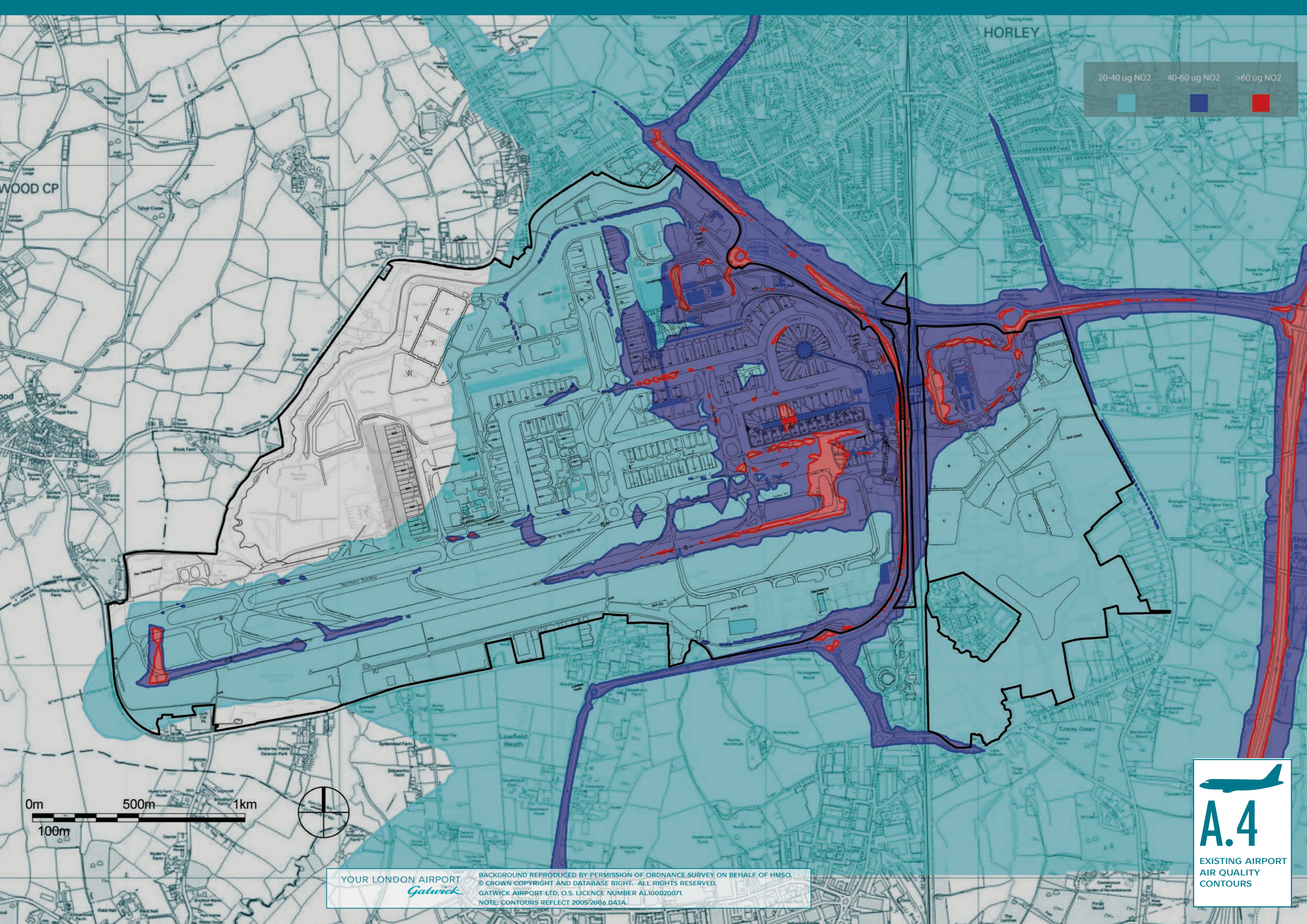
BACKGROUND REPRODUCED BY PERMISSION OF ORDNANCE SURVEY ON BEHALF OF HMSO.
© CROWN COPYRIGHT AND DATABASE RIGHT. ALL RIGHTS RESERVED.
GATWICK AIRPORT LTD, O.S. LICENCE NUMBER AL100020071.

A.2
EXISTING AIRPORT
LAND USE PLAN

YOUR LONDON AIRPORT
Gatwick



YOUR LONDON AIRPORT
Gatwick

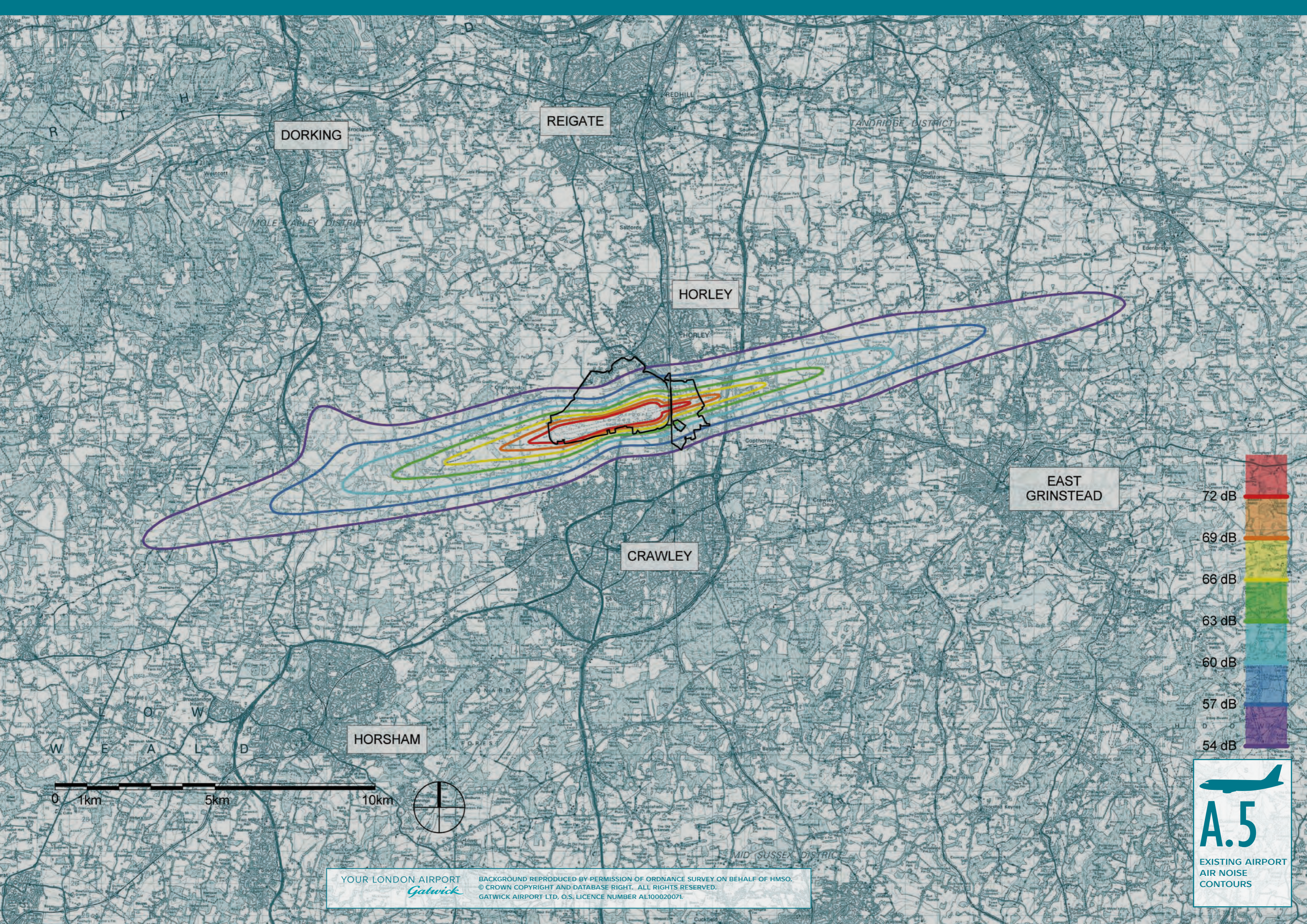


YOUR LONDON AIRPORT
Gatwick

BACKGROUND REPRODUCED BY PERMISSION OF ORDNANCE SURVEY ON BEHALF OF HMSO.
© CROWN COPYRIGHT AND DATABASE RIGHT. ALL RIGHTS RESERVED.
GATWICK AIRPORT LTD, O.S. LICENCE NUMBER AL100020071.
NOTE: CONTOURS REFLECT 2005/2006 DATA.

A.4
EXISTING AIRPORT
AIR QUALITY
CONTOURS

YOUR LONDON AIRPORT
Gatwick



DORKING

REIGATE

HORLEY

EAST GRINSTEAD


CRAWLEY

HORSHAM



YOUR LONDON AIRPORT
Gatwick

BACKGROUND REPRODUCED BY PERMISSION OF ORDNANCE SURVEY ON BEHALF OF HMSO.
© CROWN COPYRIGHT AND DATABASE RIGHT. ALL RIGHTS RESERVED.
GATWICK AIRPORT LTD, O.S. LICENCE NUMBER AL100020071.


A.5
EXISTING AIRPORT
AIR NOISE
CONTOURS

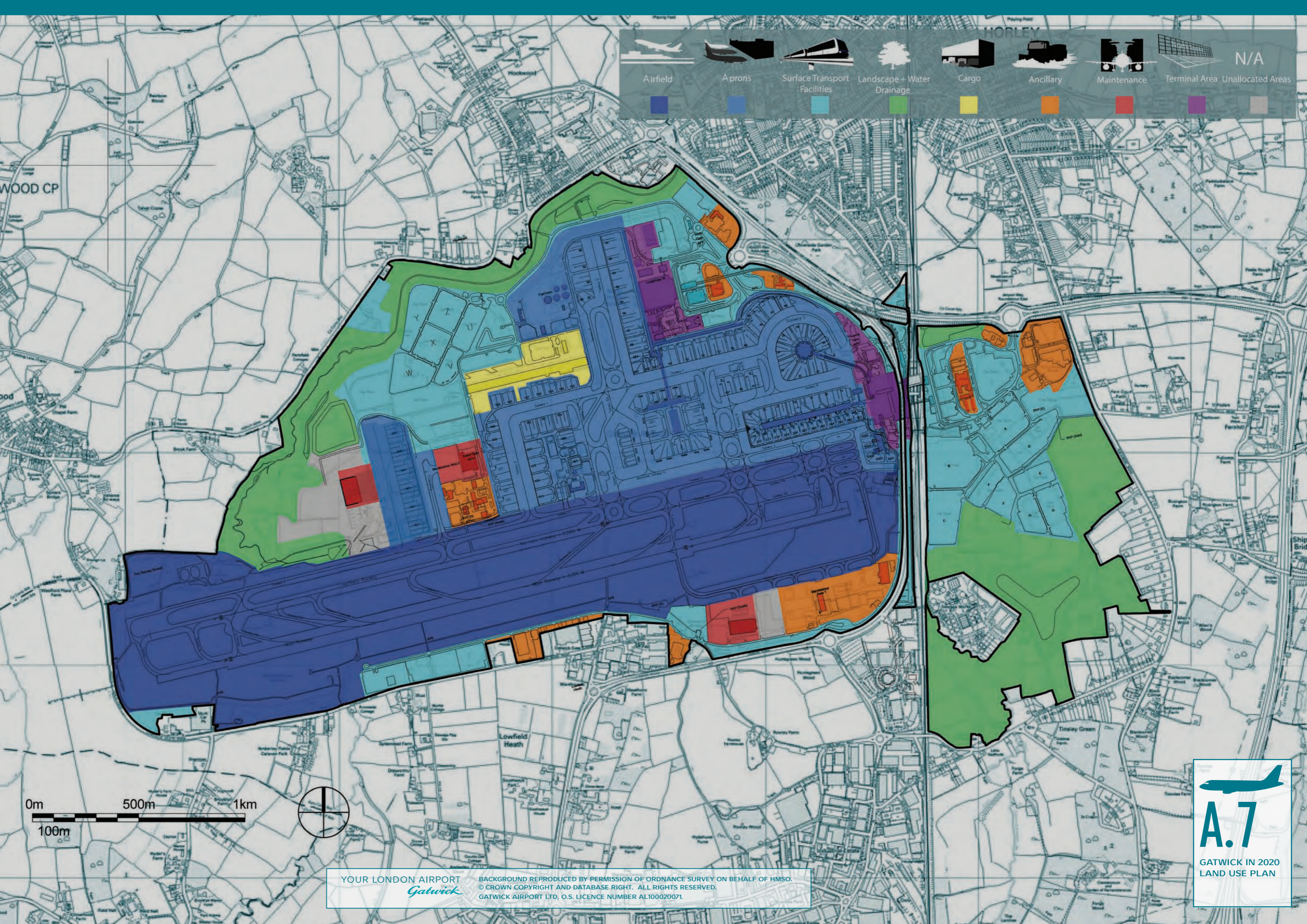
YOUR LONDON AIRPORT
Gatwick



YOUR LONDON AIRPORT
Gatwick

BACKGROUND REPRODUCED BY PERMISSION OF ORDNANCE SURVEY ON BEHALF OF HMSO.
 © CROWN COPYRIGHT AND DATABASE RIGHT. ALL RIGHTS RESERVED.
 GATWICK AIRPORT LTD, O.S. LICENCE NUMBER AL100020071.

YOUR LONDON AIRPORT
Gatwick

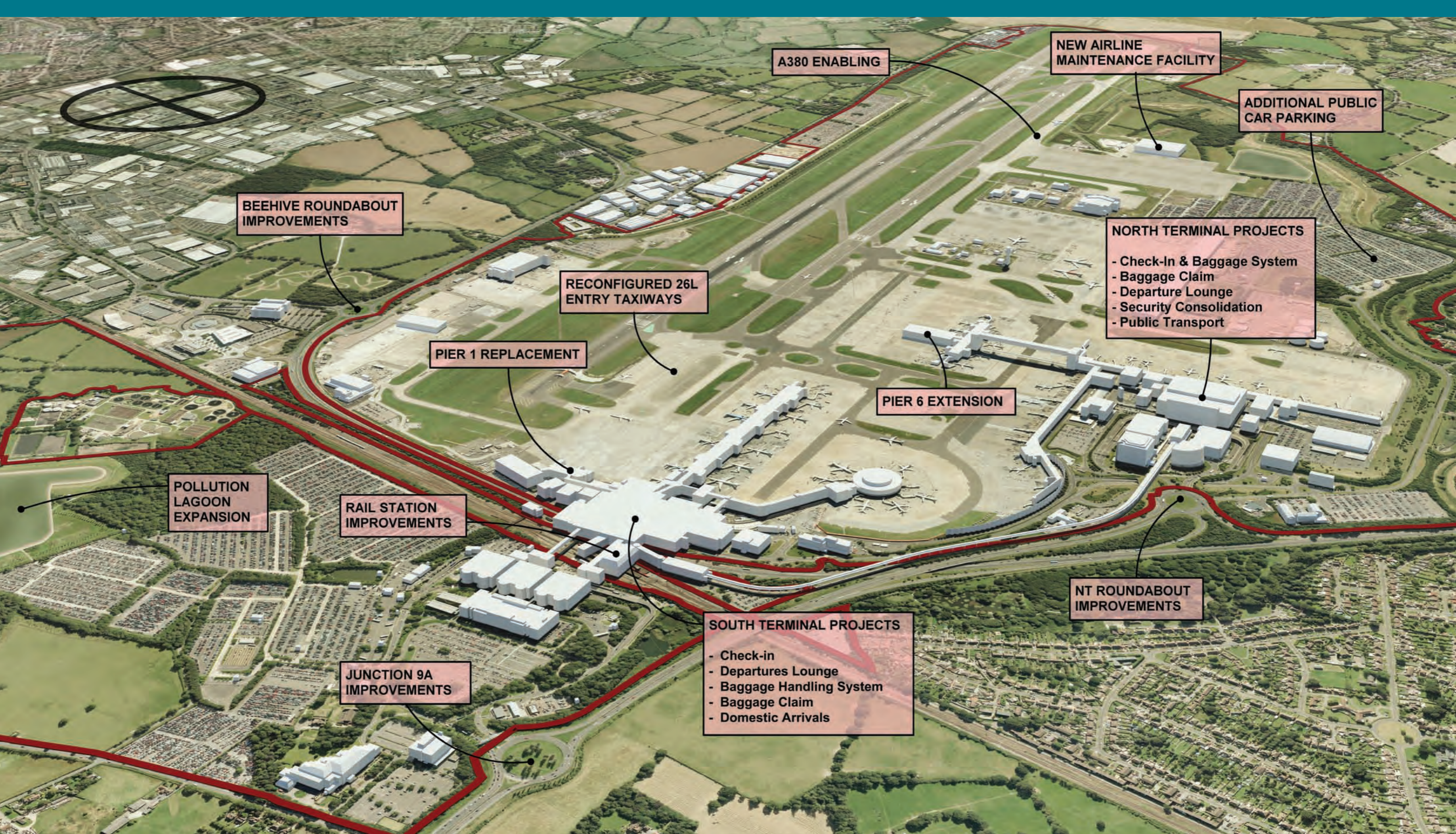


YOUR LONDON AIRPORT
Gatwick

BACKGROUND REPRODUCED BY PERMISSION OF ORDNANCE SURVEY ON BEHALF OF HMSO.
© CROWN COPYRIGHT AND DATABASE RIGHT. ALL RIGHTS RESERVED.
GATWICK AIRPORT LTD, O.S. LICENCE NUMBER AL100020071.



YOUR LONDON AIRPORT
Gatwick



BEEHIVE ROUNDABOUT IMPROVEMENTS

A380 ENABLING

NEW AIRLINE MAINTENANCE FACILITY

ADDITIONAL PUBLIC CAR PARKING

NORTH TERMINAL PROJECTS
- Check-In & Baggage System
- Baggage Claim
- Departure Lounge
- Security Consolidation
- Public Transport

RECONFIGURED 26L ENTRY TAXIWAYS

PIER 1 REPLACEMENT

PIER 6 EXTENSION

POLLUTION LAGOON EXPANSION

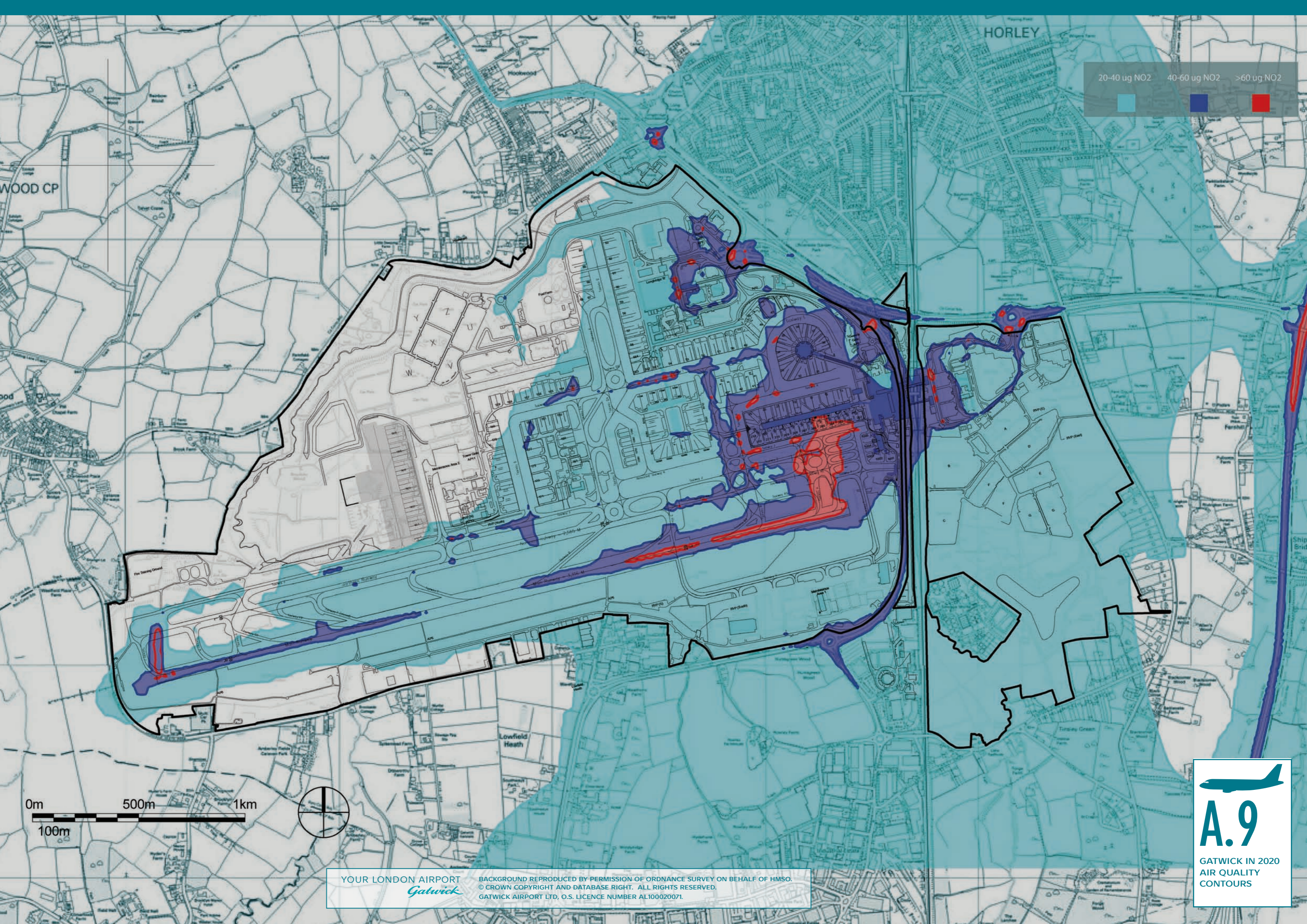
RAIL STATION IMPROVEMENTS

NT ROUNDABOUT IMPROVEMENTS

SOUTH TERMINAL PROJECTS
- Check-in
- Departures Lounge
- Baggage Handling System
- Baggage Claim
- Domestic Arrivals

JUNCTION 9A IMPROVEMENTS

YOUR LONDON AIRPORT
Gatwick

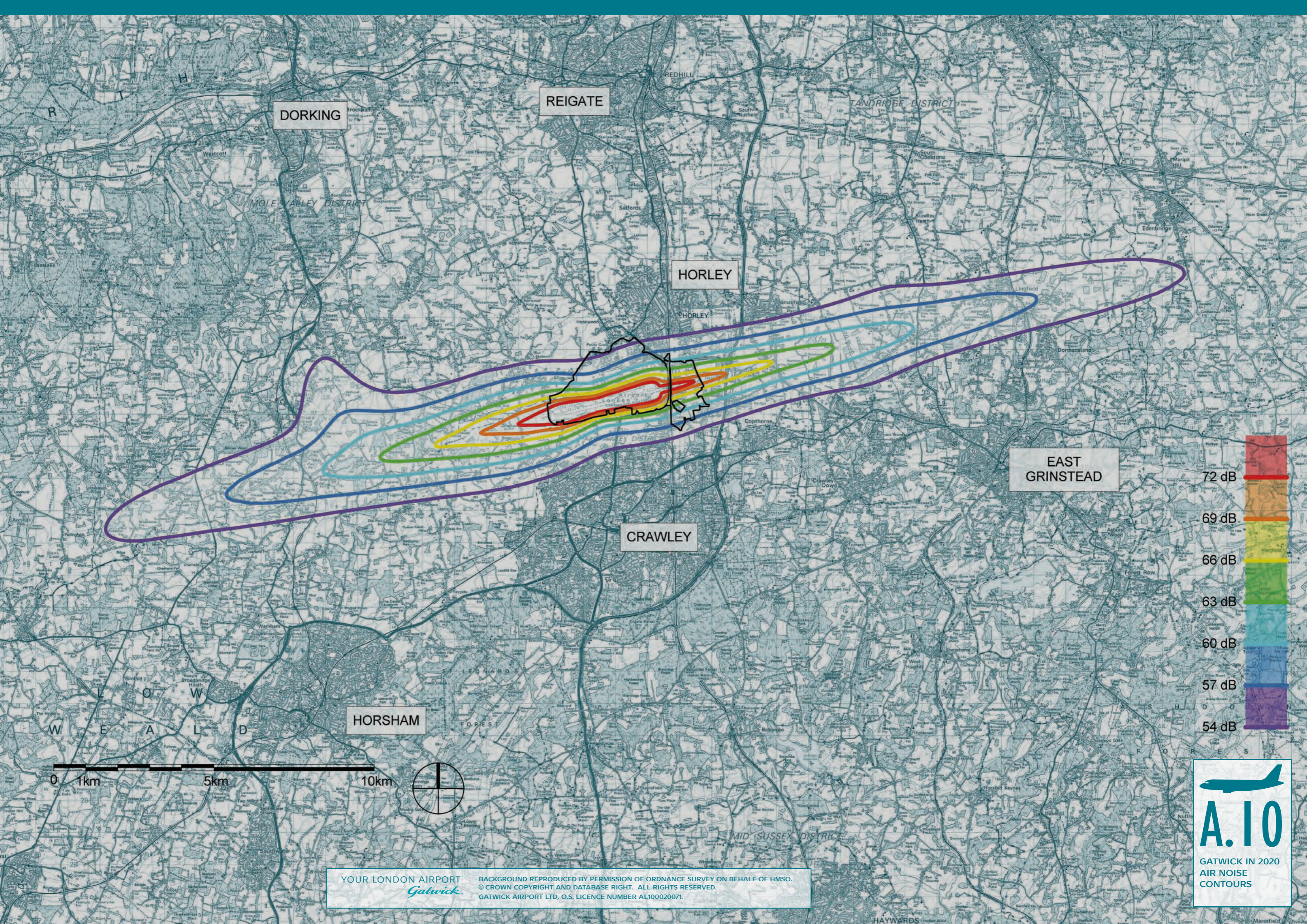


YOUR LONDON AIRPORT
Gatwick

BACKGROUND REPRODUCED BY PERMISSION OF ORDNANCE SURVEY ON BEHALF OF HMSO.
© CROWN COPYRIGHT AND DATABASE RIGHT. ALL RIGHTS RESERVED.
GATWICK AIRPORT LTD, O.S. LICENCE NUMBER AL100020071.

A.9
GATWICK IN 2020
AIR QUALITY
CONTOURS

YOUR LONDON AIRPORT
Gatwick



DORKING

REIGATE

HORLEY

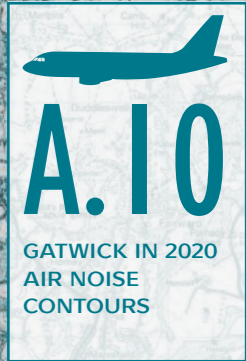
EAST GRINSTEAD

CRAWLEY

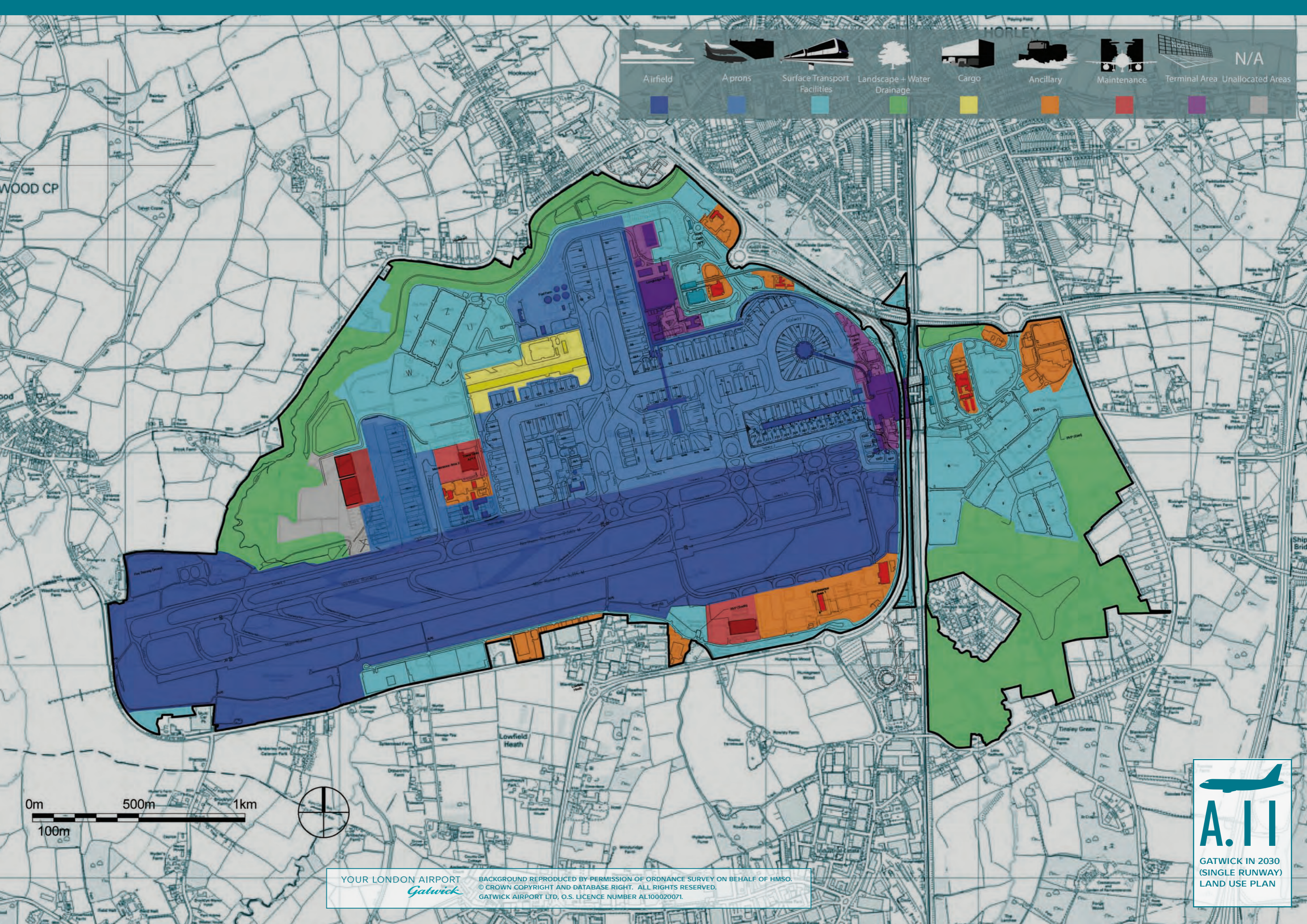
HORSHAM



YOUR LONDON AIRPORT *Gatwick*
BACKGROUND REPRODUCED BY PERMISSION OF ORDNANCE SURVEY ON BEHALF OF HMSO.
© CROWN COPYRIGHT AND DATABASE RIGHT. ALL RIGHTS RESERVED.
GATWICK AIRPORT LTD, O.S. LICENCE NUMBER AL100020071.



YOUR LONDON AIRPORT
Gatwick

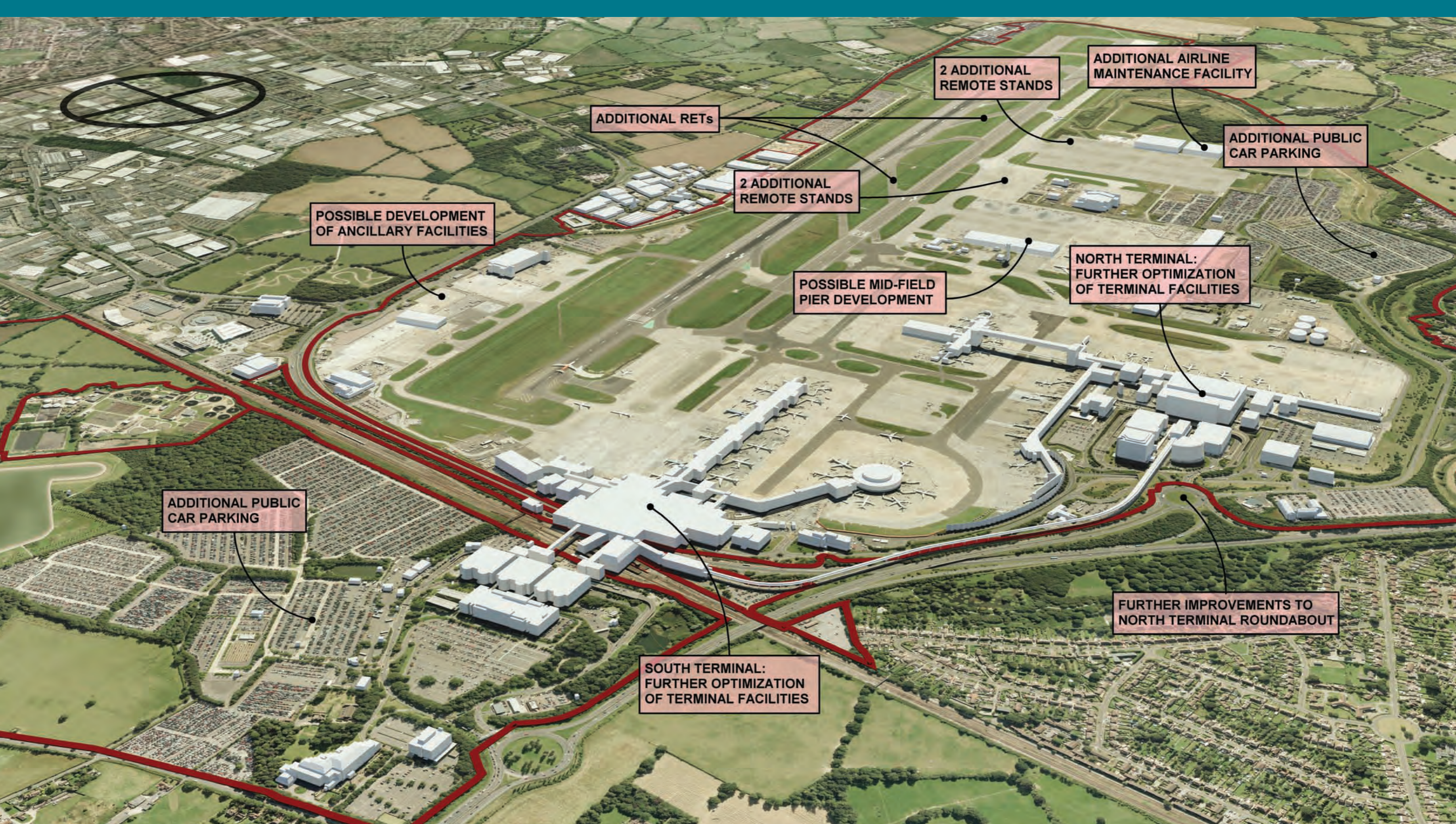


YOUR LONDON AIRPORT
Gatwick

BACKGROUND REPRODUCED BY PERMISSION OF ORDNANCE SURVEY ON BEHALF OF HMSO.
 © CROWN COPYRIGHT AND DATABASE RIGHT. ALL RIGHTS RESERVED.
 GATWICK AIRPORT LTD, O.S. LICENCE NUMBER AL100020071.

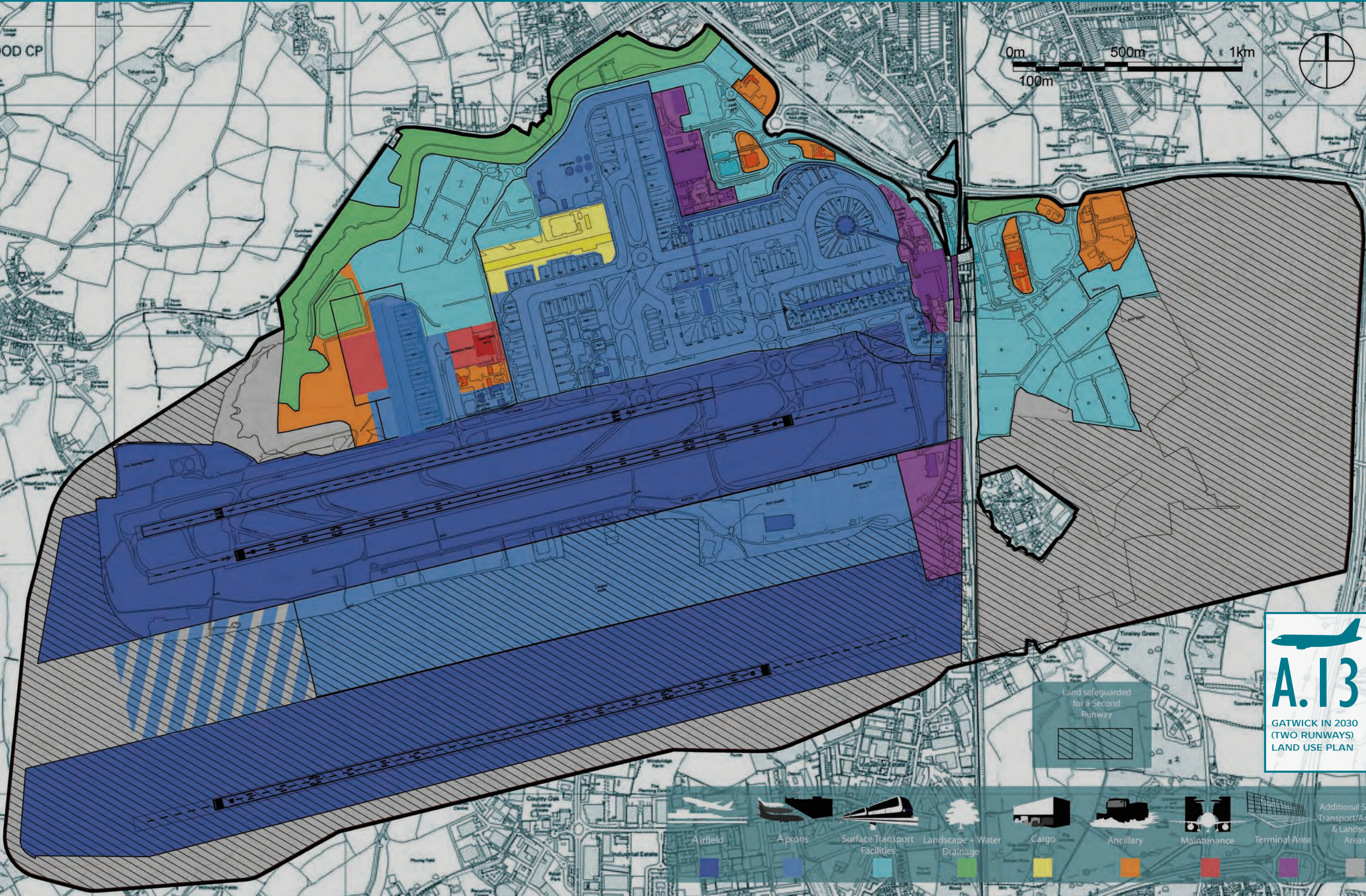


YOUR LONDON AIRPORT
Gatwick



YOUR LONDON AIRPORT
Gatwick

WOOD CP

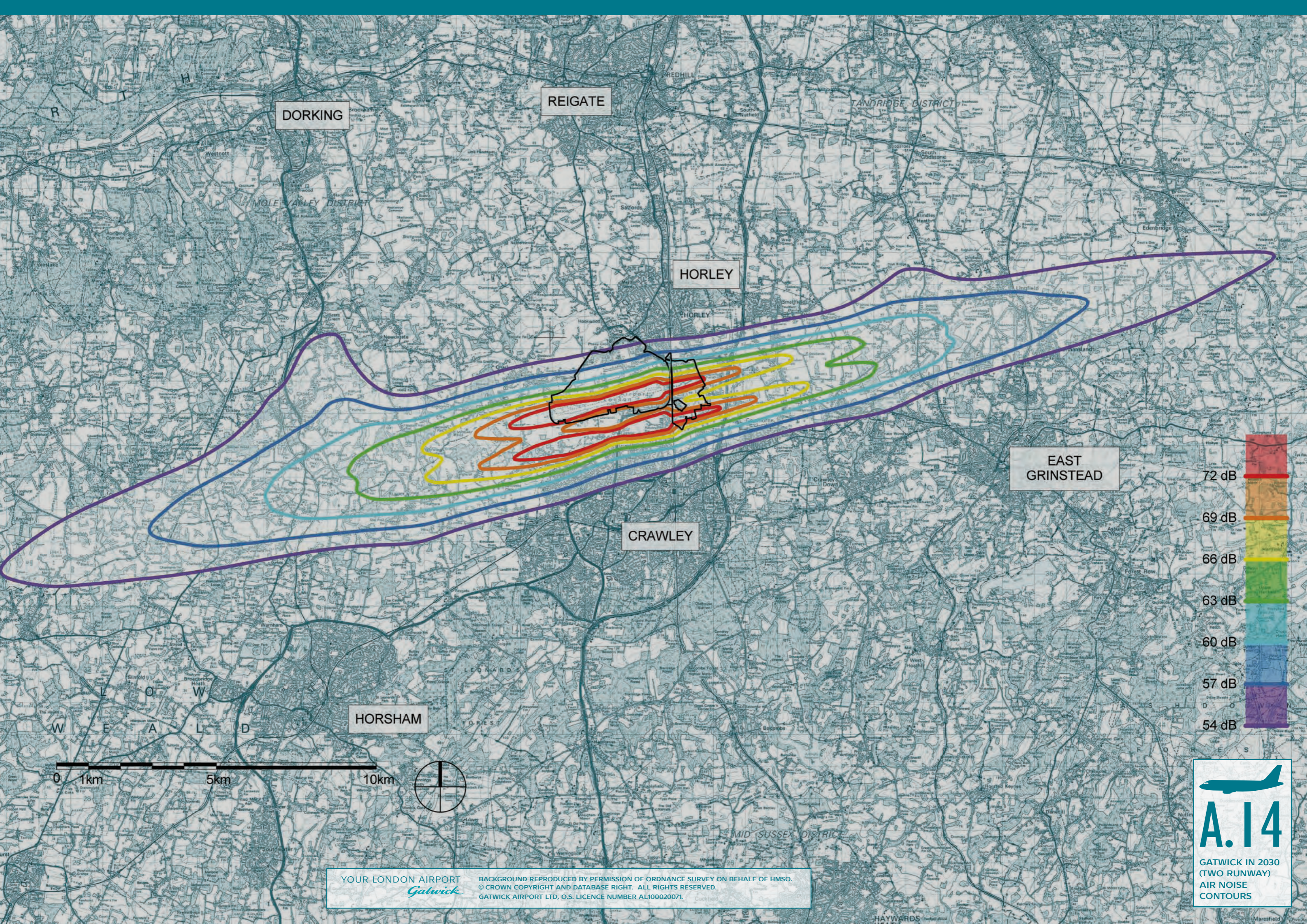


A.13
GATWICK IN 2030
(TWO RUNWAYS)
LAND USE PLAN

Land safeguarded
for a Second
Runway

- Airfield
- Aprons
- Surface Transport Facilities
- Landscape + Water Drainage
- Cargo
- Ancillary
- Maintenance
- Terminal Area
- Additional Surface Transport/Ancillary & Landscape Areas

YOUR LONDON AIRPORT
Gatwick



DORKING

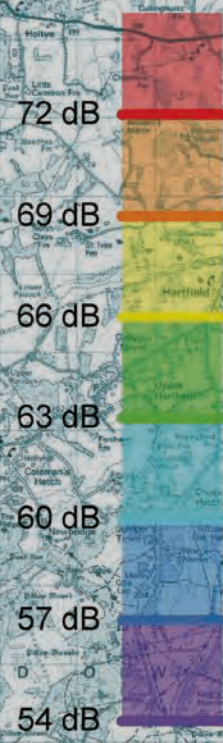
REIGATE

HORLEY

CRAWLEY

EAST GRINSTEAD

HORSHAM

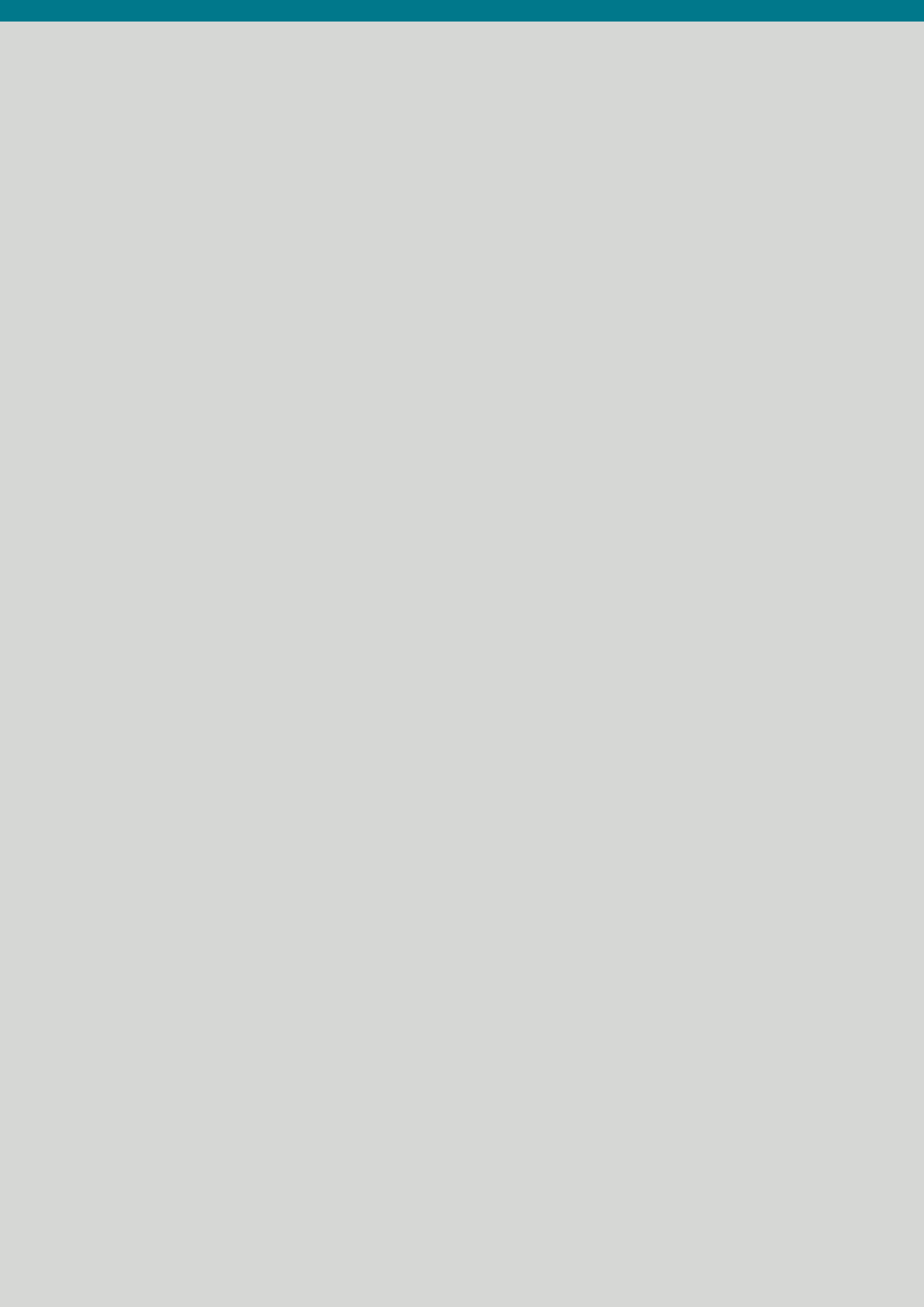


YOUR LONDON AIRPORT
Gatwick

BACKGROUND REPRODUCED BY PERMISSION OF ORDNANCE SURVEY ON BEHALF OF HMSO.
© CROWN COPYRIGHT AND DATABASE RIGHT. ALL RIGHTS RESERVED.
GATWICK AIRPORT LTD, O.S. LICENCE NUMBER AL100020071.

A.14
GATWICK IN 2030
(TWO RUNWAY)
AIR NOISE
CONTOURS

YOUR LONDON AIRPORT
Gatwick



B

Appendix B - Details of those providing written responses to the consultation



Key:

Individual

Organisation

Website post

Letters

-
- AIPUT (Airport Industrial Property Unit Trust)
 - Andrew Gold | ROBAND
 - Andrew Sharp
 - Andy Carr
 - Bernard Tester
 - Bletchingely Parish Council
 - Charlwood Parish Council
 - Chris Barrow
 - Cowden Parish Council
 - David Evans
 - David Haselden
 - Doug Cull
 - Edmund Simmons
 - Gatwick Anti-Noise Group
 - Ian Woodland | Elementus Ltd
 - James Sheridan
 - John Dancer
 - John Myer
 - Jon Mitchell
 - Lingfield Parish Council
 - Margo Edwards
 - Mark Piper
 - Martin Needham
 - Matthew Winterman
 - Metrobus
 - Morag Richardson
 - Rachel Natarajan
 - Strutt and Parker
 - Surrey Green Party
 - Susan Denman | Springwood Guesthouse
 - Sutton & East Surrey Water
 - Terry R
 - Thomas Cook
 - West Sussex County Council
 - ABTA
 - AIPUT (Airport Industrial Property Unit Trust)
 - Billingshurst Parish Council
 - Bletchingely Parish Council
 - Capel Parish Council
 - Charlwood Parish Council
 - Charlwood Society
 - Cowden Parish Council
 - Crawley Borough Council
 - Crawley LEAG
 - Dormansland Parish Council
 - East Sussex County Council
 - Edenbridge Town Council
 - Fellbridge Parish Council
 - GACC
 - GATCOM
 - Gatwick Anti-Noise Group
 - Gatwick Could Be Quieter
 - Gatwick Diamond
 - Gatwick Green
 - Horley Town Council
 - Horne Parish Council
 - Kent County Council
 - Lingfield Parish Council
 - Mole Valley District Council
 - Ockley Parish Council
 - Reigate and Banstead Borough Council
 - Sevenoaks District Council
 - Surrey County Council
 - Surrey Green Party
 - Thomas Cook
 - West Sussex County Council

Comment cards

A

- A S Averill
- Adele Gammarano
- Adwick*
- Alan Hill
- Alan Mockridge
- Alok Jariwala
- Andrew Mitchell
- Andrew Simmans
- Andy Mitchelson
- Angela Day
- Anna Szkoda
- Ann-Marie Randell

B

- B Albrecher*
- B Jones*
- Bailey*
- Beorll*
- Brian Chatfield
- Brian Cole
- Bryan Aitken
- Butler*

C

- C A Shaw*
- C Averill*
- Cameron*
- Charlotte Newton
- Chris Hill
- Chris Paterson

- Chris Poole
- Christine Muir
- Colin Maughan
- Croxford*

D

- D Dufton*
- D P Kirby*
- Dan Gordon
- Darren Roberts
- Darren Wise
- David Baron
- David Franklin
- David Sergeant
- David Wittchell
- Davies*
- Dawn Wilkinson
- Delleie Lill
- Derek Wells
- Douglas Caldwell

E

- Edward Price
- Eric Grandey

F

- F Hawke*
- Fenn*

G

- G Edwards*
- Gannish*
- Gerald Phelan
- Gerrit Mak
- Goodall*
- Gordon Golding
- Graham Moor
- Graves*
- Greg Cope

H

- H Goodenough*
- Heather Panter

I

- Ian J Exley*
- Ian McBean
- Idliam Mares

J

- J L Williams*
- J Leach*
- J Mitchell*
- J Phelan*
- J R Voice*

- J Samways*
- J Scholey*
- J Simon*
- James F Sheridan
- James Jones
- Jean Perdreau
- Jim Buchanan
- Johanne Heckney
- Jonathan & Gordanna Poland
- June & Pete Chandler

K

- Kashaf Mirza
- Kenward*
- Kevin Bean
- Kevin Collins
- Kevin R Beatty*
- Kirsty Mitchelson

L

- L E Simmons*
- L Merrit*
- L.M Duester*
- Lambert*
- Lambert*
- Launder*
- Linda Sillence
- Linda Wittchell

M

- M Francis*
- M Martin*
- M Witchell*
- Malcolm Baker
- Marchant*
- Mark Jarvis
- Martin*
- Mary Dearth
- Meymck*
- Mike Nicholson

N

- Natalie Richards
- Neal*
- Neil Ferdinando
- Neil Monet
- Newington*
- Nick Built
- Nick Timms
- Nigel Tomsett
- Norman Webster

P

- P A Glenn*
- P Garton*
- Patricia Williams
- Paul Armstrong
- Paul Elliot
- Paul Hogland
- Paul Killingbeck

- Paul Wilson
- Pete Griffiths
- Peter Figg
- Peter O'Malley
- Philip D Sully
- Philip Norville

R

- R Barry (Mrs)*
- R W Meekins*
- Rama*
- Randall*
- Richard Bown
- Richard Flint
- Robert Bond
- Robert Evans
- Robertson*
- Rod Walker
- Roger K Swallow
- Roger Self

S

- S A Mitcheson
- S Clinton*
- S K Ojha*
- S Read*
- Sarah Godfey
- Sarah Maclenan
- Shahzad Malik
- Spratman*
- Steve Reid
- Sutcliffe*

T

- Taylor*
- Terence Panter
- Theresa Jarvis
- Tim Galagher
- Tim Hoskins
- Tony Brown
- Tony Satchell
- Tony Smalley
- Tracey Brodie
- Trevor D Gamble

V

- Victoria Turner
- Vincent*

W

- Woods*
- Woolet*

Z

- Zoe Hawkesworth

**Names unclear or incomplete on original handwritten comment card.*

In addition there were approximately 30 comment cards completed without a name given.

C

Appendix C - Glossary of Terms

A380	Airbus A380
ACDM	Airport Collaborative Decision Making
APD	Air Passenger Duty
APU	Auxiliary Power Unit
AQMA	Air Quality Management Area
ASAS	Airport Surface Access Strategy
ATM	Air Transport Movement
BAA	The former owners of Gatwick and the current owners of Heathrow and some other UK airports
CAA	Civil Aviation Authority
CAP168	CAA document 'Licensing of Aerodromes'
CATM	Cargo Air transport Movement
CBC	Crawley Borough Council
CC	Competition Commission
CIP	Capital Investment Plan
Code E	The second largest aircraft size category which includes the Boeing B747
Code F	The largest aircraft size category which includes the Airbus A380
CONTRAM	Continuous Traffic Assignment Model – the computer model we use to test road network capacity
DfT	Department for Transport
EIU	Economist Intelligence Unit
END	European Union - Environmental Noise Directive
ERCD	Environmental Research and Consultancy Department (of the CAA)
ETS	European Union - Emissions Trading Scheme
FEGP	Fixed Electrical Ground Power
FEU	Flight Evaluation Unit
FPT	Flight Performance Team
GA	General Aviation
GAL	Gatwick Airport Limited
GATCOM	Gatwick Airport Consultative Committee
Gatwick Commuter	The travel scheme for airport staff designed to encourage the use of sustainable travel options.
Gatwick Diamond	Business led private/public sector partnership promoting economic growth in a defined area between Croydon and Brighton. Part of the Coast to Capital Local Enterprise Partnership.
GDP	Gross Domestic Product
GHG	Green House Gas

GIP	Global Infrastructure Partners
GPU	Ground Power Unit
GVA	Gross Value Added
ICF SH&E	Forecasting consultants used by Gatwick Airport Limited
IMF	International Monetary Fund
MIPU	Major Infrastructure Planning Unit
mppa	Million passengers per annum
NATS	The provider of air traffic control services at Gatwick
NOx	Generic term for mono-nitrogen oxides NO and NO2
NO2	Nitrogen Dioxide
NPPF	National Planning Policy Framework
NPR	Noise Preferential Route
North West Zone	An area of the airport lying to the south of the River Mole, where it runs north of the runway.
NT	North Terminal
OBR	Office for Budget responsibility
ONS	Office for National Statistics
Optimal Economics	Economic benefit and employment consultants used by Gatwick Airport Limited
PATM	Passenger Air Transport Movement
PRM	Passengers with Reduced Mobility
PSZ	Public Safety Zone
Public Transport Mode share	The proportion of total non-transfer passengers using either rail or bus/coach services to travel to and from the airport.
Q5	The fifth (and current) regulatory quinquennium
RBBC	Reigate and Banstead Borough Council
RET	Rapid Exit Taxiway
RUS	Route Utilisation Strategy (relating to rail services)
SEAT	South East Airports Task Force
Shuttle	The automated passenger transfer system between North and South Terminals
ST	South Terminal
Stand	Aircraft parking position on the apron
S106 Legal Agreement	2008 Section 106 legal agreement between Gatwick Airport, West Sussex County Council and Crawley Borough Council
WSCC	West Sussex County Council
2003 ATWP	Air Transport White Paper – The Future of Air Transport
08R/26L	The primary runway at Gatwick
08L/26R	The standby runway at Gatwick

YOUR LONDON AIRPORT
Gatwick

GATWICK AIRPORT

West Sussex RH6 0NP

T +44 (0) 844 335 1802

E info@gatwickairport.com

www.gatwickairport.com

This publication of this report supports our decade of change. We've used a recycled paper containing 50% recycled waste and 50% virgin fibre and manufactured in a mill certified with ISO 14001 environmental management standard. We've also used a local design agency and a local printing firm to produce this report.