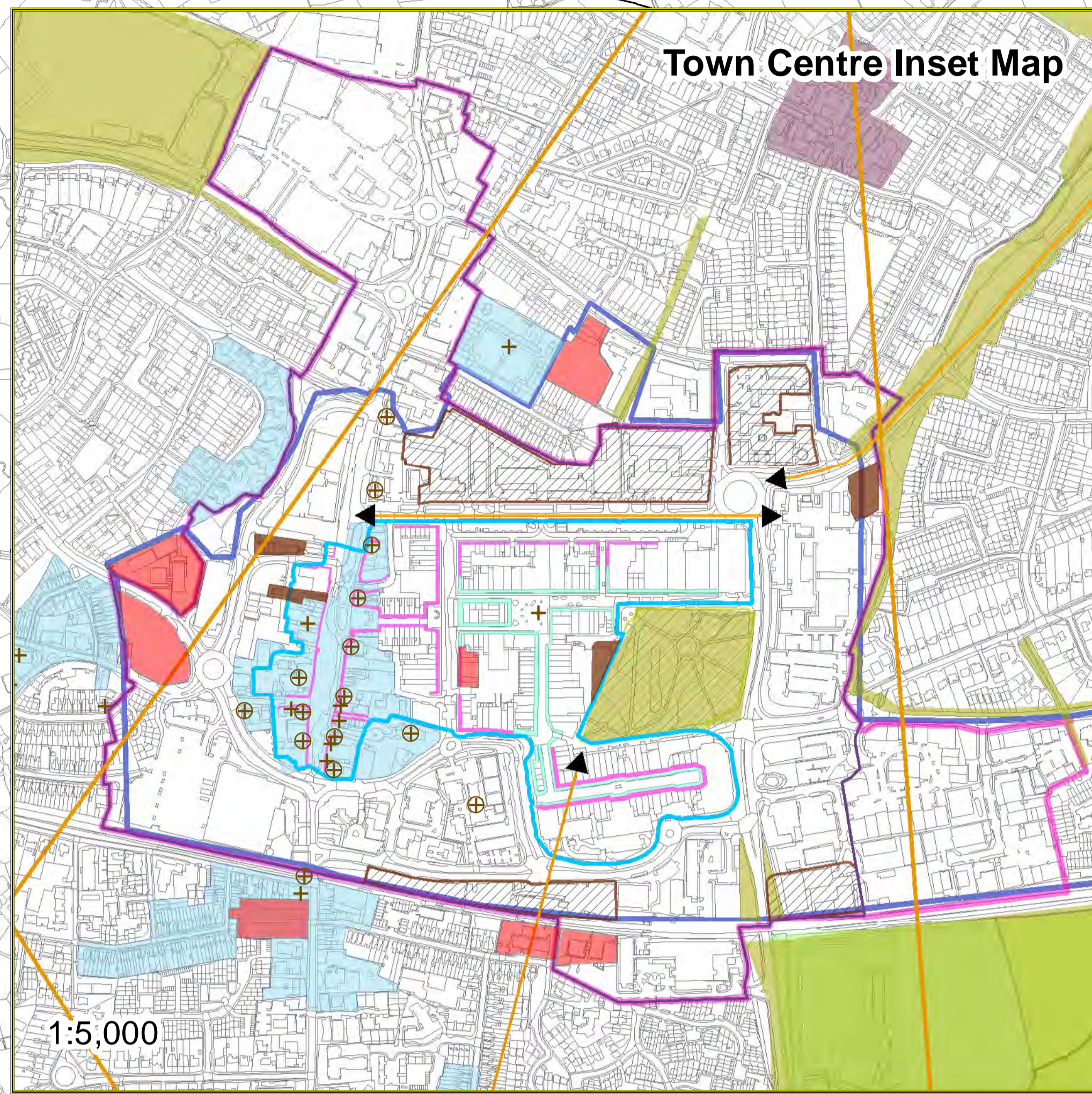
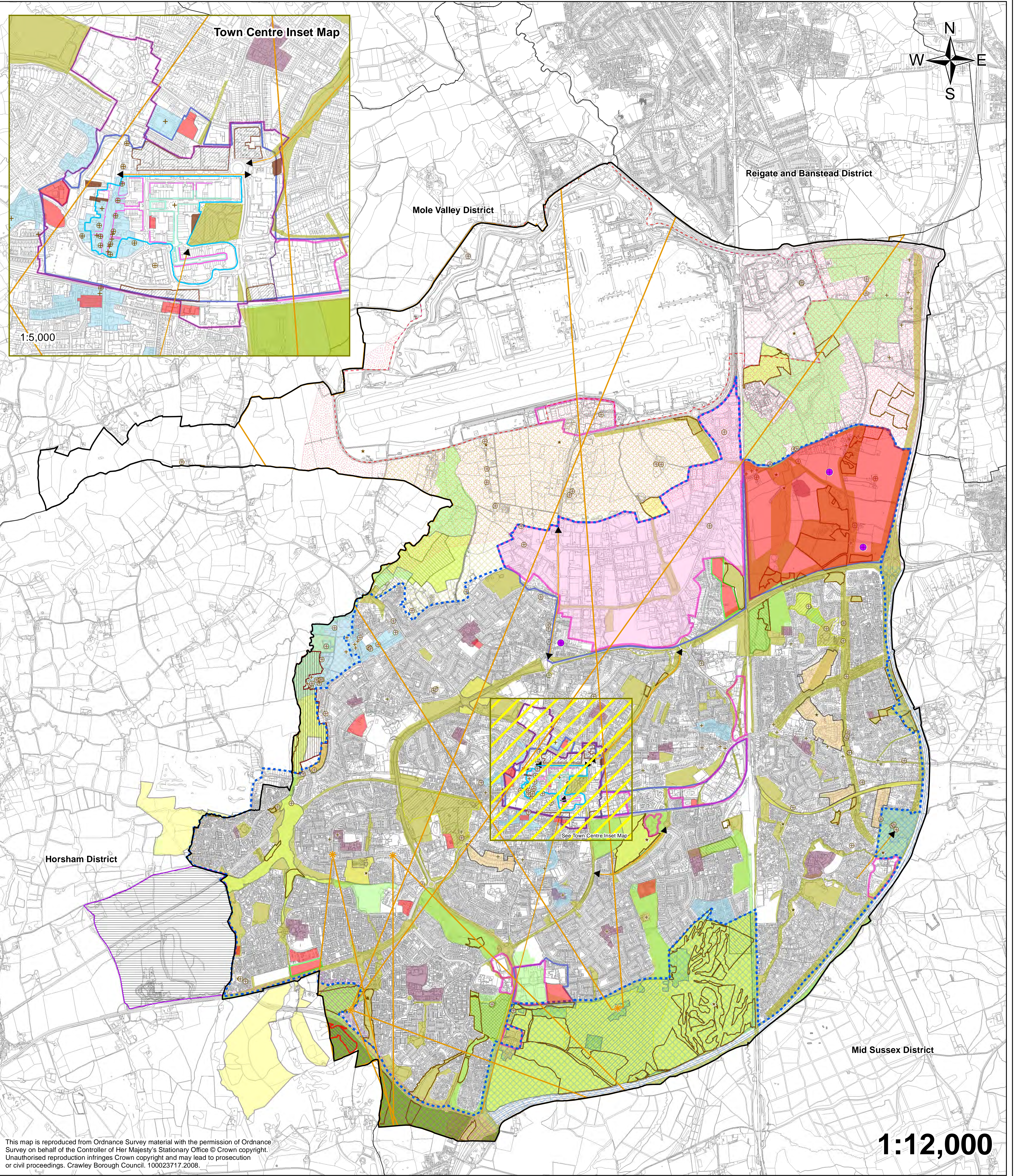


Crawley₂₀₃₀ Local Plan Map



- | | | | |
|---|--|--|--|
| <ul style="list-style-type: none"> Administrative Boundaries Structural Landscaping (Policy CH7) Long Distance Viewpoint (Policy CH8) Long Distance View Splay Policy CH8 Linear Contained Views (Policy CH8) Built-Up Area Boundary (Policy CH9 & EC9) Bewbush Rural Fringe (Policy CH9) North East Crawley Rural Fringe (Policy CH9) South of Broadfield Rural Fringe (Policy CH9) Tilgate/Worth Forest Rural Fringe (Policy CH9) Upper Mole Farmlands Rural Fringe (Policy CH9) West of Ifield Rural Fringe (Policy CH9) | <ul style="list-style-type: none"> High Weald Area of Outstanding Natural Beauty (Policy CH10) Archaeologically Sensitive Areas (Policy CH12) Scheduled Ancient Monuments (Policy CH12) Listed Buildings (Policy CH12 & CH15) Locally Listed Buildings (Policy CH12 & CH16) Conservation Areas (Policy CH12 & CH13) Areas of Special Local Character (Policy CH12 & CH14) Historic Parks & Gardens (Policy CH12 & CH17) Main Employment Area (Policy EC2) Manor Royal (Policy EC3) Neighbourhood Centre (Policy EC8) Town Centre Boundary (Policy EC5, EC6, EC7, H2) | <ul style="list-style-type: none"> Primary Shopping Area (Policy EC5) Primary Shopping Frontage (Policy EC5) Secondary Shopping Frontage (Policy EC5) Broad Housing Locations (Policy H2) Key Housing Sites (Policy H2) Housing and Open Space (Policy H2) Town Centre and Edge-of-Centre Development Sites (Policy EC6) Key Opportunity Sites Within Town Centre Boundary (Policy EC6, H2) Gypsy, Traveller & Travelling Showpeople Site (Policy H5) Kilnwood Vale (Joint Area Action Plan) | <ul style="list-style-type: none"> Biodiversity Opportunity Areas (Policy ENV1 & ENV2) Local Nature Reserves (Policy ENV2) Site of Nature Conservation Importance (Policy ENV2) Ancient Woodland (Policy ENV2) Local Green Space (Policy ENV3) Priority Areas for District Energy Networks (Policy ENV7) Gatwick Airport Boundary (Policy GAT1, GAT3, & GAT4) Gatwick Safeguarded Land (Policy GAT2) |
|---|--|--|--|



This map is reproduced from Ordnance Survey material with the permission of Ordnance Survey on behalf of the Controller of Her Majesty's Stationary Office © Crown copyright. Unauthorised reproduction infringes Crown copyright and may lead to prosecution or civil proceedings. Crawley Borough Council. 100023717.2008.

1:12,000