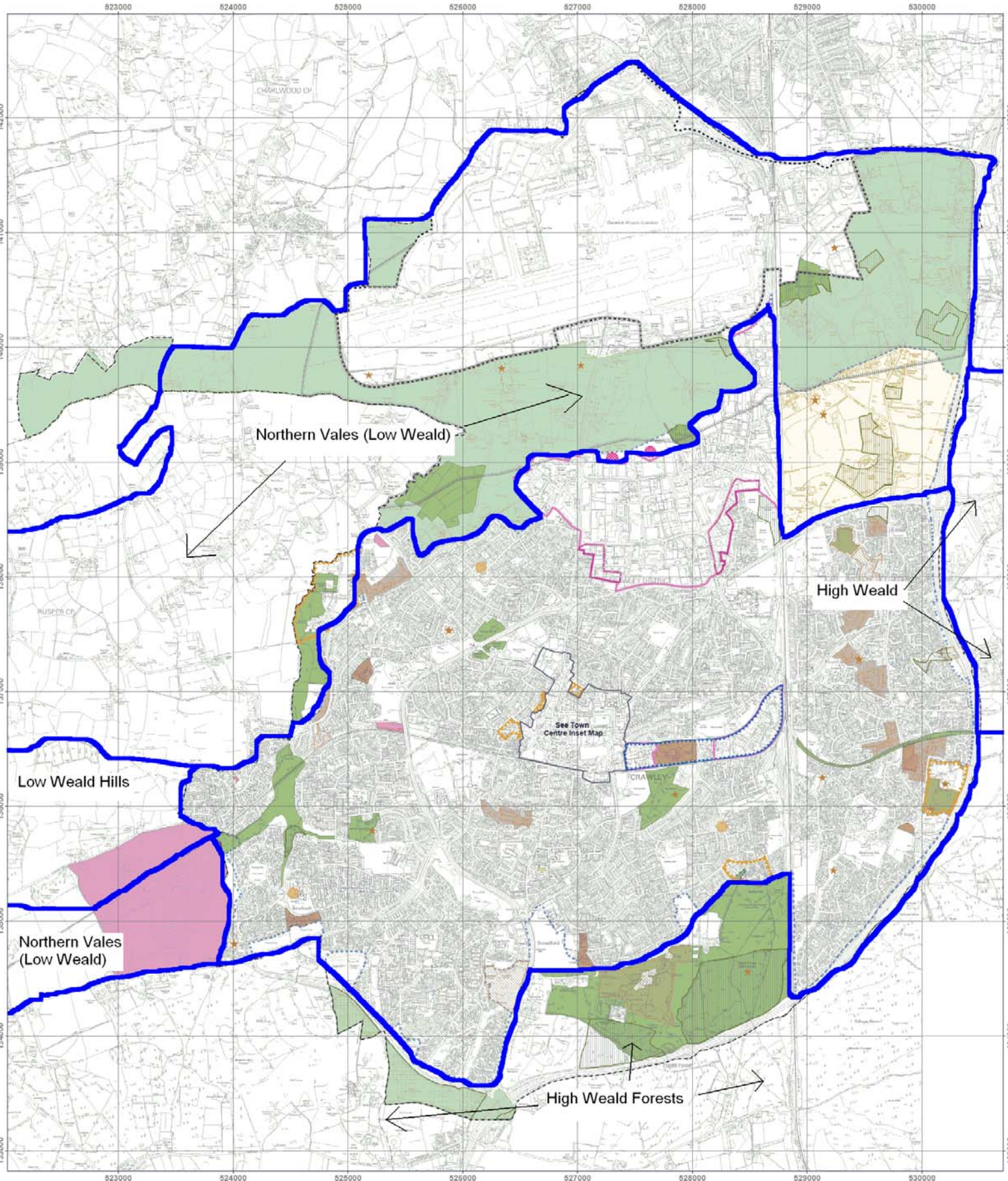


# West Sussex Landscape Character Areas

**LEGEND**

<p><b>Borough Boundary</b></p> <p>— Borough Boundary</p> <p><b>Environment</b></p> <p>★ Archaeologically Sensitive Areas (Core Strategy EN5)</p> <p>★ Scheduled Ancient Monuments (Core Strategy EN5)</p> <p>■ Ancient Woodland (Core Strategy EN1)</p> <p>■ Area of Outstanding Natural Beauty (Core Strategy EN1)</p> <p>■ Areas of Special Environmental Quality (Core Strategy EN5)</p> <p>■ Conservation Areas (Core Strategy EN5)</p> <p>■ Site of Nature Conservation Importance (Core Strategy EN1)</p> <p>■ Historic Gardens (Core Strategy EN5)</p>	<p><b>Economy</b></p> <p>■ Employment Opportunity Area (Core Strategy C1)</p> <p>■ Main Employment Areas</p> <p>■ Manor Royal Buffer Zones (Saved Local Plan Policy E15)</p> <p>■ Three Bridges Sector</p> <p>■ Three Bridges Corridor (Core Strategy TCB1 &amp; TCB2)</p> <p>■ The Countryside</p> <p>■ Built-Up Area Boundary (Core Strategy C1)</p> <p>■ Strategic Gap (Core Strategy C2)</p> <p>■ West Sussex Minerals Local Plan 2003</p> <p>■ Safeguarded Site - Existing Rail Depots</p> <p>■ North East Sector</p> <p>■ North East Sector (Core Strategy NES1 + NES2)</p>	<p><b>Community Services</b></p> <p>■ Community Services (Saved Local Plan Policies COM3 (3), COM 3(6) and COM4)</p> <p>■ Recreation &amp; Leisure (Saved Local Plan Policy RL9)</p> <p>■ West of Bewbush</p> <p>■ West of Bewbush Joint Area Action Plan (WB1 and WB2)</p> <p><b>Development Opportunities</b></p> <p>● Neighbourhood Centre Renewal (Core Strategy NS2)</p> <p>■ Strategic Housing Development Opportunity Sites (Core Strategy H2)</p> <p>■ Gatwick Airport</p> <p>■ Gatwick Airport Boundary (Core Strategy G1)</p> <p>■ Gatwick Safeguarding (Core Strategy G2)</p>
---	---	--



This map is reproduced from Ordnance Survey material with the permission of Ordnance Survey on behalf of the Controller of Her Majesty's Stationary Office © Crown copyright. Unauthorised reproduction infringes Crown copyright and may lead to prosecution or civil proceedings. Crawley Borough Council. 100023717.2008.