

**THREE BRIDGES
FORUM**

THREE BRIDGES LANDSCAPE HERITAGE TRAIL 1842 - 2012

A four mile circuit on footpaths, pavements and grass.

Follow the route shown in yellow and refer to the location notes for a flavour of the diverse urban landscape of today's Three Bridges Neighbourhood.

Compare the present day scene with the same location in the 1842 landscape of farms, fields, woods and ponds, and discover what remains.

Prepared for Three Bridges Forum (see overleaf for contact) by John Cooban CMLI M.Arbor.A

Printed with the aid of a grant from WSCC Community Initiative Fund.



24
Wild Service Tree foliage



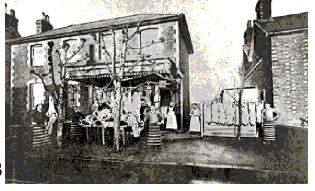
15
Old boundary oaks, Pond Wood Road



19
Scout hut oak, about 170 years old when felled in 2011.



14
Hazelwick Grange



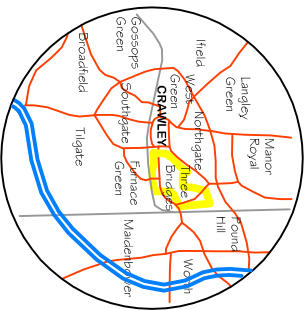
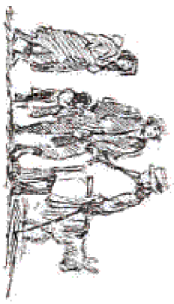
3
Pollard Lime trees in 1910 (WSCC County Library Service collection)

2012	Location Note	
	Footpath. Oak trees on old boundary to left.	1
	The Plough (rebuilt 1930 on site of earlier inn).	2
	Pollard lime trees - same ones as in a 1910 photo.	3
	Barclays Bank: former lodge at parkland drive to Tilgate estate.	4
	Gatwick Stream emerges from long culvert under road.	5
	New footbridge. Path follows natural meanders of stream.	6
	Hazelwick Avenue tree belt marks course of old mill stream.	7
	Low earth bank of former pond 'bay' on left where path enters trees.	8
	Tennis Club and Scout HQ.	9
	Tesco petrol station / car park. 1980s	10
	Two lane road curves to narrow arch around back of petrol station.	11
	Recent mixed native species hedge inside school fence.	12
	Footpath at edge of Tesco car park.	13
	Hazelwick Grange - half timbered Listed Building. Old oaks nearby.	14
	Pond Wood Road. New Town housing close to old boundary oaks.	15
	Rye Ash. Open space including trees retained from old woodland.	16
	North Road: pre-New Town ribbon development, intermittent oaks.	17
	School Lane' footpath by boundary oaks. School dates from 1934.	18
	Large old oak damaged by 1980s fire at scout hut. (Tree removed 2011)	19
	New Town - 1950s - Three Bridges Neighbourhood Centre.	20
	Farm Close. 1950s housing. Old boundary oaks retained.	21
	Crossways Close / Punch Copse Road. Woodland retained.	22
	Early Commons / Northgate Ave - New Town road 'parkway' planting.	23
	Northgate Ave. Wild service tree at end of terrace, Crawters Close.	24
	Gales Drive - false acacia trees.	25
	Pathway back of college. New Town era balsam poplars and older trees.	26
	Three Bridges Road - old trees associated with old road.	27
	Old tree-lined footpath parallel to Rowan Close.	28
	Commonwealth Drive / Pembroke Park, commenced c2006.	29
	Hawth Avenue, Russell Way and Beverley Mews.	30
	Victorian era Tilgate Drive (now cycleway) via railway bridge.	31

THREE BRIDGES 1842

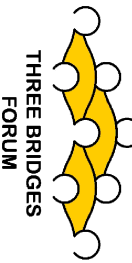
A plan of part of Three Bridges, based on the Worth (West) Tithing Map (West Sussex Record Office).

The route following the present day paths and street plan (over the page) is superimposed. Notes for the same locations refer to the scene interpreted from the 1842 map.



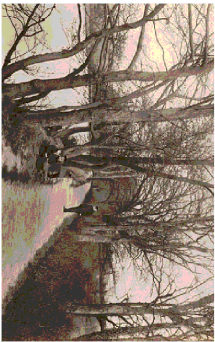
TRAIL LOCATION

Prepared by John Cochran CMLL M.Arbor.A
for

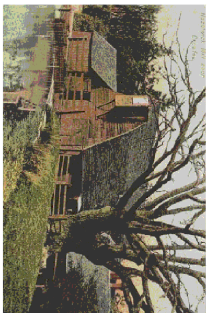


Current information and contact details:
Tel 01 293 438565 (Crawley Borough Council)
Email vikj.jacobs@bcrawley.gov.uk
Web www.threebridgesforum.wordpress.com

Printed with the aid of a grant from
WSCC Community Initiative Fund.



9
Hazelwick Mill Pond and path in 1905
(WSCC County Library Service Collection)



11
Hazelwick Mill in 1895
(WSCC County Library Service Collection)



Location Note	1842
1	Route to Turners Farm and Tiltgate
2	Original 'Three Bridges' settlement - 4 dwellings at crossroads.
3	Last house for 1/2 mile to east
4	Field names 'Brick Field' on left, 'Three Bridge Field' on right
5	3 bridges carry the road over main stream and tributaries.
6	Three gates direct flow to mill stream running left (west).
7	Field name 'Thood Gate Head'
8	Path across mill pond.
9	Path runs between mill pond on left and main stream on right.
10	The mill stream flows into the opposite (west) side of the mill pond.
11	Hazelwick Mill at end of mill pond Lane runs through to Worth Park.
12	Field name 'Pond Field' (1873 OS map shows 'Cropet Ground')
13	Hazelwick Farm field name 'Five Acres'.
14	Hazelwick Farm house. Field name 'Kiln Field' north side of lane.
15	Field name 'Goose Field'.
16	Field name 'Purse Field'. ('Purse' - goose gown / cart for cattle fodder.)
17	Old route. One or two isolated dwellings and rustic gardens.
18	Lane to Scallows Farm. Three Bridges 'Cropet' (woodland) to south.
19	Slows, pond, lane and boundaries near Scallows Farm.
20	Field names 'Rainbow Field' 'Long Field'.
21	Path to Scallows Farm
22	Scallows Farm - house, garden, barns and yard
23	Puns 'Bough' (With Puns Wood becomes 'Punch Cops' lane).
24	Woodborough Farm field name - Puns Pond Field.
25	Edges of shaw (narrow woodland) along Crawers Brook.
26	Field names 'Eight Acres' and 'Thousand Acres' (?)
27	Brook, shaw and 'Grub Plat' field name
28	Field names 'Three Six Acres' on left and 'Spears Field' on right
29	Lane to Priory Farm. Lane Field on left and 'Pond Field' on right
30	Priory Farm house, garden, barns and surrounding fields.
31	Old road south via New Barn. Field names 'Rye Ash', 'Ow Pound', 'Field names 'Early Commons', 'Cobber Hole Field', 'Crackling Field'.