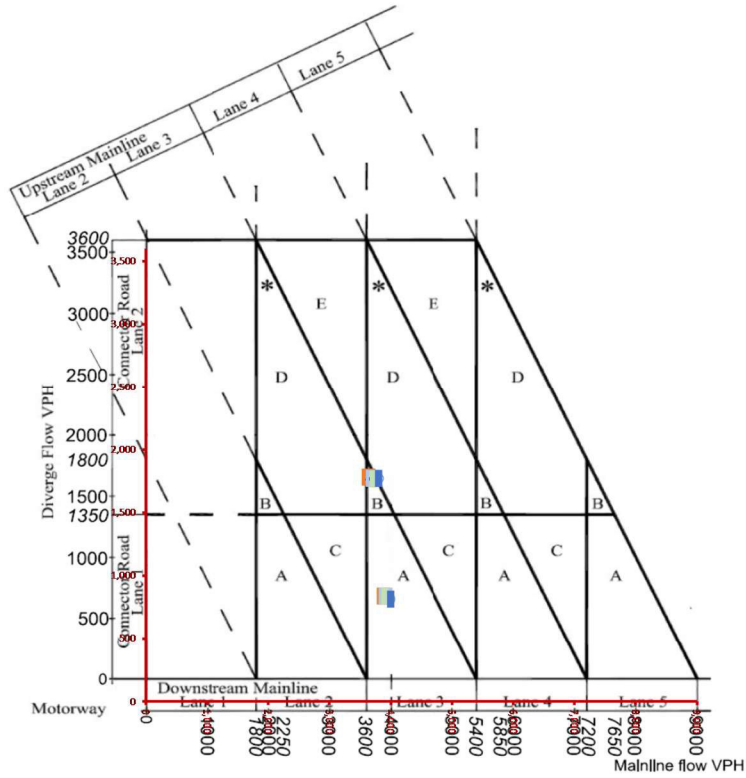


Appendix M-1: M23 J9 Southbound Diverge

M23 Junction 9 Southbound Diverge

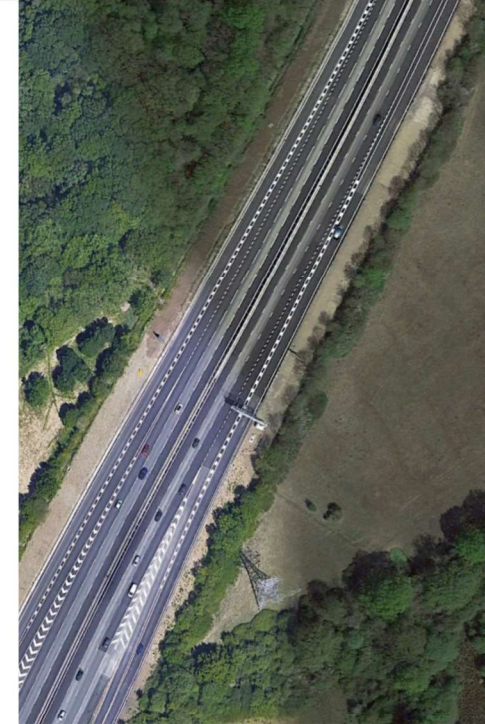


CD122 - Figure 3.26b Motorway diverging diagram

Scenario	Downstream Mainline	Diverge Flow
A	AM Reference	3,638
B	PM Reference	3,877
C	AM Local Plan 1	3,702
D	PM Local Plan 1	3,913
E	AM Local Plan 2	3,716
F	PM Local Plan 2	3,905
G	AM Local Plan 3	3,802
H	PM Local Plan 3	3,997
I		
J		

Output Summary

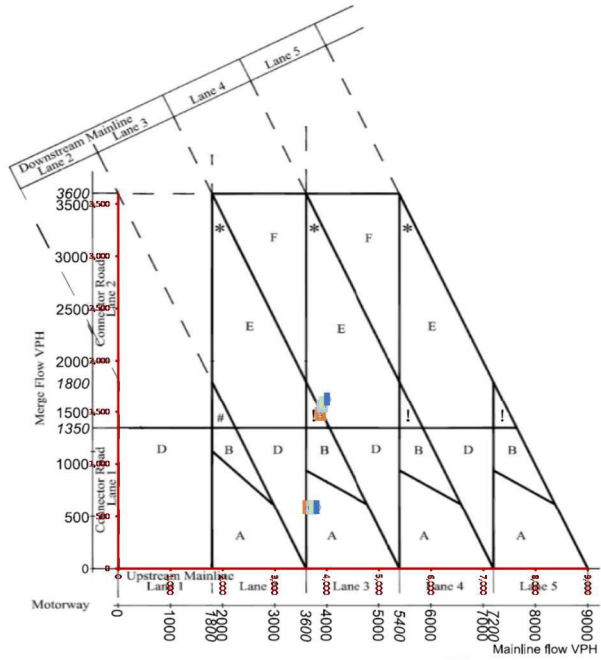
Scenario	Merge Layouts		Upstream Mainline Lanes	Downstream Mainline Lanes	Connector Road Lanes
	AM	PM			
Current Layout	D	D	4	3	2
Reference Case	D	A	4	3	2
Local Plan 1	D	A	4	3	2
Local Plan 2	D	A	4	3	2
Local Plan 3	D	A	4	3	2



4/1 899
1000 1012

Appendix M-2: M23 J9 Southbound Merge

M23 Junction 9 Southbound Merge Crawley



CD122 - Figure 3.12b Motorway merging diagram

Scenario	Upstream Mainline	Merge Flow
A	AM Reference	3,638
B	PM Reference	3,877
C	AM Local Plan 1	3,702
D	PM Local Plan 1	3,913
E	AM Local Plan 2	3,716
F	PM Local Plan 2	3,905
G	AM Local Plan 3	3,802
H	PM Local Plan 3	3,997
I		
J		

438 44
1000 106

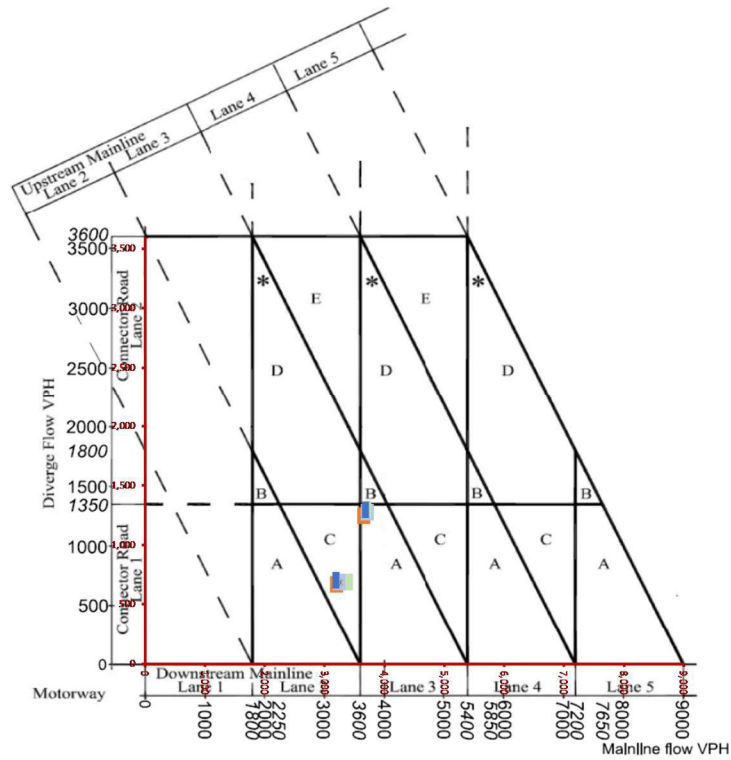
Output Summary

Scenario	Merge Layouts		Upstream Mainline Lanes	Downstream Mainline Lanes	Connector Road Lanes
	AM	PM			
Current Layout	E	E	3	4	2
Reference Case	D	E	3	3	2
Local Plan 1	D	E	3	4	2
Local Plan 2	D	E	3	4	2
Local Plan 3	D	E	3	4	2



Appendix M-3: M23 J9 Northbound Diverge

M23 Junction 9 Northbound Diverge

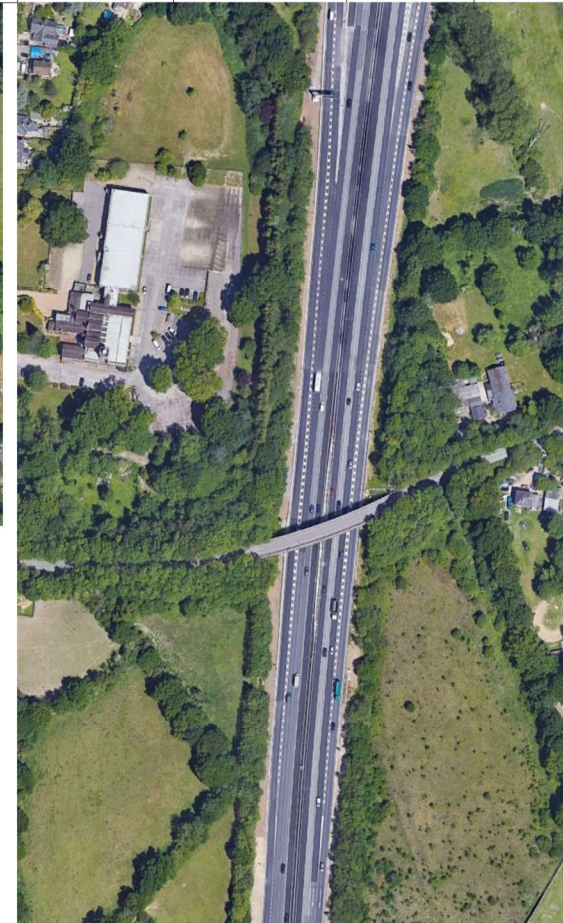
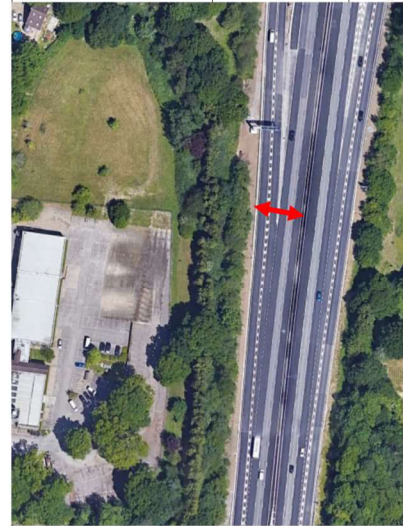


CD122 - Figure 3.26b Motorway diverging diagram

Scenario		Downstream Mainline	Diverge Flow
A	AM Reference	3,651	1,246
B	PM Reference	3,200	667
C	AM Local Plan 1	3,715	1,276
D	PM Local Plan 1	3,242	686
E	AM Local Plan 2	3,719	1,299
F	PM Local Plan 2	3,239	689
G	AM Local Plan 3	3,686	1,297
H	PM Local Plan 3	3,191	702
I			
J			

Output Summary

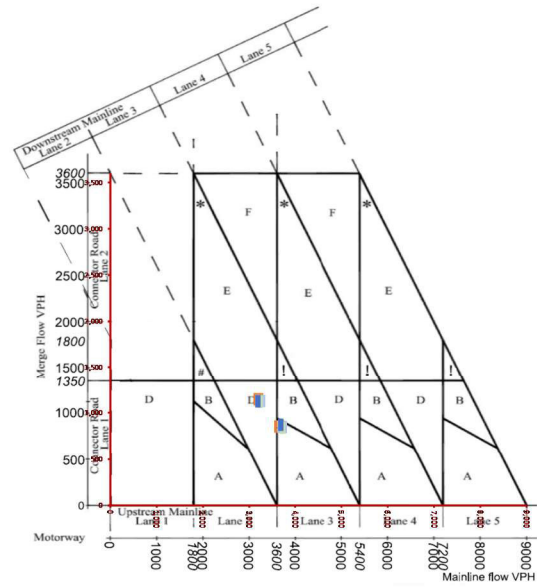
Scenario	Merge Layouts		Upstream Mainline Lanes	Downstream Mainline Lanes	Connector Road Lanes
	AM	PM			
Current Layout	D	D	3	3	2
Reference Case	A	C	3	3	1
Local Plan 1	A	C	3	3	1
Local Plan 2	A	C	3	3	1
Local Plan 3	A	C	3	3	1



45 200
1000 1000

Appendix M-4: M23 J9 Northbound Merge

M23 Junction 9 Northbound Merge:

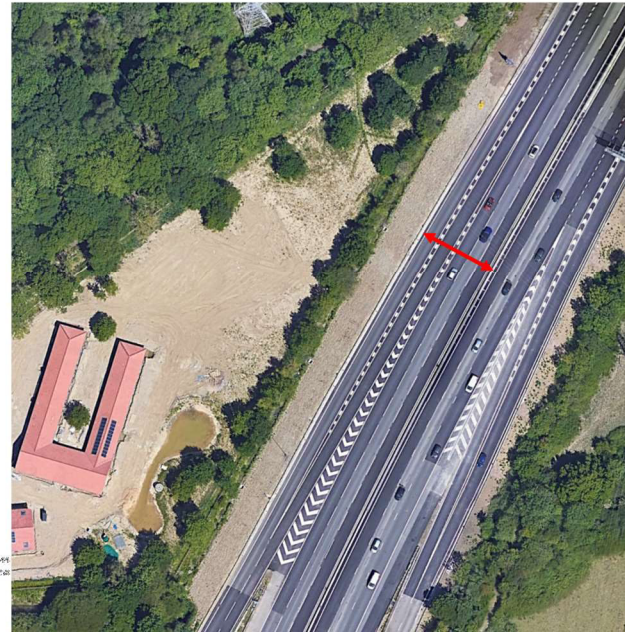


CD122 - Figure 3.12b Motorway merging diagram

Scenario	Upstream Mainline	Merge flow
A	AM Reference	3,651
B	PM Reference	3,200
C	AM Local Plan 1	3,715
D	PM Local Plan 1	3,242
E	AM Local Plan 2	3,719
F	PM Local Plan 2	3,239
G	AM Local Plan 3	3,686
H	PM Local Plan 3	3,191
I		
J		

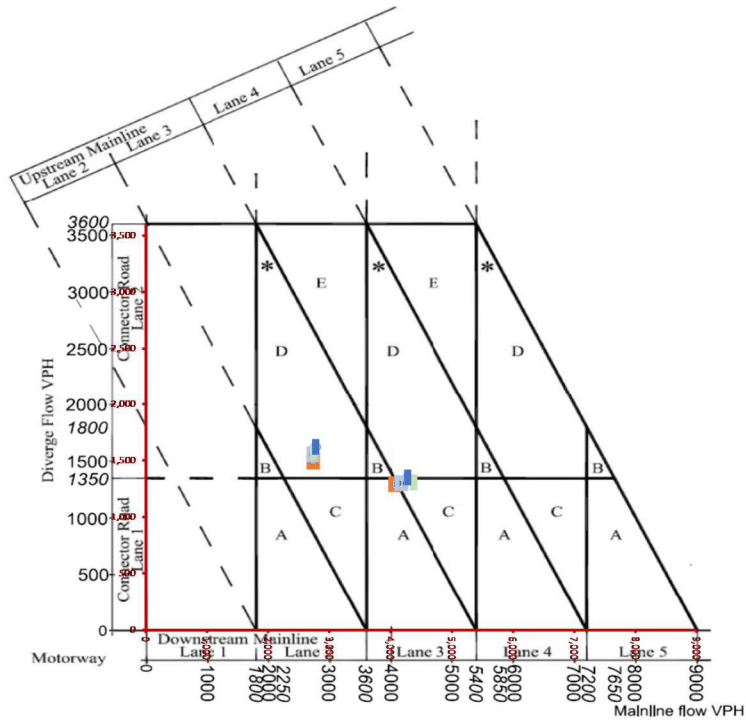
Output Summary

Scenario	Merge Layout		Upstream Mainline Lanes	Downstream Mainline Lanes	Connector Road Lanes
	AM	PM			
Current Layout	E	E	3	4	2
Reference Case	A	D	3	3	1
Local Plan 1	A	D	3	3	1
Local Plan 2	A	D	3	3	1
Local Plan 3	A	D	3	3	1



Appendix M-5: M23 J10 Southbound Diverge

M23 J10 Southbound Diverge



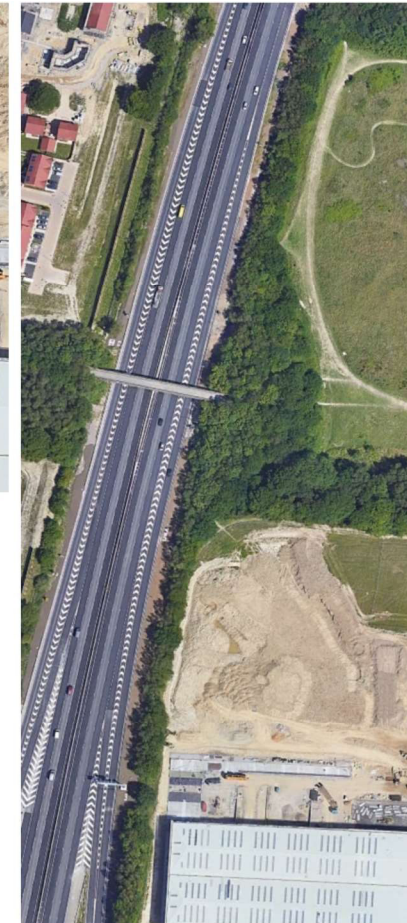
CD122 - Figure 3.26b Motorway diverging diagram

Scenario	Downstream Mainline	Diverge Flow
A AM Reference	2,736	1,489
B PM Reference	4,071	1,291
C AM Local Plan 1	2,729	1,556
D PM Local Plan 1	4,176	1,300
E AM Local Plan 2	2,734	1,570
F PM Local Plan 2	4,197	1,305
G AM Local Plan 3	2,772	1,619
H PM Local Plan 3	4,278	1,350
I		
J		

483 893
1000 2012

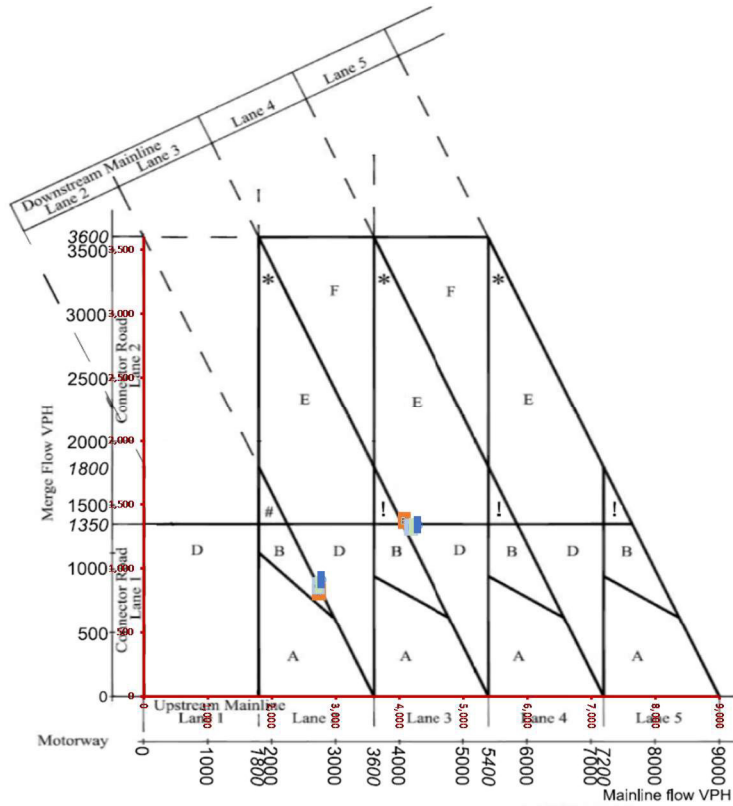
Output Summary

Scenario	Merge Layouts		Upstream Mainline Lanes	Downstream Mainline Lanes	Connector Road Lanes
	AM	PM			
Current Layout	D	D	4	3	2
Reference Case	D	A	3	3	2
Local Plan 1	D	C	4	3	2
Local Plan 2	D	C	4	3	2
Local Plan 3	D	C	4	3	2



Appendix M-6: M23 J10 Southbound Merge

M23 J10 Southbound Merge



CD122 - Figure 3.12b Motorway merging diagram

Scenario	Upstream Mainline	Merge Flow
A	AM Reference	2,736
B	PM Reference	4,071
C	AM Local Plan 1	2,729
D	PM Local Plan 1	4,176
E	AM Local Plan 2	2,734
F	PM Local Plan 2	4,197
G	AM Local Plan 3	2,772
H	PM Local Plan 3	4,278
I		
J		

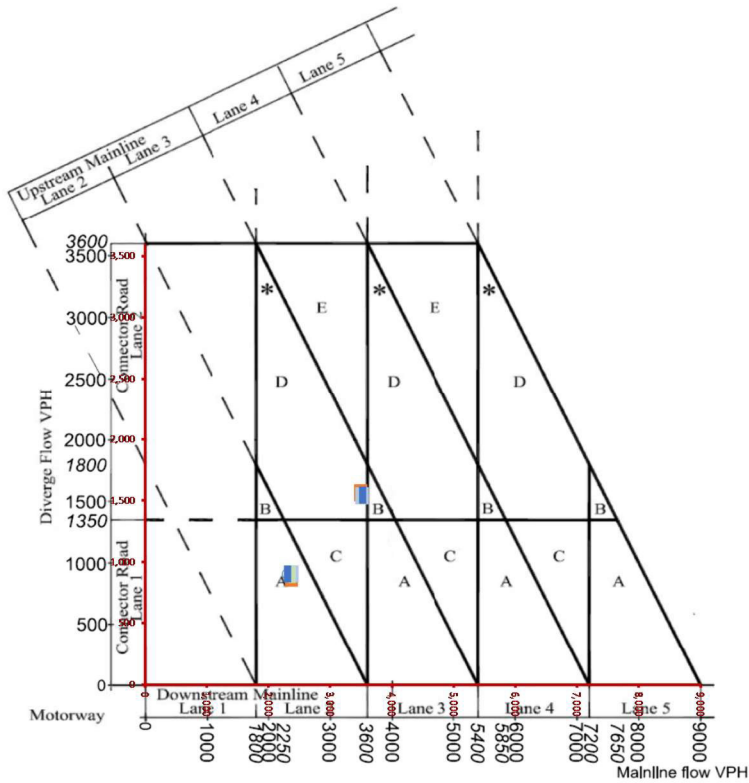
Output Summary

Scenario	Merge Layouts		Upstream Mainline Lanes	Downstream Mainline Lanes	Connector Road Lanes
	AM	PM			
Current Layout	A	A	3	3	2
Reference Case	B	E	3	4	2
Local Plan 1	B	D	3	4	2
Local Plan 2	B	D	3	4	2
Local Plan 3	B	D	3	4	2



Appendix M-7: M23 J10 Northbound Diverge

M23 Junction 10 Northbound Diverge



CD122 - Figure 3.26b Motorway diverging diagram

Scenario	Downstream Mainline	Diverge Flow
A	AM Reference	3,497
B	PM Reference	2,374
C	AM Local Plan 1	3,517
D	PM Local Plan 1	2,373
E	AM Local Plan 2	3,515
F	PM Local Plan 2	2,376
G	AM Local Plan 3	3,527
H	PM Local Plan 3	2,309
I		
J		

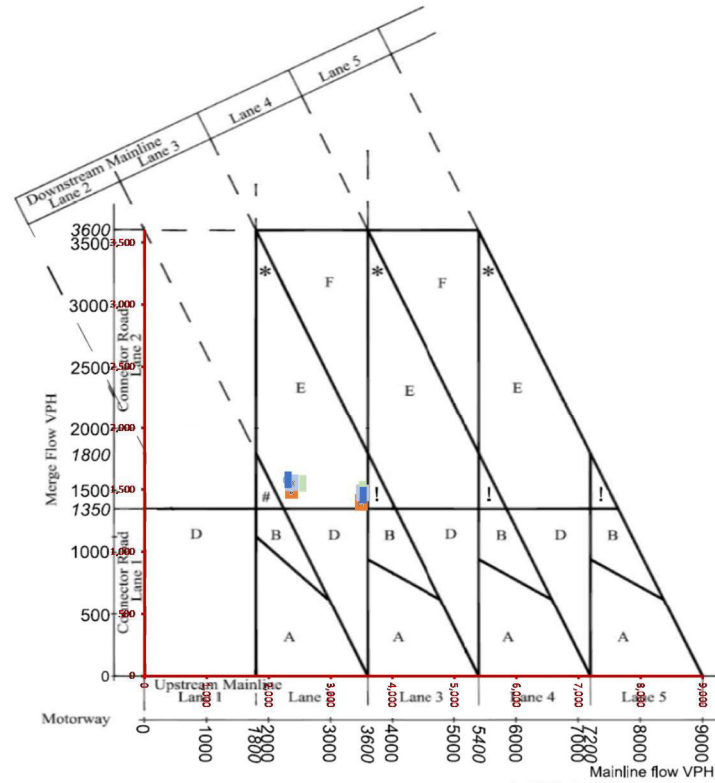
Output Summary

Scenario	Merge Layouts		Upstream Mainline Lanes	Downstream Mainline Lanes	Connector Road Lanes
	AM	PM			
Current Layout	B	B	3	3	2
Reference Case	D	A	2	3	2
Local Plan 1	D	A	2	3	2
Local Plan 2	D	A	2	3	2
Local Plan 3	D	A	2	3	2



Appendix M-8: M23 J10 Northbound Merge

M23 Junction 10 Northbound Diverge



CD122 - Figure 3.12b Motorway merging diagram

Scenario	Upstream Mainline	Merge Flow
A	AM Reference	3,497
B	PM Reference	2,374
C	AM Local Plan 1	3,517
D	PM Local Plan 1	2,373
E	AM Local Plan 2	3,515
F	PM Local Plan 2	2,376
G	AM Local Plan 3	3,527
H	PM Local Plan 3	2,309
I		
J		

411 444
1420 126

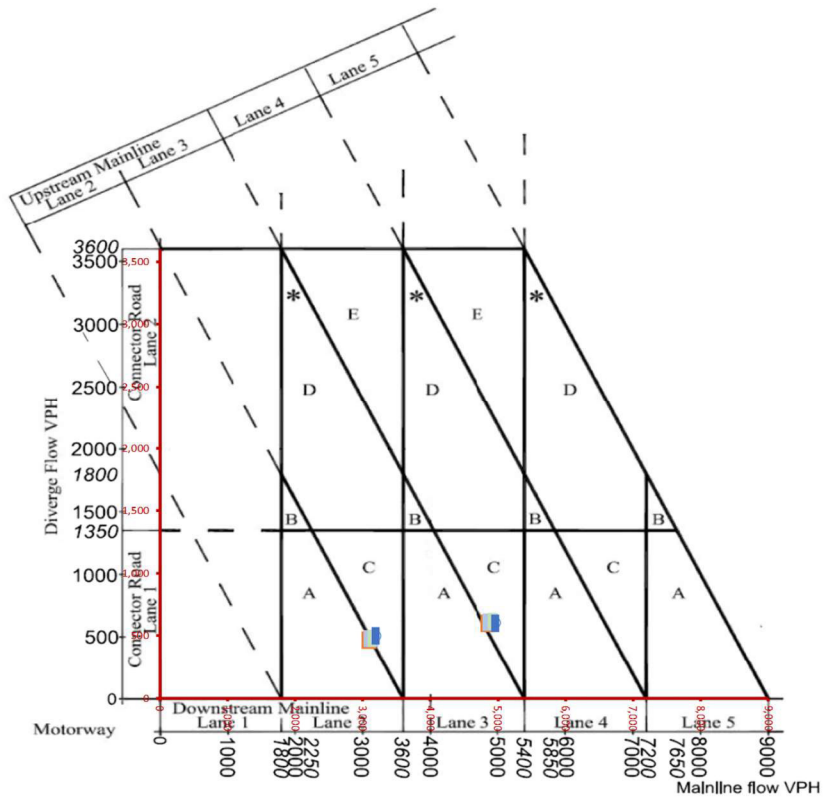
Output Summary

Scenario	Merge Layouts		Upstream Mainline Lanes	Downstream Mainline Lanes	Connector Road Lanes
	AM	PM			
Current Layout	E	E	3	4	2
Reference Case	E	E	2	3	2
Local Plan 1	E	E	2	3	2
Local Plan 2	E	E	2	3	2
Local Plan 3	E	E	2	3	2



Appendix M-9: M23 J10A Southbound Diverge

M23 Junction 10A Southbound Diverge



CD122 - Figure 3.26b Motorway diverging diagram

Scenario		Downstream Mainline	Diverge Flow
A	AM Reference	3,093	463
B	PM Reference	4,846	601
C	AM Local Plan 1	3,119	477
D	PM Local Plan 1	4,890	609
E	AM Local Plan 2	3,129	480
F	PM Local Plan 2	4,907	616
G	AM Local Plan 3	3,189	499
H	PM Local Plan 3	4,965	599
I			
J			

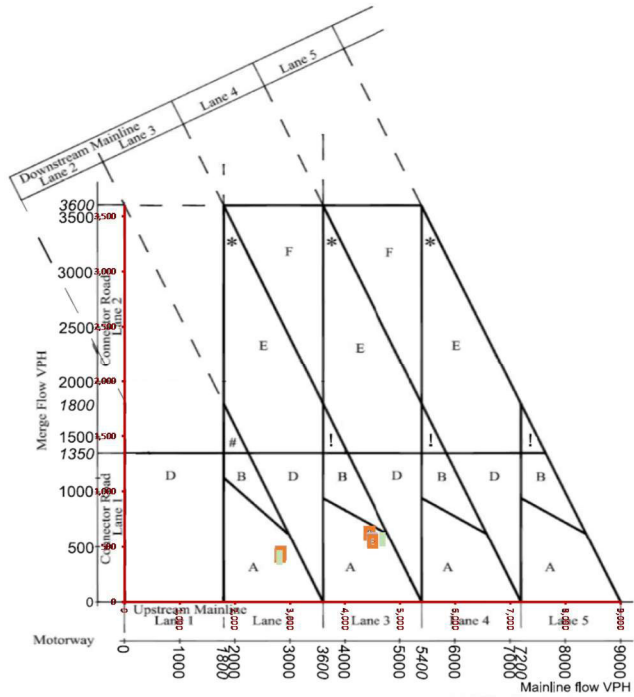
Output Summary

Scenario	Merge Layouts		Upstream Mainline Lanes	Downstream Mainline Lanes
	AM	PM		
Current Layout	B	B	3	3
Reference Case	C	C	4	3
Local Plan 1	C	C	4	3
Local Plan 2	C	C	4	3
Local Plan 3	C	C	4	3



Appendix M-10: M23 J10A Northbound Merge

M23 Junction 10 Northbound Merge

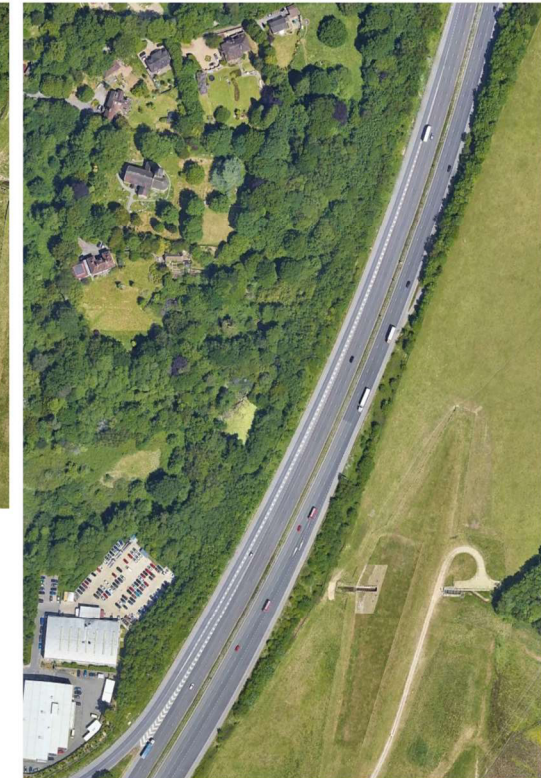
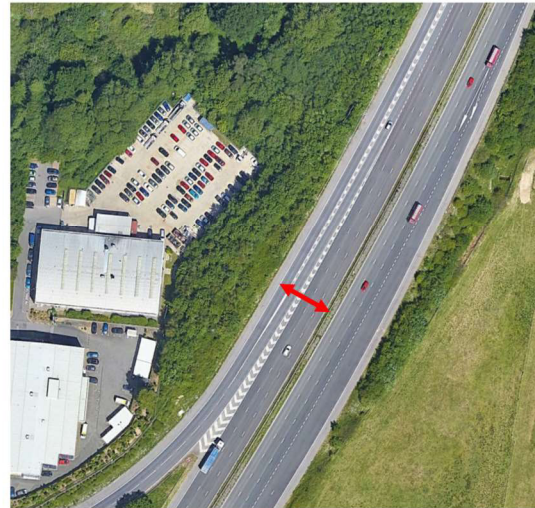


CD122 - Figure 3.12b Motorway merging diagram

Scenario	Upstream Mainline	Merge Flow
A	AM Reference	4,443
B	PM Reference	2,821
C	AM Local Plan 1	4,492
D	PM Local Plan 1	2,834
E	AM Local Plan 2	4,503
F	PM Local Plan 2	2,833
G	AM Local Plan 3	4,505
H	PM Local Plan 3	2,812
I		
J		

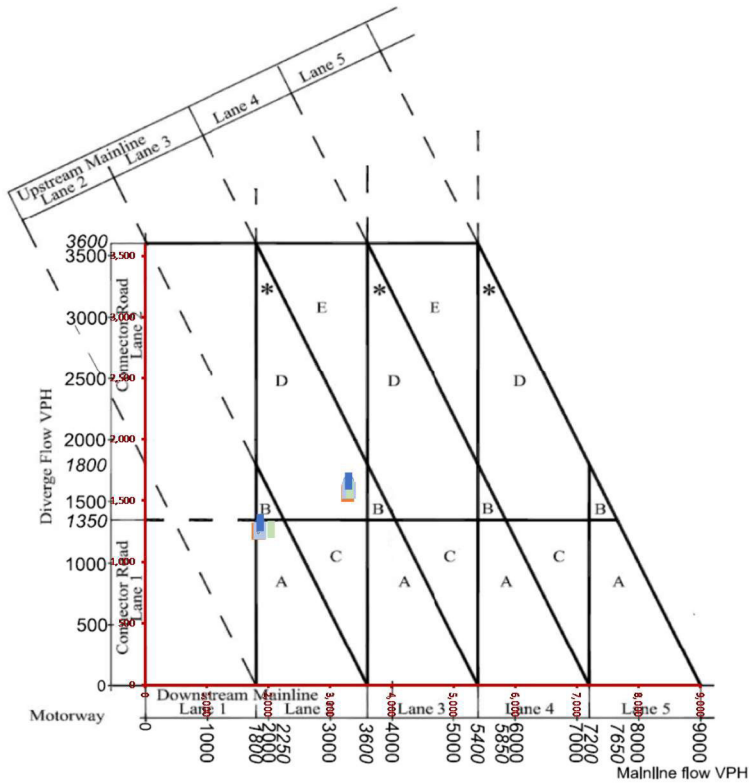
Output Summary

Scenario	Merge Layouts		Upstream Mainline Lanes	Downstream Mainline Lanes	Connector Road Lanes
	AM	PM			
Current Layout	C	C	3	3	2
Reference Case	A	A	3	3	1
Local Plan 1	A	A	3	3	1
Local Plan 2	A	A	3	3	1
Local Plan 3	A	A	3	3	1



Appendix M-11: M23 J11 Southbound Diverge

M23 Junction 11 Southbound Diverge



CD122 - Figure 3.26b Motorway diverging diagram

Scenario		Downstream Mainline	Diverge Flow
A	AM Reference	1,841	1,252
B	PM Reference	3,285	1,561
C	AM Local Plan 1	1,861	1,258
D	PM Local Plan 1	3,307	1,583
E	AM Local Plan 2	1,864	1,266
F	PM Local Plan 2	3,320	1,587
G	AM Local Plan 3	1,869	1,320
H	PM Local Plan 3	3,304	1,661

Output Summary

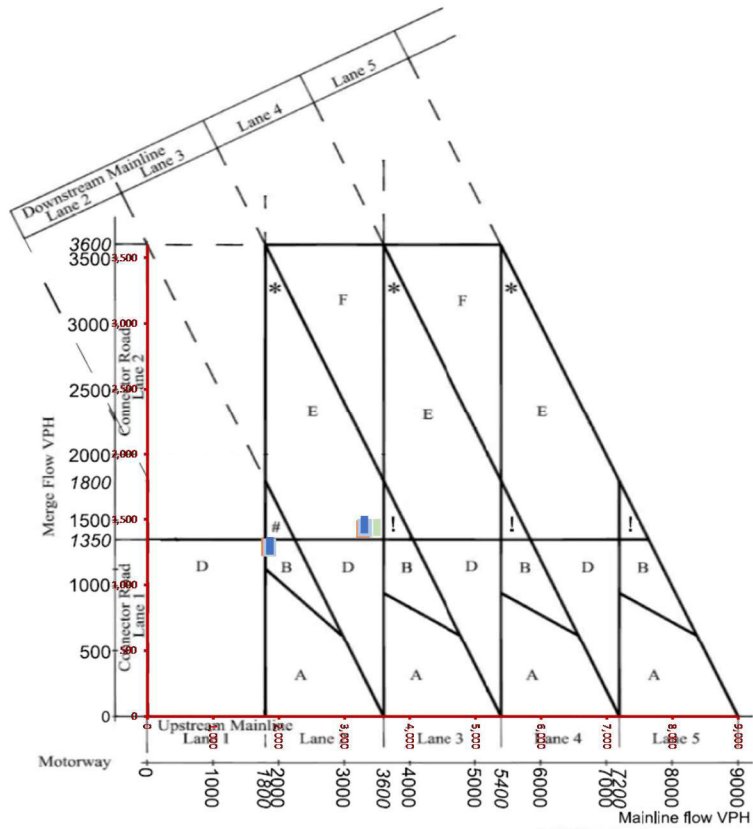
Scenario	Merge Layouts		Upstream Mainline Lanes	Downstream Mainline Lanes	Connector Road Lanes
	AM	PM			
Current Layout	A	A	3	3	2
Reference Case	A	D	3	2	2
Local Plan 1	A	D	3	2	2
Local Plan 2	A	D	3	2	2
Local Plan 3	A	D	3	2	2



0.5% 1.0% 1.5% 2.0% 2.5% 3.0% 3.5% 4.0%

Appendix M-12: M23 J11 Southbound Merge

M23 Junction 11 Southbound Merge

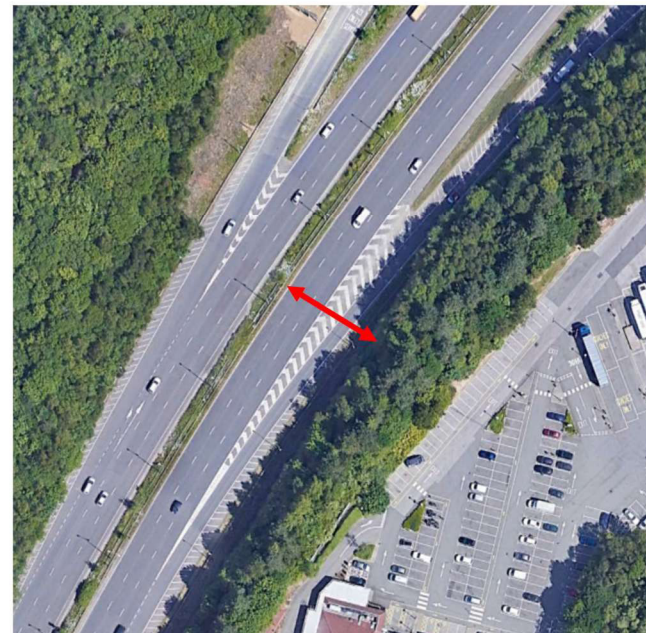


CD122 - Figure 3.12b Motorway merging diagram

Scenario	Upstream Mainline	Merge Flow
A	AM Reference	1,841
B	PM Reference	3,285
C	AM Local Plan 1	1,861
D	PM Local Plan 1	3,307
E	AM Local Plan 2	1,864
F	PM Local Plan 2	3,320
G	AM Local Plan 3	1,869
H	PM Local Plan 3	3,304
I		
J		

Output Summary

Scenario	Merge Layouts		Upstream Mainline Lanes	Downstream Mainline Lanes	Connector Road Lanes
	AM	PM			
Current Layout	A	A	3	3	1
Reference Case	B	E	2	3	2
Local Plan 1	B	E	2	3	2
Local Plan 2	B	E	2	3	2
Local Plan 3	B	E	2	3	2

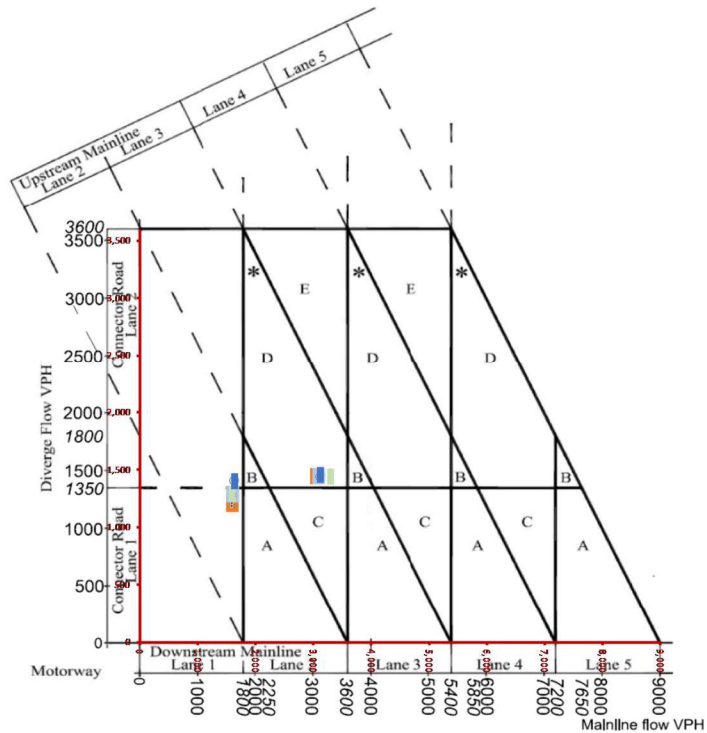


Need to drop lane in junction
Through junction needs to be two lanes

0% -4
1% 1.1
0% -5
1% 1.3
1% 1.2
1% 3.2

Appendix M-13: M23 J11 Northbound Diverge

M23 Junction 11 Northbound Diverge

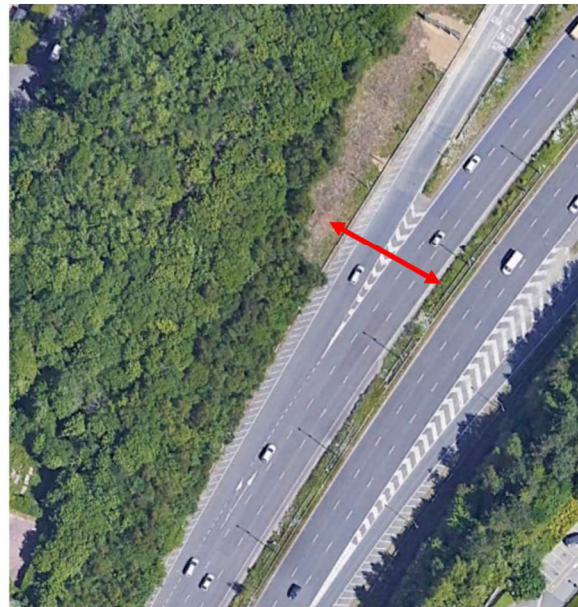


CD122 - Figure 3.26b Motorway diverging diagram

Scenario	Downstream Mainline	Diverge Flow
A AM Reference	3,052	1,446
B PM Reference	1,598	1,201
C AM Local Plan 1	3,089	1,443
D PM Local Plan 1	1,602	1,287
E AM Local Plan 2	3,119	1,442
F PM Local Plan 2	1,600	1,293
G AM Local Plan 3	3,126	1,453
H PM Local Plan 3	1,635	1,402
I		
J		

Output Summary

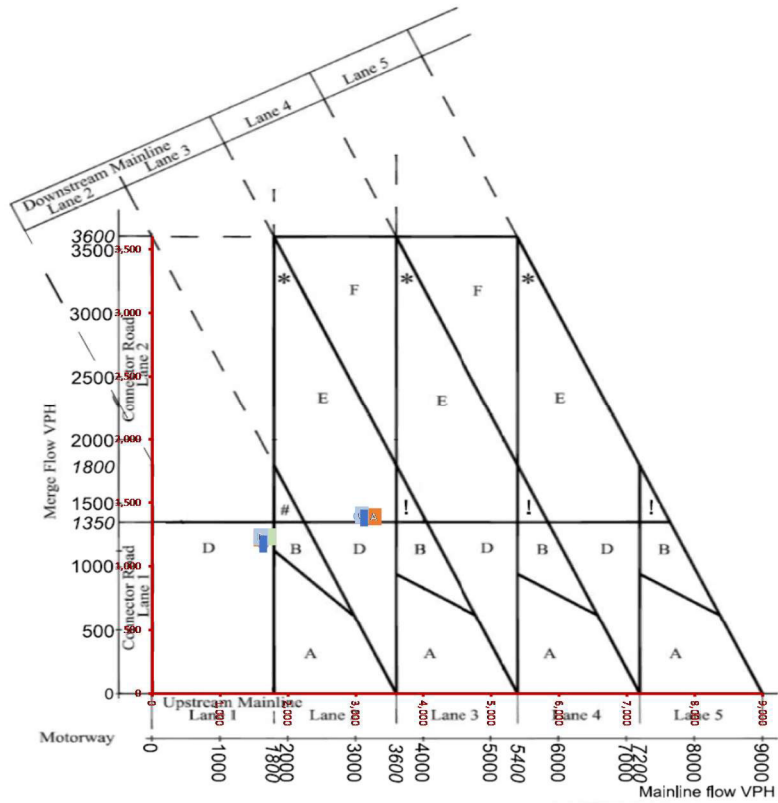
Scenario	Merge Layouts		Upstream Mainline Lanes	Downstream Mainline Lanes	Connector Road Lanes
	AM	PM			
Current Layout	B	B	3	3	2
Reference Case	D	C	3	3	2
Local Plan 1	D	C	3	3	2
Local Plan 2	D	C	3	3	2
Local Plan 3	D	C	3	3	2



7% 260
 0% 7
 12% 2071
 -100% 7
 -100% 2071

Appendix M-14: M23 J11 Northbound Merge

M23 Junction 11 Northbound Merge



CD122 - Figure 3.12b Motorway merging diagram

Scenario	Upstream Mainline	Merge Flow
A	AM Reference	3,052
B	PM Reference	1,598
C	AM Local Plan 1	3,089
D	PM Local Plan 1	1,602
E	AM Local Plan 2	3,119
F	PM Local Plan 2	1,600
G	AM Local Plan 3	3,126
H	PM Local Plan 3	1,635
I		
J		

Output Summary

Scenario	Merge Layouts		Upstream Mainline Lanes	Downstream Mainline Lanes	Connector Road Lanes
	AM	PM			
Current Layout	A	A	3	3	1
Reference Case	E	D	2	3	2
Local Plan 1	E	D	2	3	2
Local Plan 2	E	D	2	3	2
Local Plan 3	E	D	2	3	2



0% 35
-0.0% -0.02
-0.0% -0.09
-0.000% -0.02
-0.000% -0.09